

Assessment of Childhood and Adolescent Obesity in Arkansas

Year Five (Fall 2007–Spring 2008)



Table of Contents

Acknowledgements	1
Executive Summary	2
Overview of Changes to Act 1220 of 2003	4
BMI Data Collection	5
Process	
Definition of BMI	
Overview of BMI Reports	6
Child Health Reports	
School Reports	
School District Reports	
Statewide Report	
New for this Report	7
Student and School Participation in the BMI Initiative	7
Reasons Students Could Not be Assessed	9
Special Circumstances for Reporting	9
Statewide Results of the Arkansas BMI Assessments	10
BMI Classifications for all Students	
BMI Classifications by Gender	
BMI Classifications by Ethnic Group	
BMI Classifications by Gender and Ethnic Group	
BMI Classifications by Grade	
BMI Classifications by Gender and Grade	
BMI Classifications by Gender, Ethnic Group, and Grade	
School District Results	16
Conclusion	18
Appendices	
Appendix A: BMI Classifications by School (2007-2008)	19
Appendix B: BMI classifications by School District (2007-2008)	36
Appendix C: BMI Classifications by County (2007-2008)	43

List of Tables and Figures

Table 1: Statewide Participation in BMI Assessments	7
Map 1: Percentage of Students Assessed by Arkansas Public School District	8
Figure 1: Reasons Students Could Not be Assessed	9
Figure 2: Trends in BMI Classifications for Arkansas Public School Students	10
Figure 3: BMI Classifications by Gender	11
Figure 4: BMI Classifications by Ethnic Group	11
Figure 5: BMI Classifications by Gender and Ethnic Group	12
Figure 6: BMI Classifications by Grade	13
Figure 7: BMI Classifications by Gender and Grade	14
Figure 8: BMI Classifications by Gender, Ethnic Group, and Grade	15
Map 2: Percentage of Students Classified as Overweight or At Risk for Overweight	17

This report would not be possible without the participation of the Arkansas Department of Education, along with dedicated and hardworking school personnel—nurses, teachers, physical education instructors, principals, superintendents, clinicians and others—who recognize the importance of continuing this ground-breaking intervention against the childhood and adolescent obesity epidemic. Many thanks go out to these valuable partners in Arkansas’s fight against childhood obesity.

In addition, we gratefully acknowledge the Robert Wood Johnson Foundation and the Arkansas Department of Health for their support of the Arkansas Center for Health Improvement’s (ACHI) BMI data collection and analysis projects.

Final Statewide Report

The primary purpose for public school BMI assessment is to provide parents with results of this important health screen. In addition, collective BMI classification data can help individual schools and school districts monitor results of their efforts.

ACHI has analyzed BMI data to produce the fifth statewide report. We are dedicated to reducing childhood obesity in Arkansas and will continue to monitor BMI data. However, we intend to turn our resources to other types of analysis and therefore do not plan to produce a statewide assessment report next year. Although we will not publish a statewide report, school- and school district-level reports will continue to be available.



Suggested citation: Arkansas Center for Health Improvement, Year Five Assessment of Childhood and Adolescent Obesity in Arkansas (Fall 2207–Spring 2008), Little Rock, AR: ACHI, September 2008

Copyright © September 2008 by the Arkansas Center for Health Improvement. All rights reserved.

Results of the assessment of childhood and adolescent obesity in Arkansas show that we continue to hold the line on progression of this epidemic, as we have for the past five years. Is this good news? Yes, it is compared with the previous three decades of rapid increases in childhood obesity rates. However, once again we must report the bad news too—nearly 38 percent of our children are still overweight or at risk for overweight.

Statewide response to the childhood obesity epidemic in Arkansas began in 2003 when the General Assembly passed pioneering legislation known as Act 1220. Through this legislation, a coordinated statewide effort was put into place and a child health advisory committee was created representing health care professionals, educators, disease prevention organizations and parents. Together, they developed a uniquely comprehensive approach to combating childhood obesity. The evidence-based cornerstones of this program were focused primarily on the school environment and included:

- improved nutritional standards for meals served at school,
- increased physical activity,
- changes in access to and content of on-campus vending machines, and
- implementation of the school-based body mass index (BMI) health screening and report to parents.

For more information on Arkansas's childhood obesity efforts, the child health advisory committee, and links to related legislation, see www.achi.net/childob.asp.

To help gauge the effectiveness of efforts advanced through Act 1220, the Arkansas Center for Health Improvement (ACHI) has, now for the fifth year, provided an analysis of BMI data collected on a school, school district, and statewide basis. The results of the year five (2007–2008) analysis are included in this report.

During the first four years after Act 1220 of 2003 was passed (school years 2003–2004 through 2006–2007), BMI assessments were conducted each year for children in grades K–12. New legislation enacted during the 2007–2008 Arkansas General Assembly changed the periodicity of individual assessments to only include students in even-number grades (K, 2, 4, 6, 8 and 10). Data presented in this report represent BMI measurements for students in those grades only. For the purpose of meaningful comparisons, data for previous years includes only students in grades K, 2, 4, 6, 8 and 10. This encompasses BMI measurement data for more than 175,000 students annually. Because of the large number of students assessed, results by gender, ethnic groups, and grade are included in this report, which are not available from other national sources.

The childhood obesity epidemic cuts across all categories of ethnicity, age and gender, but some populations are at higher risk than others. Analysis of the year five BMI data shows that Hispanic students were more likely to be overweight or at risk for overweight compared with Whites, Asians, African Americans, or Native Americans. Among public school students in grades K, 2, 4, 6, 8 and 10, 47 percent of Hispanic students were classified as either overweight or at risk for overweight. Among African American students, 42 percent were in the two highest risk categories, as were 38 percent of Native Americans, 36 percent of White students, and 30 percent of Asian students.

There was minimal difference in weight classification between boys and girls. Slightly more males (39 percent) than females (37 percent) were identified as overweight or at risk for overweight. The difference was more pronounced when gender was combined with ethnicity. An analysis of BMI classifications by gender and ethnic group shows that overall, 50 percent of Hispanic males and 44 percent of African American females were in the two highest risk categories. At 24 percent, Asian females were the group with the lowest percentage classified as overweight or at risk for overweight.

Overall, 38 percent of public school students in grades K, 2, 4, 6, 8 and 10 were classified as overweight or at risk for overweight. These children face potential health consequences proven to be associated with

obesity. Risk factors associated with cardiovascular disease, including high blood pressure, high cholesterol, and Type 2 diabetes are much more likely to appear in overweight children and adolescents than in other children.¹

While there are still too many children in our state whose health is threatened by childhood obesity, progress has been made in Arkansas. The most recent Act 1220 evaluation, published by an investigative team at the Fay W. Boozman College of Public Health at the University of Arkansas for Medical Sciences, shows that there has been a significant increase in policies prohibiting the sale of “junk foods” in schools both through à la carte lines in cafeterias and vending machines. The evaluation reports that 63 percent of schools now have policies in place for à la carte items, 61 percent have policies regarding content of vending machines, and 68 percent of schools now require that students be offered low-fat alternatives to whole milk.

In addition, the evaluation indicates that parents and adolescents are generally comfortable with the BMI assessment and reporting process. And, increased parental awareness of obesity is suggested by the emergence in year four data of an increasing trend in the number of parents who are limiting “junk foods” at home and limiting screen time to encourage increased physical activity.

For more information on the Fay W. Boozman College of Public Health at the University of Arkansas for Medical Sciences’ evaluation of Arkansas Legislative Act 1220 on Childhood Obesity, visit www.uams.edu/coph/reports/#Obesity.

Initial efforts to reduce childhood obesity were primarily focused on schools because of the amount of time children spend there. Schools provide a uniquely level playing field where children have equal access to school meals, physical activity, and health screens. However, academic achievement mandates often stretch thin school resources causing competition for time and dollars. To increase academic instruction time, the Arkansas General Assembly passed legislation during the 2007–2008 session that reduced the physical activity requirements set forth as a result of Act 1220.

There is an increasing body of evidence showing a direct relationship between physical activity and fitness to improved ability to learn. According to a recent brief prepared by Active Living Research, a national program of the Robert Wood Johnson Foundation, “Students whose time in physical education or school-based physical activity was increased maintained or improved their grades and scores on standardized achievement tests, even though they received less classroom instructional time than students in control groups.”²

The *Dietary Guidelines for Americans* published by the U.S. Department of Health and Human Services and the U.S. Department of Agriculture, recommends that children and adolescents engage in 60 minutes of moderate intensity physical activity most days of the week, preferably daily.³

In addition to improving student ability to learn and succeed academically, development of life-long physical activity habits will result in a healthier, more productive future workforce.

We have made progress in Arkansas. Act 1220 raised awareness of the childhood obesity epidemic in our state. As a result, many school personnel have whole-heartedly and creatively undertaken efforts to improve school nutrition and incorporate routine physical activity as part of the school day. Parents are more engaged in making positive changes in the home environment.

Increased school, community, and policy-based efforts are required to ensure that all schools and parents are provided with the support they need to continue and to expand these important efforts.

¹ *Childhood Overweight*, Division of Nutrition, Physical Activity and Obesity, National Center for Chronic Disease Prevention and Health Promotion www.cdc.gov/nccdphp/dnpa/obesity/childhood/index.htm

² *Active Education, Physical Education, Physical Activity and Academic Performance*, Research Brief, Active Living Research, Fall 2007 www.activelivingresearch.org/files/Active_Ed.pdf

³ *Dietary Guidelines for Americans 2005*, U.S. Department of Health and Human Services www.health.gov/dietaryguidelines/dga2005/document/default.htm

Legislation was enacted during the 2007–2008 Arkansas General Assembly that changed some elements of Act 1220 of 2003.

Body Mass Index (BMI) Assessments

Act 1220 of 2003 required that BMI be assessed and reported to parents on an annual basis for all students.

Act 201 of 2007: An Act to change the periodicity of annual body mass index reporting to parents.

- Mandates that BMI assessments continue along with confidential Child Health Reports sent to parents.
- Limits how often BMI screening occurs for individual students to every two years starting in kindergarten and ending after the tenth grade. This parallels other school health screens, including vision and hearing, which are conducted with students in even-number grades.
- While parents have had the option of refusing BMI screening for their children, Act 201 requires that this option be exercised by written refusal provided to the school.
- Provides for “quality assurance” by requiring schools to follow a protocol that ensures privacy and uniformity in measurement.

Physical Activity

Child Health Advisory Committee (CHAC) recommendations resulting from Act 1220 and incorporated as law and administrative rule required a minimum of 150 minutes of physical activity each week for all public school students in grades K–12. This included a required 60 minutes of physical education classes for students in grades K–6, and could include non-mandatory physical education for those in grades 7–12. In addition, students in grades 9–12 were required to take one semester of physical education to comply with current

Standards of Accreditation.

Act 719 of 2007: An act to increase academic instruction time by limiting physical activity requirements.

- No substantive change for students in grades K–6.
- For students in public schools organized to teach grades 5 through 8, or any combination, 60 minutes of physical education training and instruction per week is required, with no additional requirement for physical activity.
- Students in grades 9 through 12 are required to complete one-half credit of physical education for high school graduation, with no additional requirement for physical activity.

Child Health Advisory Committee (CHAC)

The Child Health Advisory Committee was established by Act 1220 of 2003 to coordinate statewide efforts to combat childhood obesity and related illnesses. Responsibilities of the group include development of school nutrition and physical activity standards and policy recommendations.

Act 719 of 2007: Expands CHAC role for oversight of Coordinated School Health and inclusion of emphasis on obesity prevention.

- CHAC will make recommendations concerning the implementation of the Arkansas Coordinated School Health Program, including expansion beyond physical activity and nutritional standards.
- Five new members are added for a total of 25, including representation from:
 - Office of Minority Affairs at the Arkansas Department of Health
 - Arkansas School Boards Association
 - Arkansas Association of School Business Officials
 - Arkansas Association for Supervision and Curriculum Development
 - A classroom teacher

Aggregate child BMI assessments presented in this report are an excellent indication of the extent of the current problem of childhood and adolescent obesity in Arkansas schools, school districts, and the state. The data presented in this report serve as a warning about the potential future health problems that Arkansans may face as these children become adults.

Process

As required by Act 1220 of 2003, student BMI measurements are taken by a trained school or student-health professional. The measurement process is conducted privately, with the child facing away from the scale. Results are entered into a secure, web-based computer system capable of generating individual, confidential Child Health Reports for parents once data are entered. All students in even-number grades, kindergarten through 10th, are measured unless the parent provides the school with a written refusal, or the child is absent from school.

Definition of BMI

The BMI is a ratio of weight and height, and is a better assessment of obesity than weight alone. Using an accurate weight and height, BMI is calculated using the following formula:

$$\text{BMI} = \frac{\text{Weight in pounds}}{(\text{Height in inches})^2} \times 703$$

Boys and girls grow and develop at different rates. Based upon Centers for Disease Control and Prevention (CDC) recommendations, a BMI

percentile for children is calculated individually for each boy and girl based upon his or her gender, age, height, and weight. BMI percentiles are then used to categorize children according to whether they are underweight, healthy weight, at risk for overweight, or overweight. (CDC does not use the term "obese" when referring to children.)

A higher BMI indicates greater risk for having or developing obesity-related health problems. Health care professionals group BMI percentiles to categorize overweight children as follows.

Overweight: BMI-for-age greater than or equal to 95th percentile
At risk for overweight: BMI-for-age between 85th and less than 95th percentiles
Healthy weight: BMI-for-age between 5th and less than 85th percentiles
Underweight: BMI-for-age less than 5th percentile

A BMI assessment is only a screening tool and an individual child's BMI should not be considered a final indicator of whether or not a child has a weight problem that requires attention. Further evaluation by a health professional is the recommended next step for a child who is classified as at risk for overweight or overweight. However, BMI is the most widely accepted measurement used to screen for weight-related health problems. In a 2003 policy statement, the American Academy of Pediatrics recommended that every child every year have his or her BMI assessed. The Institute of Medicine in its 2005 report also recommended that schools conduct annual BMI assessments and make this information available to parents.

Child Health Reports

Confidential Child Health Reports were generated and were made available through schools for each student's parent or guardian. The reports explained why Arkansas assesses students' BMIs, described the BMI screening process, educated parents about potential obesity-related health risks facing their children, and provided simple suggestions to help families improve nutrition and increase physical activity. Depending on the students' information, the report included the student's height, weight, and BMI and a classification as underweight, healthy weight, at risk for overweight, overweight, or unable to assess. In addition, these five types of reports were translated into Spanish for those students whose records indicated that Spanish was the primary language spoken at home. Sample Child Health Reports are available on the ACHI website at www.achi.net.

School Reports

BMI profile reports are available on-line to each school once BMI data entry has been completed. These reports, which are also available on the ACHI website (www.achi.net) describe the extent to which the school is being affected by the obesity epidemic. BMI classifications for the school are presented for male and female students by grade and collectively for all students. BMI classification results for individual schools in Arkansas are presented in Appendix A.*

School District Reports

School district reports combine information from all available school data in that district. Summary statistics for each school within the district and overall results for the district provide a community assessment of the environmental impact of obesity on public school students.

Additional information, similar to that included in the school report, is depicted using both tables and charts. (School district reports are available at www.achi.net.) Results for BMI classifications of students in individual school districts in Arkansas are presented in Appendix B.*

Statewide Report

In this statewide report, results are presented for all students with a valid BMI. Additionally, results are presented by various demographic characteristics, including gender, ethnic group, and grade. Overall BMI classifications for students by county are shown in Appendix C.*

*Note: Appendices include data for students in grades K, 2, 4, 6, 8 and 10 only.

For the last four years, an investigative team at the Fay W. Boozman College of Public Health at the University of Arkansas for Medical Sciences (COPH) has published an evaluation of Act 1220 activities. The fourth-year report indicates that parents and adolescents are generally comfortable with the BMI assessment and reporting process. In addition, an increasing trend emerged in year 4 data indicating that parents are limiting "junk foods" at home and a significant increase in the number of parents limiting screen time to encourage increased physical activity.

(Year Four Evaluation: Arkansas Act 1220 of 2003 to Combat Childhood Obesity. Little Rock, AR: Fay W. Boozman College of Public Health, University of Arkansas for Medical Sciences, April 2008. Available at www.uams.edu/coph/reports.)

Data for this year’s report (2007–2008) comprise BMI measurements for children in even-number grades only—kindergarten through 10th grade. This is based upon the legislative change in assessment periodicity established by Act 201 of 2007 as described earlier in this report.

For the purpose of meaningful comparisons, previous year’s results include data for students in grades K, 2, 4, 6, 8 and 10 only.

Student and School Participation in the BMI Initiative

In the 2007–2008 school year, 99.2 percent (1,069 of 1,078) of Arkansas public schools, in 254 of 257 school districts, participated in the statewide BMI assessments. These totals include BMI assessments that were submitted by June 5, 2008 for 217,599 of the state’s 220,945 public school students enrolled in grades K, 2, 4, 6, 8 and 10. Among students for whom data was reported, 82 percent (178,181) had appropriate data to allow BMI calculation.

**Table 1: 2007–2008 Statewide Participation in BMI Assessments
(Students in Grades K, 2, 4, 6, 8 and 10 only)**

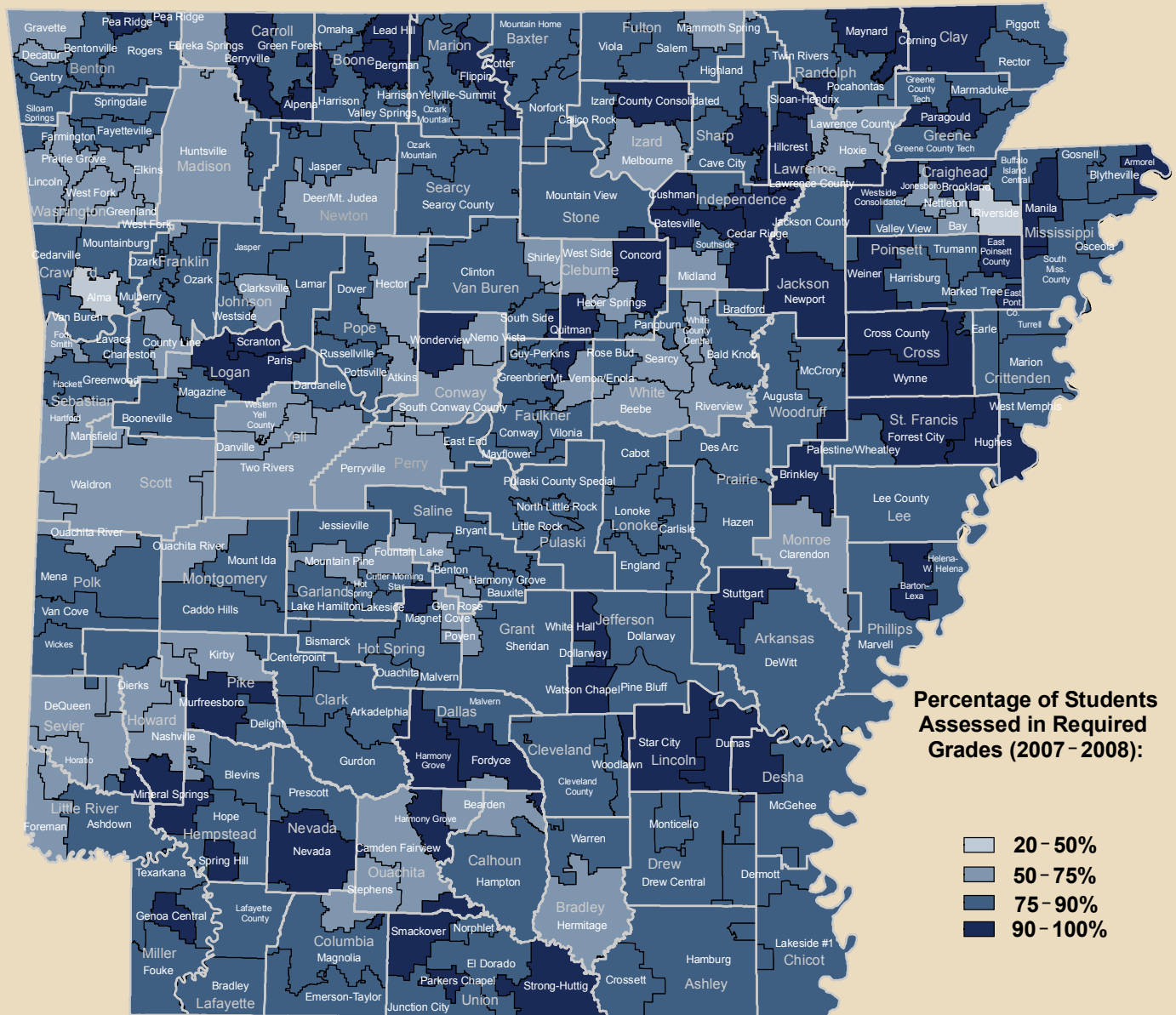
Participation	Year 1 ('03-'04) Percent Number/Total	Year 2 ('04-'05) Percent Number/Total	Year 3 ('05-'06) Percent Number/Total	Year 4 ('06-'07) Percent Number/Total	Year 5 ('07-'08) Percent Number/Total
Public schools	94.4% 1,056 of 1,118	98.7% 1,110 of 1,124	98.7% 1,082 of 1,096	99.2% 1,062 of 1,071	99.2% 1,069 of 1,078
Students in grades K, 2, 4, 6, 8, 10	92.8% 201,669 of 217,206	96.4% 209,563 of 217,460	92.7% 205,529 of 221,758	97.1% 223,214 of 229,815	98.5% 217,599 of 220,945

Student Data	Year 1 ('03-'04) Percent Number	Year 2 ('04-'05) Percent Number	Year 3 ('05-'06) Percent Number	Year 4 ('06-'07) Percent Number	Year 5 ('07-'08) Percent Number
Total students participating	201,669	209,563	205,529	223,214	217,599
Valid for analysis	83.7% 168,760	84.7% 177,504	87.1% 179,027	80.1% 178,904	81.9% 178,181
Invalid	1.2% 2,346	1.0% 2,171	0.3% 546	0.036% 80	0.038% 82
Unable to assess	15.1% 30,563	14.3% 29,888	12.6% 25,956	19.8% 44,230	18.0% 39,336

Results include all data available for years 1, 2, 3 and 4 for grades K, 2, 4, 6, 8 and 10, and year 5 data for the same grades received by June 5, 2008. The most common reason students were not assessed for BMI was absence from school. Reasons students could not be assessed are detailed in Figure 1. Fluctuation in the total number of public schools each year is due to school closings, new school openings and mergers. Only schools with students in even-number grades were included in this report.

Map 1: 2007–2008 Percentage of Students Assessed by Arkansas Public School District (Students in Grades K, 2, 4, 6, 8 and 10 only)

Student assessment rates varied from 34 percent to 99 percent of student enrollment in required grades. High participation rates allow confidence in the results reported by school and school districts. For those schools or school districts with low participation rates, under-reporting of select categories is possible.



Source: Arkansas Center for Health Improvement, the Department of Education, and the Census TIGER Lines Files.

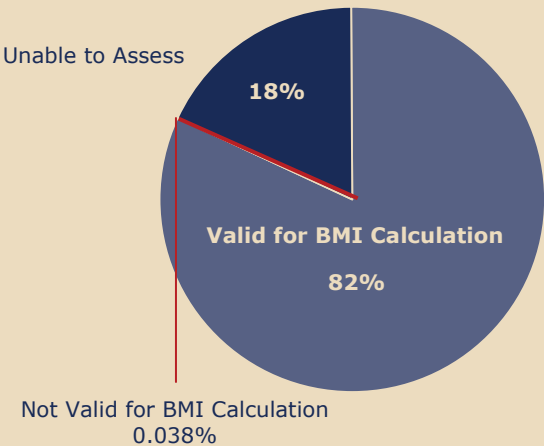
0 5 10 20 30
Miles

Notes: Results were reported for 254 of 257 Arkansas school districts. The non-participating districts were Northwest Arkansas Academy of Fine Arts, Imboden Charter, and Haas Hall Academy. The geographic area of these districts is too small to be shown on the map. Nine additional school districts are also not included on the map because of small geographic district size. The districts are Academics Plus, Arkansas School for the Blind, Arkansas School for the Deaf, Arkansas Virtual Academy, Benton Country School of Arts, Dreamland Academy, Hope Academy, Kipp Delta College Prep School, and Lisa Academy.

To complete the BMI assessments, schools collected each student’s name, address, grade, gender, ethnicity, and birth date along with his/her height and weight measurements.

Approximately one in six students (39,336) could not have their BMIs calculated, usually because they were absent on the day of assessment. Other reasons that students were classified as “unable to assess” include physical disability, students’ or parents’ refusal to participate, and inability to obtain accurate measurements. Less than one percent (82) of students who participated in the assessment process had “invalid” data, meaning that the information reported could not be used to calculate a BMI.

**Figure 1: 2007–2008 Reasons Students Could Not be Assessed
(Students in Grades K, 2, 4, 6, 8 and 10 only)**



Reasons Students Could Not Be Assessed	
Absent	7.36%
Not enrolled at school	3.44%
Parent refused	4.13%
Student refused	2.28%
Unable to obtain accurate measurement	0.001%
Other	0.57%
Physical Disability	0.24%
Pregnant	0.04%
Weight exceeded scale	0.02%

Special Circumstances for Reporting

The results section of this report includes state-wide BMI percentages of underweight, healthy weight, at risk for overweight, and overweight students for selected demographic subgroups. Percentages for these four classifications are also reported for the majority of districts and counties in the state (see Appendices).

However, to protect private health information (based on rules in the federal Health Insurance Portability and Accountability Act of 1996) and in compliance with common statistical reporting practices, if less than five students are in a

particular classification, then that group is either not reported or is combined with another group. For example, if fewer than five students are in the underweight category, this category is combined with the healthy weight group. Similarly, for some schools with less than five students in the overweight or at risk for overweight classifications, these two groups are combined.

Due to the large number of students assessed, results by gender, ethnic groups, and grade were included in this report that are not available from any other source in the nation.

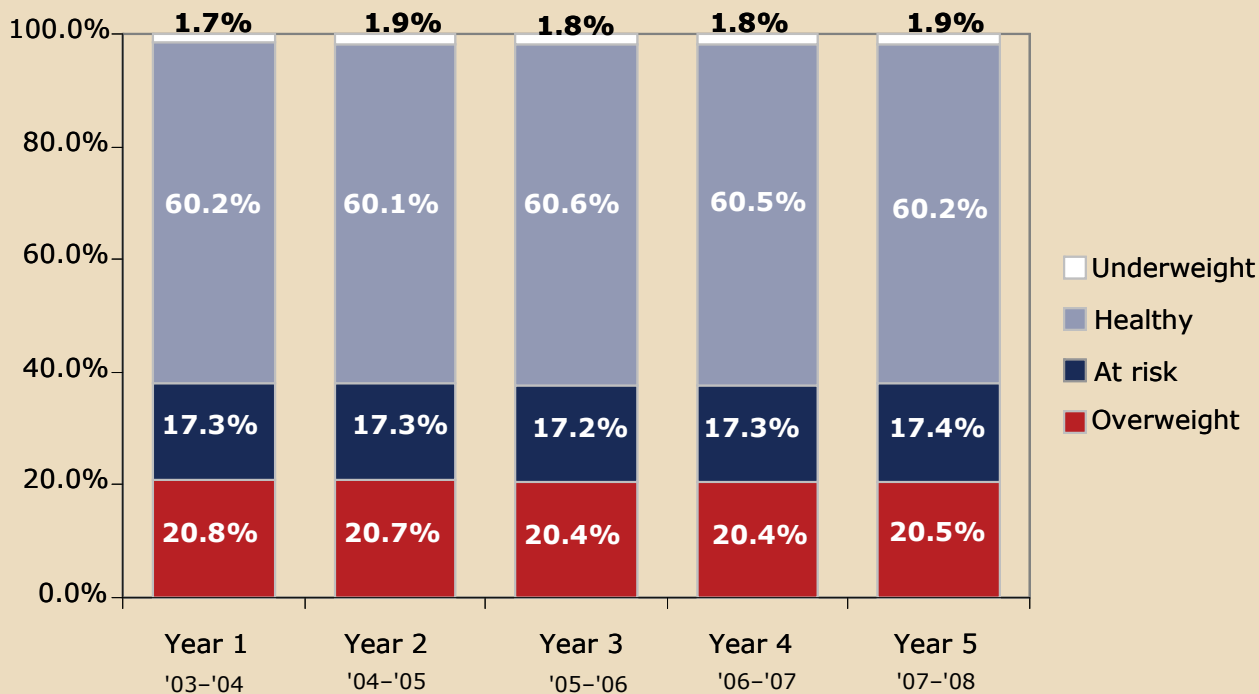
Statewide Results of the Arkansas BMI Assessments 10

The total public school enrollment in grades K, 2, 4, 6, 8 and 10 for the 2007–2008 school year, reported by the Arkansas Department of Education, was 220,945 students, enrolled in 1,078 schools within 257 school districts. Statewide results presented in this section of the report are based only on the data from 178,181 individual students (enrolled in grades K, 2, 4, 6, 8 or 10) with valid BMI assessments that were reported prior to June 5, 2008 by 1,069 schools in 254 school districts.

BMI Classifications for All Students

Data from 5 consecutive years of BMI screenings reveal that the percentage of students in each of the four classifications (underweight, healthy weight, at risk for overweight, and overweight) has remained level. Nearly 38 percent of Arkansas children and adolescents have a potential obesity problem and face health risks associated with being overweight.

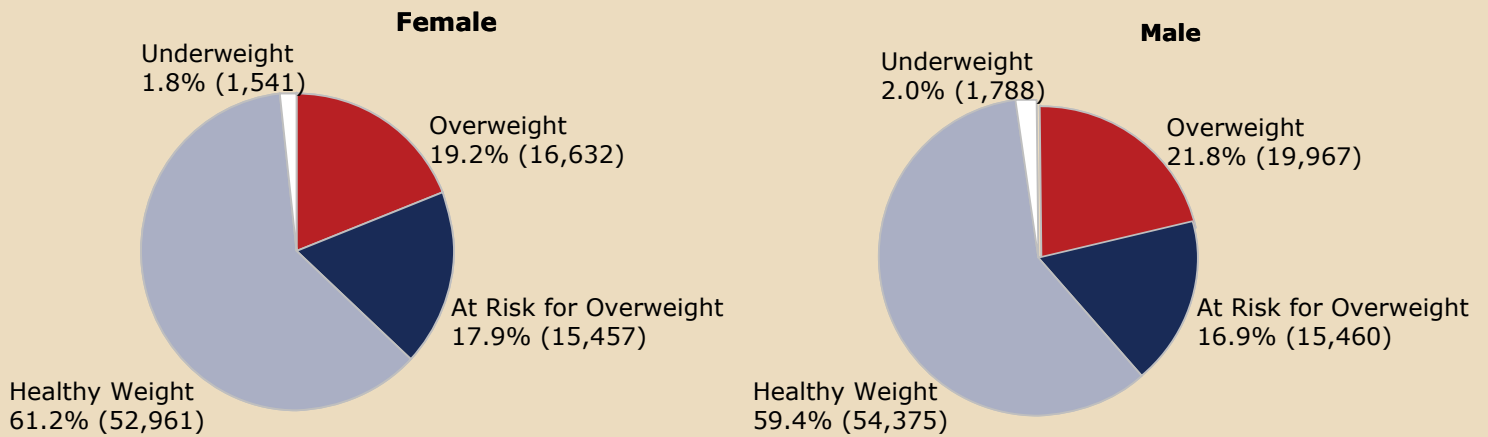
Figure 2: 2007–2008 Trends in BMI Classifications for Arkansas Public School Students (Students in Grades K, 2, 4, 6, 8 and 10 only)



Results presented include all data for specified grades for years 1, 2, 3 and 4 and data received by June 5, 2008 for year 5 analysis.

Slightly more males (22 percent) than females (19 percent) were classified as overweight. There was less difference in the at risk for overweight category, although at 18 percent, females ranked slightly above males at 17 percent. The percentage of underweight students was similar for both genders (2 percent).

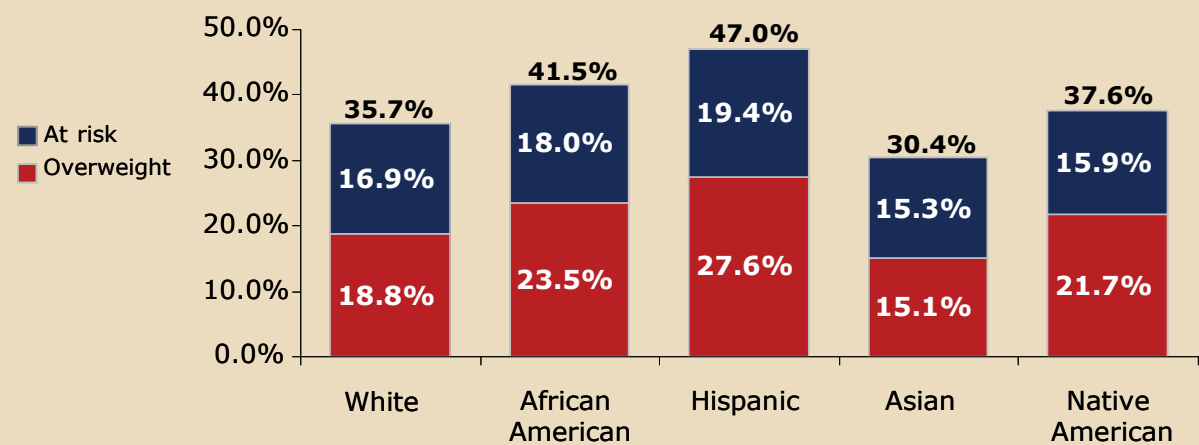
**Figure 3: 2007–2008 BMI Classifications by Gender
(Students in Grades K, 2, 4, 6, 8 and 10 only)**



BMI Classifications by Ethnic Group

With 47 percent of Hispanic students classified as either overweight or at risk for overweight, they had the highest obesity burden among students compared with Whites, African Americans, Asians, or Native Americans. Among African American students, 42 percent were in the two highest risk categories and 38 percent of Native American students were overweight or at risk for overweight, while 36 percent of White students and 30 percent of Asian students fell in that range. Whites had the highest percentage of students classified as underweight at 2 percent.

**Figure 4: 2007–2008 BMI Classifications by Ethnic Group
(Students in Grades K, 2, 4, 6, 8 and 10 only)**

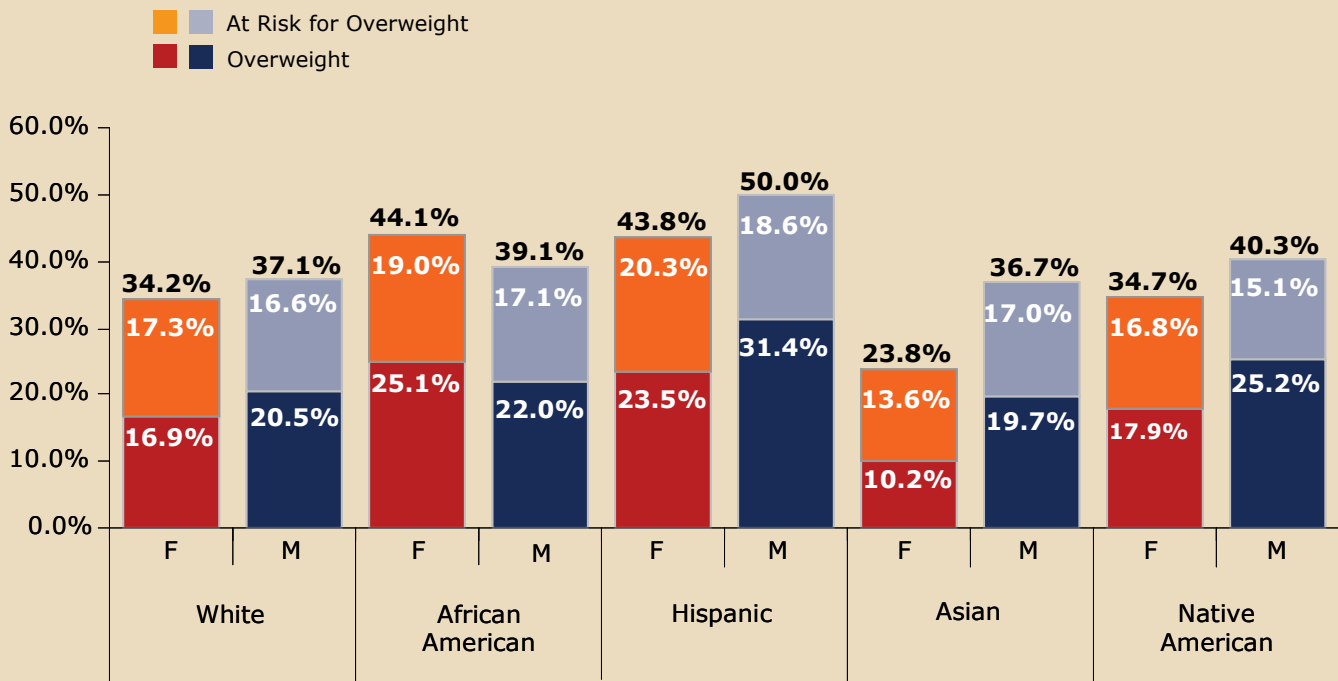


Hispanic males had the highest obesity risks when evaluating results by ethnic group and gender. Half (50 percent) of Hispanic males were classified as overweight or at risk for overweight. The obesity risk was slightly lower among African American and Native American males (40 percent) and among White and Asian males (37 percent).

Among Hispanic females and African American females, 44 percent of both groups were in the two highest risk categories, while 34 percent of White females and 24 percent of Asian females were overweight or at risk for overweight.

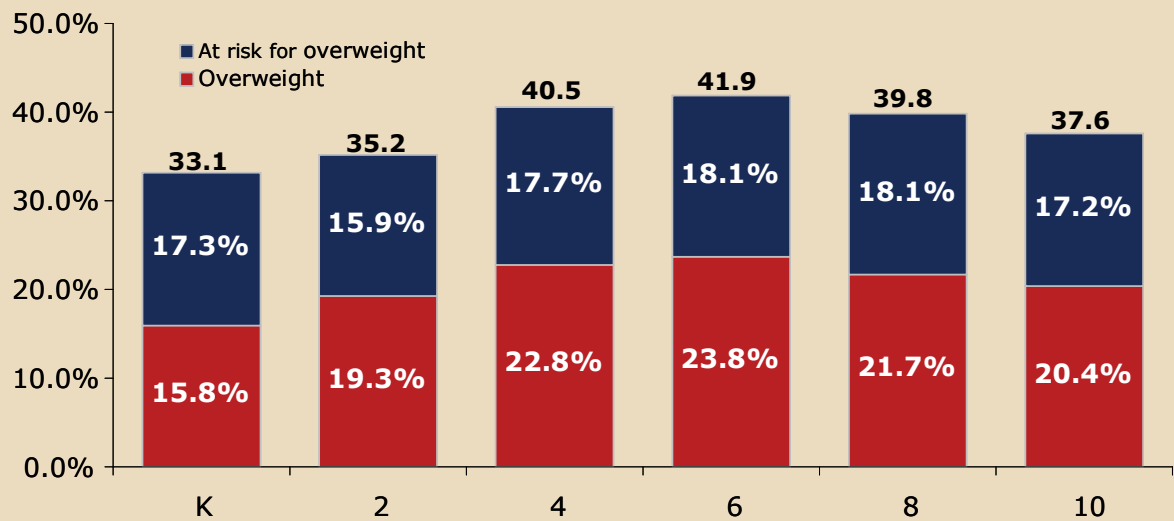
A higher percentage of males than females had BMI measurements in the two heaviest categories in all ethnic groups except African Americans. The greatest difference between males and females within an ethnic group was among Asian students where 24 percent of females were in the two heaviest categories compared to 37 percent of males.

Figure 5: 2007–2008 Percent of Students Classified as Overweight or At Risk for Overweight by Gender and Ethnic Group (Students in Grades K, 2, 4, 6, 8 and 10 only)



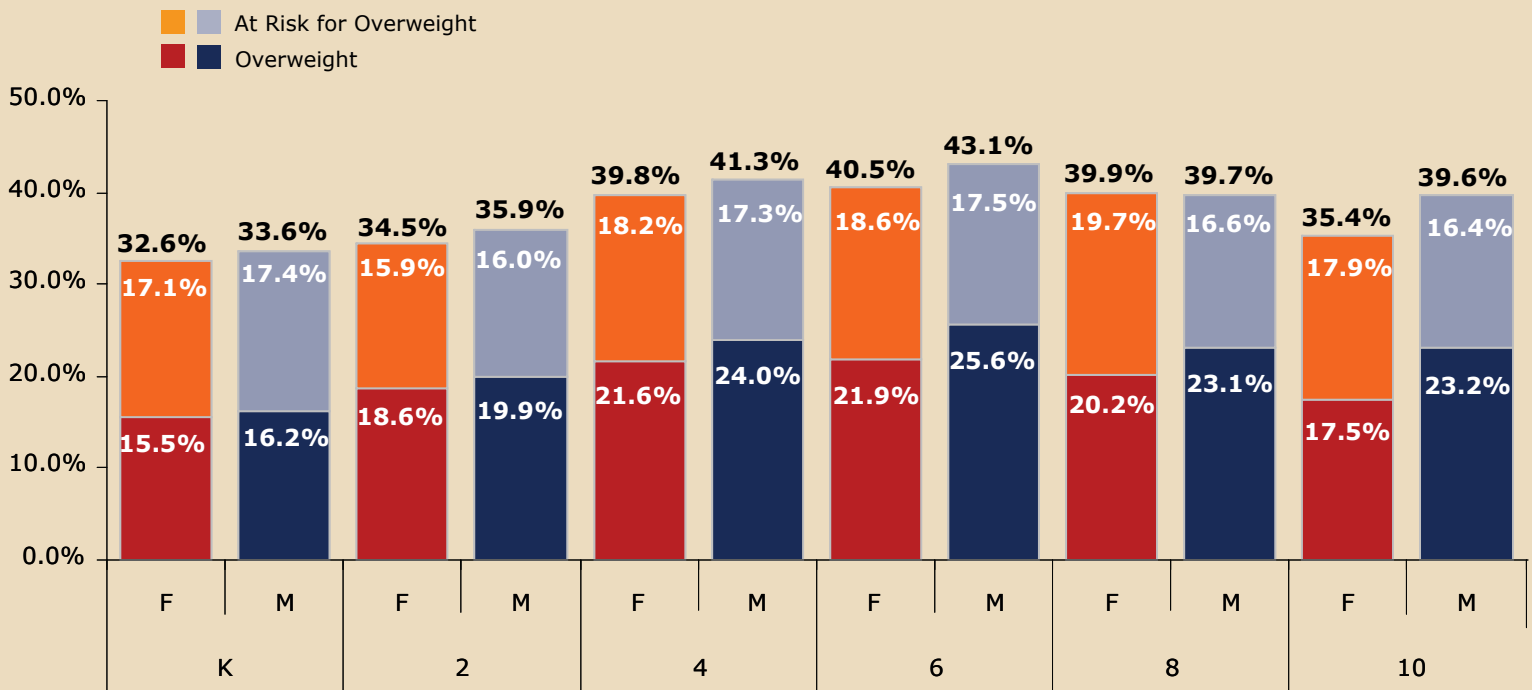
Data for grades K, 2, 4, 6, 8 and 10 show that 33 percent of kindergartners entered the school system either overweight or at risk for overweight. The percentage of students who were overweight or at risk for overweight increased to 35 percent for second-graders, to 41 percent for those in the fourth grade, peaking at 42 percent with the sixth grade class. The prevalence of obesity diminishes slightly in subsequent years, down to 40 percent for eighth-graders and then to 38 percent for those in the tenth grade.

Figure 6: 2007–2008 Percent of Students Classified as Overweight or At Risk for Overweight by Grade (Students in Grades K, 2, 4, 6, 8 and 10 only)



Across grades K, 2, 4, 6, 8 and 10, a greater percentage of males than females were classified as overweight. The difference was most pronounced in the tenth grade where nearly one-fourth of males (23 percent) were overweight compared with 18 percent of females. The highest prevalence of obesity for male students was found in the sixth grade where 43 percent were classified as overweight or at risk for overweight. For female students, the risk was highest in the fourth, sixth and eighth grades where approximately 40 percent of female students were classified in the two highest risk categories. This number dropped to 35 percent for females in the tenth grade.

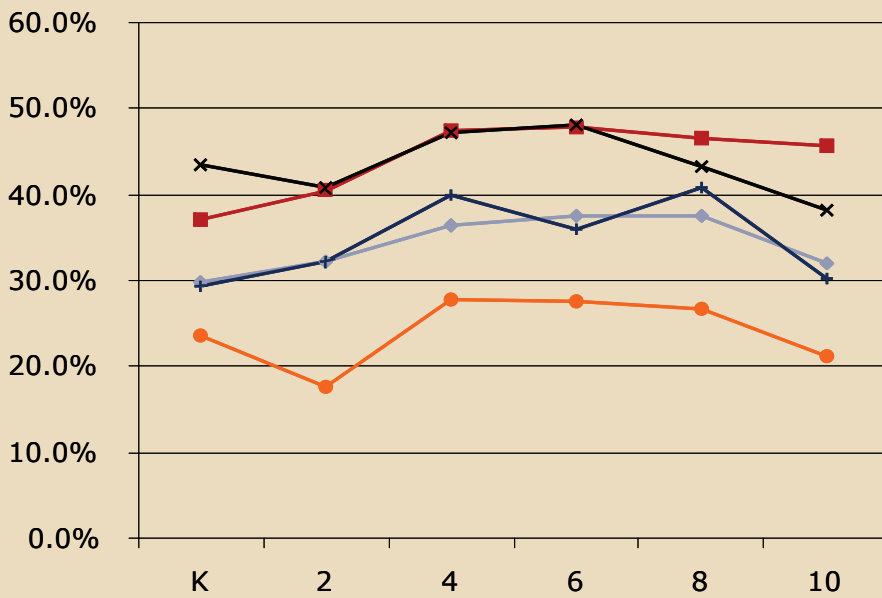
Figure 7: 2007–2008 Percent of Students Classified as Overweight or At Risk for Overweight by Gender and Grade (Students in Grades K, 2, 4, 6, 8 and 10 only)



Analysis of the BMI assessments shows that some groups of students face a heightened risk for childhood obesity. The highest obesity rates were found among Hispanic males, especially in the fourth grade where 55 percent were classified as overweight or at risk for overweight. For Hispanic and African American females, the highest rates were found in sixth grade where 48 percent of both groups were overweight or at risk for overweight. The lowest obesity rates were found among Asian females, as low as 18 percent in the second grade.

Figure 8: 2007–2008 Percent of Students Classified as Overweight or At Risk for Overweight by Gender, Ethnic Group, and Grade (Students in Grades K, 2, 4, 6, 8 and 10 only)

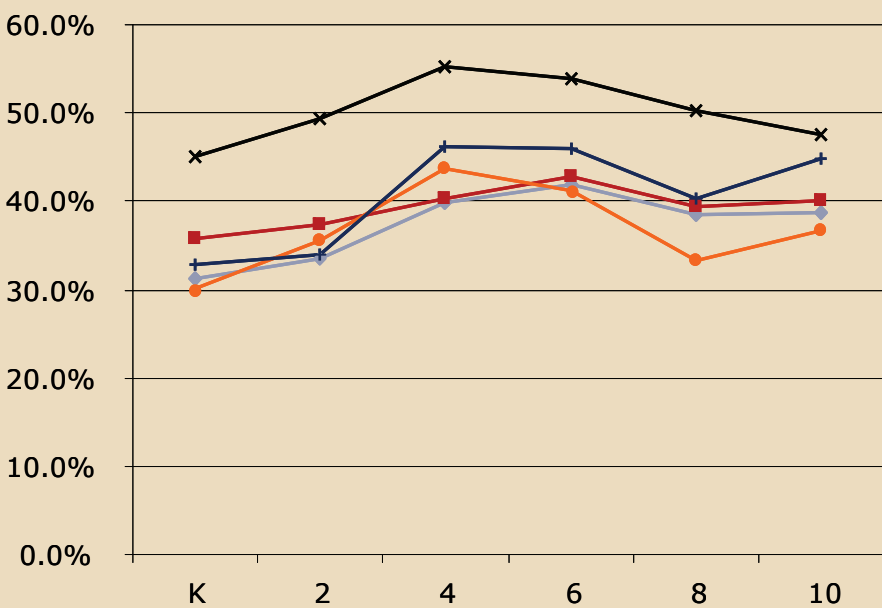
Female



◆ White
 ■ African American
 × Hispanic
 ● Asian
 + Native

	White	African Amer	Hispanic	Asian	Native Amer
K	29.7%	37.1%	43.4%	23.5%	29.3%
2	32.1%	40.3%	40.9%	17.7%	32.3%
4	36.3%	47.4%	47.1%	27.9%	40.0%
6	37.4%	47.9%	48.0%	27.5%	36.0%
8	37.4%	46.5%	43.2%	26.7%	40.7%
10	32.0%	45.7%	38.2%	21.1%	30.3%

Male



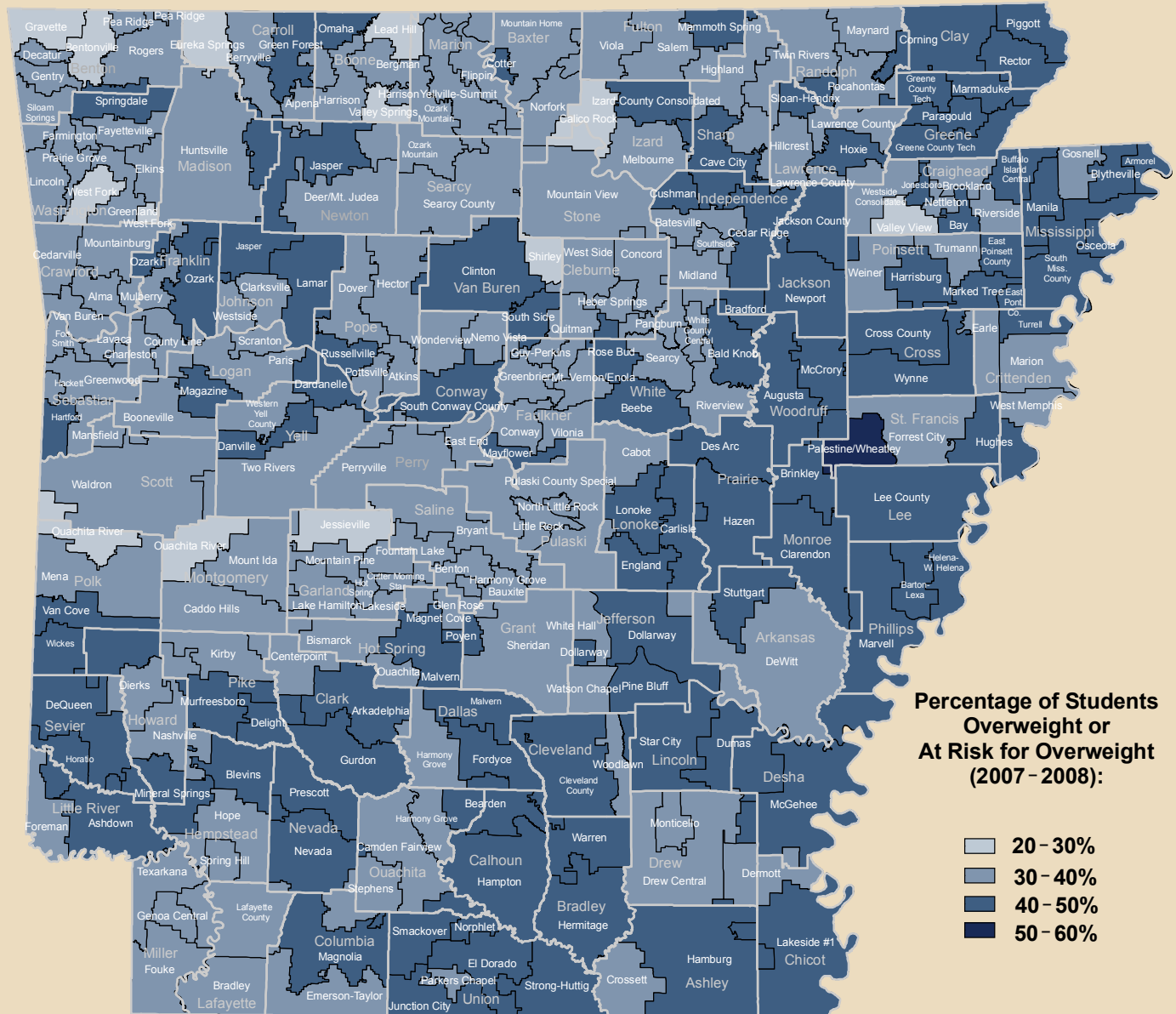
	White	African Amer	Hispanic	Asian	Native Amer
K	31.2%	35.7%	45.1%	30.2%	32.8%
2	33.5%	37.3%	49.3%	35.5%	33.9%
4	39.8%	40.2%	55.2%	43.7%	46.3%
6	41.8%	42.9%	53.8%	41.3%	46.0%
8	38.5%	39.3%	50.3%	33.2%	40.4%
10	38.8%	40.0%	47.6%	36.7%	44.9%

Childhood and adolescent obesity is a problem in every county in Arkansas. Among 257 school districts in the state, 254 had reported data by June 5, 2008. The percentage of students within a school district who were overweight or at risk for overweight is shown in the map (Map 2). The map is shaded according to the magnitude of the percentage. The lightest shade represents the districts with the lowest percentage (20-30 percent) and the darkest shade represents those with the highest percentage (50-60 percent) of students classified as overweight or at risk for overweight. As noted on Map 2, of 13 school districts that fall within the lowest range for percentage of students classified as overweight or at risk for overweight, three schools submitted BMI assessments for less than two-thirds of its students. Therefore, the map may not reflect accurate results for some of these school districts. (See Map 1 which shows the student participation in BMI assessments by school district.)

Among the districts reporting results, 13 school districts had 20 to 30 percent of their students classified as overweight or at risk for overweight, 138 school districts had rates of 30 to 40 percent, 101 school districts had rates of 40 to 50 percent, and 2 school districts had 50 percent or more of their students in the two highest risk categories. (Note that 12 districts including those with special school classifications are not displayed on the map because of their small geographic size.)



Map 2: 2007–2008 Percentage of Students Classified as Overweight or At Risk for Overweight by Arkansas Public School District (Students in Grades K, 2, 4, 6, 8 and 10 only)



Source: Arkansas Center for Health Improvement, the Department of Education, and the Census TIGER Lines Files.

0 5 10 20 30
Miles

Notes: Results are reported for 254 of 257 Arkansas school districts. Of the 13 school districts that fall within the lowest range of percentage of students classified as overweight or at risk for overweight, Eureka Springs, Shirley and Gravette submitted BMI assessments for less than two-thirds of students in the required grades. Therefore, the map may not reflect accurate results for some of these school districts. Data were not reported for Northwest Arkansas Academy of Fine Arts, Imboden Charter School District, and Haas Hall Academy. These school districts are not included in the map because of small geographic size. Nine additional districts are also not shown on the map because of small geographic size. They are Academics Plus School District, Arkansas School for the Blind, Arkansas School for the Deaf, Arkansas Virtual Academy, Benton County School of Arts, Dreamland Academy, Hope Academy, Kipp Delta College Prep School, and Lisa Academy.

Reversing the Childhood Obesity Epidemic Will Require Purposeful Intervention from All Segments of Our Society

Arkansas currently bears a multi-billion dollar economic burden from increased medical expenses and lost productivity caused by preventable chronic diseases brought on by obesity and lack of physical activity.¹

The Arkansas experience shows that a comprehensive and collaborative effort by legislators, state health officials, educators, clinicians, parents, and community members can make a meaningful difference in childhood obesity prevention efforts. It also highlights the value of BMI reporting as part of a statewide program to promote awareness of the obesity crisis, the related health problems, and the importance of nutrition and physical activity. ACHI hopes these conclusions will inform future policy efforts in Arkansas and throughout the nation.

While halting the rise of childhood and adolescent obesity is a tremendous achievement, reversing the epidemic will require the purposeful intervention of all segments of our society. ACHI hopes to continue to track progress in ways that will help Arkansas and states across the nation refine their efforts to reverse the epidemic and improve the health of our children and families.

¹ *An Unhealthy America: the Economic Burden of Chronic Disease*, Milken Institute, October 2007, www.milkeninstitute.org



Appendix A: BMI Classifications by School (2007–2008)

School District	District LEA	School	School LEA	Under weight	Healthy Weight	At Risk for Over weight	Over weight	At Risk for Over weight or Over weight
Academics Plus School District	6040700	Academics Plus	6040702	5.88%	60.29%	17.65%	16.18%	33.83%
Academics Plus School District	6040700	Academics Plus	6040703	62.16%		13.51%	24.32%	37.83%
Alma School District	1701000	Alma High School	1701002	64.71%		19.85%	15.44%	35.29%
Alma School District	1701000	Alma Intermediate School	1701001	5.41%	69.19%	13.51%	11.89%	25.40%
Alma School District	1701000	Alma Primary School	1701004	2.80%	66.67%	14.85%	15.69%	30.54%
Alpena School District	0501000	Alpena Elementary School	0501001	4.00%	56.00%	19.33%	20.67%	40.00%
Alpena School District	0501000	Alpena High School	0501002	63.51%		16.22%	20.27%	36.49%
Ark School for the Blind	6091000	Ark School for the Blind Elem	6091001	52.94%		47.06%		47.06%
Ark School for the Blind	6091000	Ark School for the Blind HS	6091002	66.67%		33.33%		33.33%
Ark School for the Deaf	6092000	Ark School for the Deaf Elem	6092001	58.82%		11.76%	29.41%	41.17%
Ark School for the Deaf	6092000	Ark School for the Deaf HS	6092002	53.84%		46.15%		46.15%
Arkadelphia School District	1002000	Arkadelphia High School	1002010	66.43%		13.57%	20.00%	33.57%
Arkadelphia School District	1002000	Central Primary School	1002006	55.48%		16.77%	27.74%	44.51%
Arkadelphia School District	1002000	Goza Middle School	1002009	1.68%	54.21%	17.51%	26.60%	44.11%
Arkadelphia School District	1002000	Louisa Perritt Primary	1002007	11.02%	54.33%	20.47%	14.17%	34.64%
Arkadelphia School District	1002000	Peake Elementary School	1002008	50.69%		23.61%	25.69%	49.30%
Arkansas Virtual Academy	6043700	Arkansas Virtual Academy	6043701	75.33%		9.09%	15.58%	24.67%
Arkansas Virtual Academy	6043700	Arkansas Virtual Academy Jr	6043702	55.00%		45.00%		45.00%
Armored School District	4701000	Armored Elementary School	4701001	51.94%		20.16%	27.91%	48.07%
Armored School District	4701000	Armored High School	4701002	73.68%		14.04%	12.28%	26.32%
Ashdown School District	4101000	Ashdown High School	4101004	60.00%		20.00%	20.00%	40.00%
Ashdown School District	4101000	Ashdown Junior High School	4101003	56.60%		16.60%	26.79%	43.39%
Ashdown School District	4101000	C D Franks Elementary School	4101002	50.52%		21.65%	27.84%	49.49%
Ashdown School District	4101000	LF Henderson Interm School	4101001	47.22%		14.81%	37.96%	52.77%
Ashdown School District	4101000	Margaret Daniels Primary	4101005	60.00%		20.91%	19.09%	40.00%
Atkins School District	5801000	Atkins Elementary School	5801001	64.08%		15.57%	20.36%	35.93%
Atkins School District	5801000	Atkins High School	5801002	68.29%		19.51%	12.20%	31.71%
Atkins School District	5801000	Atkins Middle School	5801003	67.09%		16.46%	16.46%	32.92%
Augusta School District	7401000	Augusta Elementary School	7401001	56.49%		18.18%	25.32%	43.50%
Augusta School District	7401000	Augusta High School	7401003	60.52%		21.05%	18.42%	39.47%
Augusta School District	7401000	Cotton Plant Elementary School	7401007	50.00%		18.75%	31.25%	50.00%
Bald Knob School District	7301000	Bald Knob High School	7301003	55.30%		18.82%	25.88%	44.70%
Bald Knob School District	7301000	Bald Knob Middle School	7301004	52.78%		15.00%	32.22%	47.22%
Bald Knob School District	7301000	H L Lubker Elementary School	7301001	52.16%		23.38%	24.46%	47.84%
Barton-Lexa School District	5401000	Barton Elementary School	5401002	57.08%		18.75%	24.17%	42.92%
Barton-Lexa School District	5401000	Barton High School	5401003	50.84%		17.80%	31.36%	49.16%
Batesville School District	3201000	Batesville 6th Grade School	3201008	61.49%		16.22%	22.30%	38.52%
Batesville School District	3201000	Batesville High School	3201005	67.62%		10.23%	22.16%	32.39%
Batesville School District	3201000	Batesville Junior High School	3201004	59.48%		17.37%	23.16%	40.53%
Batesville School District	3201000	Central Elementary School	3201001	48.89%		22.22%	28.89%	51.11%
Batesville School District	3201000	Eagle Mountain Elem School	3201009	61.11%		18.25%	20.63%	38.88%
Batesville School District	3201000	Kindergarten Center	3201002	2.86%	66.29%	20.00%	10.86%	30.86%
Batesville School District	3201000	Sulphur Rock Elementary	3201042	60.28%		16.31%	23.40%	39.71%
Batesville School District	3201000	West Elementary School	3201003	63.94%		10.66%	25.41%	36.07%
Bauxite School District	6301000	Bauxite High School	6301002	55.31%		21.79%	22.91%	44.70%
Bauxite School District	6301000	Pine Haven Elementary School	6301001	1.58%	63.92%	17.72%	16.77%	34.49%
Bay School District	1601000	Bay Elementary School	1601001	56.61%		26.42%	16.98%	43.40%
Bay School District	1601000	Bay High School	1601002	63.27%		20.41%	16.33%	36.74%
Bearden School District	5201000	Bearden Elementary School	5201001	53.85%		22.22%	23.93%	46.15%
Bearden School District	5201000	Bearden Middle School	5201005	47.83%		17.39%	34.78%	52.17%
Beebe School District	7302000	Beebe Elementary School	7302008	1.68%	58.17%	20.91%	19.23%	40.14%
Beebe School District	7302000	Beebe High School	7302010	59.84%		24.41%	15.75%	40.16%
Beebe School District	7302000	Beebe Intermediate	7302013	59.28%		18.56%	22.16%	40.72%
Beebe School District	7302000	Beebe Junior High School	7302009	61.59%		15.94%	22.46%	38.40%
Beebe School District	7302000	Beebe Middle School	7302011	4.93%	53.69%	18.23%	23.15%	41.38%
Benton County School of Arts	0440700	Benton County School of Arts	0440701	73.70%		15.52%	10.78%	26.30%
Benton School District	6302000	Angie Grant Elementary School	6302007	55.96%		21.40%	22.63%	44.03%
Benton School District	6302000	Benton High School	6302012	62.77%		15.38%	21.85%	37.23%
Benton School District	6302000	Benton Junior High School	6302010	61.37%		18.38%	20.25%	38.63%
Benton School District	6302000	Benton Middle School	6302011	2.55%	57.96%	15.92%	23.57%	39.49%

School District	District LEA	School	School LEA	Under weight	Healthy Weight	At Risk for Over weight	Over weight	At Risk for Over weight or Over weight
Benton School District	6302000	Caldwell Elementary School	6302006	63.76%		17.89%	18.35%	36.24%
Benton School District	6302000	Perrin Elementary School	6302008	2.84%	62.06%	17.02%	18.09%	35.11%
Benton School District	6302000	Ringgold Elementary School	6302009	70.30%		12.13%	17.57%	29.70%
Bentonville School District	0401000	Apple Glen Elementary School	0401007	4.97%	66.08%	14.33%	14.62%	28.95%
Bentonville School District	0401000	Bentonville High School	0401003	1.42%	67.93%	14.69%	15.96%	30.65%
Bentonville School District	0401000	Centerton Gamble Elementary	0401014	1.69%	74.66%	14.19%	9.46%	23.65%
Bentonville School District	0401000	Central Park at Morning Star	0401012	2.54%	70.99%	18.07%	8.40%	26.47%
Bentonville School District	0401000	Cooper Elementary School	0401015	5.11%	71.49%	11.49%	11.91%	23.40%
Bentonville School District	0401000	Elm Tree Elementary School	0401009	3.28%	70.45%	15.52%	10.75%	26.27%
Bentonville School District	0401000	Lincoln Junior High School	0401010	3.24%	67.96%	15.86%	12.94%	28.80%
Bentonville School District	0401000	Mary Mae Jones Elem School	0401011	2.33%	69.00%	14.00%	14.67%	28.67%
Bentonville School District	0401000	Old High Middle School	0401005	2.59%	61.64%	18.53%	17.24%	35.77%
Bentonville School District	0401000	R E Baker Elementary School	0401004	76.36%		17.05%	6.59%	23.64%
Bentonville School District	0401000	Ruth Barker Middle School	0401013	3.72%	63.18%	14.53%	18.58%	33.11%
Bentonville School District	0401000	Spring Hill Middle School	0401008	2.40%	67.79%	14.90%	14.90%	29.80%
Bentonville School District	0401000	Sugar Creek Elementary School	0401006	73.69%		16.32%	10.00%	26.32%
Bentonville School District	0401000	Thomas Jefferson Elem School	0401001	80.75%		12.68%	6.57%	19.25%
Bentonville School District	0401000	Washington Junior High School	0401002	4.21%	70.79%	16.34%	8.66%	25.00%
Bergman School District	0502000	Bergman Elementary School	0502006	62.39%		22.12%	15.49%	37.61%
Bergman School District	0502000	Bergman High School	0502007	63.75%		16.25%	20.00%	36.25%
Bergman School District	0502000	Bergman Middle School	0502008	62.25%		15.89%	21.85%	37.74%
Berryville School District	0801000	Berryville Elementary School	0801001	2.29%	58.72%	16.28%	22.71%	38.99%
Berryville School District	0801000	Berryville High School	0801002	66.43%		12.14%	21.43%	33.57%
Berryville School District	0801000	Berryville Middle School	0801003	1.87%	59.55%	16.48%	22.10%	38.58%
Bismarck School District	3001000	Bismarck Elementary School	3001001	66.99%		16.02%	16.99%	33.01%
Bismarck School District	3001000	Bismarck High School	3001003	75.00%		11.54%	13.46%	25.00%
Bismarck School District	3001000	Bismarck Middle School	3001002	53.90%		26.56%	19.53%	46.09%
Blevins School District	2901000	Blevins Elementary School	2901001	4.50%	60.36%	14.41%	20.72%	35.13%
Blevins School District	2901000	Blevins High School	2901002	58.06%		14.52%	27.42%	41.94%
Blevins School District	2901000	Emmet Elementary School	2901013	48.48%		16.67%	34.85%	51.52%
Blevins School District	2901000	Emmet High School	2901014	65.71%		34.28%		34.28%
Blytheville School District	4702000	Blytheville Charter School & Alc	4702703	33.33%		66.67%		66.67%
Blytheville School District	4702000	Blytheville High School	4702013	53.08%		10.77%	36.15%	46.92%
Blytheville School District	4702000	Blytheville Intermediate Sch	4702011	2.84%	53.55%	17.06%	26.54%	43.60%
Blytheville School District	4702000	Blytheville Kindergarten Ctr	4702007	53.66%		23.58%	22.76%	46.34%
Blytheville School District	4702000	Blytheville Middle School	4702012	60.00%		16.57%	23.43%	40.00%
Blytheville School District	4702000	Blytheville Primary School	4702008	61.07%		13.52%	25.41%	38.93%
Blytheville School District	4702000	Central Elementary School	4702006	52.15%		17.70%	30.14%	47.84%
Booneville School District	4201000	Booneville Elementary School	4201001	3.94%	59.16%	15.78%	21.11%	36.89%
Booneville School District	4201000	Booneville High School	4201002	71.18%		15.25%	13.56%	28.81%
Booneville School District	4201000	Booneville Jr High School	4201003	70.59%		29.41%		29.41%
Bradford School District	7303000	Bradford Elementary School	7303014	50.67%		21.62%	27.70%	49.32%
Bradford School District	7303000	Bradford High School	7303015	62.30%		14.75%	22.95%	37.70%
Bradley School District	3701000	Bradley Elementary School	3701001	66.67%		14.81%	18.52%	33.33%
Bradley School District	3701000	Bradley High School	3701002	64.71%		11.76%	23.53%	35.29%
Brinkley School District	4801000	Brinkley High School	4801003	65.79%		13.16%	21.05%	34.21%
Brinkley School District	4801000	Brinkley Middle School	4801004	46.16%		20.77%	33.08%	53.85%
Brinkley School District	4801000	C B Partee Elementary School	4801001	50.95%		24.20%	24.84%	49.04%
Brookland School District	1603000	Brookland Elementary School	1603006	63.74%		15.86%	20.40%	36.26%
Brookland School District	1603000	Brookland High School	1603007	63.71%		14.16%	22.12%	36.28%
Brookland School District	1603000	Brookland Middle School	1603009	57.56%		20.98%	21.46%	42.44%
Bryant School District	6303000	Bethel Middle School	6303028	1.56%	58.89%	17.56%	22.00%	39.56%
Bryant School District	6303000	Bryant Elementary School	6303020	1.86%	71.01%	12.77%	14.36%	27.13%
Bryant School District	6303000	Bryant High School	6303022	2.12%	67.27%	13.03%	17.58%	30.61%
Bryant School District	6303000	Bryant Middle School	6303026	1.22%	61.66%	17.44%	19.68%	37.12%
Bryant School District	6303000	Collegeville Elementary School	6303027	4.48%	69.06%	13.90%	12.56%	26.46%
Bryant School District	6303000	Hurricane Creek Elementary	6303029	3.47%	66.80%	18.53%	11.20%	29.73%
Bryant School District	6303000	Paron Elementary School	6303036	62.79%		18.60%	18.60%	37.20%
Bryant School District	6303000	Robert L Davis Elem School	6303024	65.17%		18.91%	15.92%	34.83%
Bryant School District	6303000	Salem Elementary School	6303023	63.84%		15.62%	20.54%	36.16%
Bryant School District	6303000	Springhill Elementary School	6303025	2.33%	66.05%	17.21%	14.42%	31.63%
Buffalo Isl Central Sch Dist	1605000	Buffalo Isl Central East Elem	1605061	56.00%		16.80%	27.20%	44.00%
Buffalo Isl Central Sch Dist	1605000	Buffalo Island Central HS	1605063	72.22%			27.78%	27.78%
Buffalo Isl Central Sch Dist	1605000	Buffalo Island Central Jr HS	1605062	57.75%		16.90%	25.35%	42.25%
Buffalo Isl Central Sch Dist	1605000	Buffalo Island Central W Elem	1605060	54.70%		16.24%	29.06%	45.30%

School District	District LEA	School	School LEA	Under weight	Healthy Weight	At Risk for Over weight	Over weight	At Risk for Over weight or Over weight
Cabot School District	4304000	Academic Center for Excellence	4304703	59.10%		40.91%		40.91%
Cabot School District	4304000	Cabot High School	4304005	1.63%	63.01%	18.70%	16.67%	35.37%
Cabot School District	4304000	Cabot Junior High North	4304011	1.69%	61.02%	16.10%	21.19%	37.29%
Cabot School District	4304000	Cabot Junior High South	4304004	2.31%	62.31%	18.46%	16.92%	35.38%
Cabot School District	4304000	Cabot Middle School North	4304012	2.99%	61.13%	17.61%	18.27%	35.88%
Cabot School District	4304000	Cabot Middle School South	4304010		63.81%	18.73%	17.46%	36.19%
Cabot School District	4304000	Central Elementary School	4304002		67.96%	13.11%	18.93%	32.04%
Cabot School District	4304000	Eastside Elementary School	4304001	3.41%	71.97%	14.77%	9.85%	24.62%
Cabot School District	4304000	Magness Creek Elementary	4304013		65.86%	17.24%	16.90%	34.14%
Cabot School District	4304000	Northside Elementary School	4304008	2.11%	69.62%	16.46%	11.81%	28.27%
Cabot School District	4304000	Southside Elementary School	4304007	2.53%	67.51%	13.92%	16.03%	29.95%
Cabot School District	4304000	Stagecoach Elementary School	4304014		67.43%	20.83%	11.74%	32.57%
Cabot School District	4304000	Ward Central Elementary	4304009	1.89%	66.04%	16.98%	15.09%	32.07%
Cabot School District	4304000	Westside Elementary School	4304006		66.82%	16.13%	17.05%	33.18%
Caddo Hills School District	4901000	Caddo Hills Elementary School	4901001	3.41%	59.66%	14.77%	22.16%	36.93%
Caddo Hills School District	4901000	Caddo Hills High School	4901003		54.55%	22.73%	22.73%	45.46%
Calico Rock School District	3301000	Calico Rock Elementary School	3301001	7.69%	66.92%	10.77%	14.62%	25.39%
Calico Rock School District	3301000	Calico Rock High School	3301002		78.38%	21.63%		21.63%
Camden Fairview School Dist	5204000	Camden Fairview High School	5204023		55.84%	22.08%	22.08%	44.16%
Camden Fairview School Dist	5204000	Camden Fairview Intermediate	5204026		57.02%	21.93%	21.05%	42.98%
Camden Fairview School Dist	5204000	Camden Fairview Middle School	5204028		61.75%	17.97%	20.28%	38.25%
Camden Fairview School Dist	5204000	Fairview Elementary School	5204021		60.80%	18.18%	21.02%	39.20%
Camden Fairview School Dist	5204000	Ivory Primary School	5204025		70.13%	10.39%	19.48%	29.87%
Carlisle School District	4303000	Carlisle Elementary School	4303012		56.02%	17.28%	26.70%	43.98%
Carlisle School District	4303000	Carlisle High School	4303013		64.13%	10.87%	25.00%	35.87%
Cave City School District	6802000	Cave City Elementary School	6802001	2.86%	59.05%	14.29%	23.81%	38.10%
Cave City School District	6802000	Cave City High School	6802002		61.45%	15.66%	22.89%	38.55%
Cave City School District	6802000	Cave City Middle School	6802007		50.57%	21.84%	27.59%	49.43%
Cave City School District	6802000	Evening Shade Elem School	6802005		61.70%	27.66%	10.64%	38.30%
Cedar Ridge School District	3212000	Cedar Ridge High School	3212027	4.67%	56.07%	17.76%	21.50%	39.26%
Cedar Ridge School District	3212000	Cord-Charlotte Elem School	3212010		62.32%	15.94%	21.74%	37.68%
Cedar Ridge School District	3212000	Newark Elementary School	3212026	4.49%	52.81%	19.10%	23.60%	42.70%
Cedarville School District	1702000	Cedarville Elementary School	1702008		67.34%	16.08%	16.58%	32.66%
Cedarville School District	1702000	Cedarville High School	1702009		60.61%	39.39%		39.39%
Cedarville School District	1702000	Cedarville Middle School	1702010		68.38%	17.65%	13.97%	31.62%
Centerpoint School District	5502000	Centerpoint High School	5502010		58.63%	20.00%	21.36%	41.36%
Centerpoint School District	5502000	Centerpoint Intermediate Sch	5502008		59.76%	20.73%	19.51%	40.24%
Centerpoint School District	5502000	Centerpoint Primary School	5502006		62.73%	18.63%	18.63%	37.26%
Charleston School District	2402000	Charleston Elementary School	2402006	2.98%	63.40%	15.32%	18.30%	33.62%
Charleston School District	2402000	Charleston High School	2402007	7.02%	68.42%	12.28%	12.28%	24.56%
Clarendon School District	4802000	Clarendon Elementary School	4802008		54.47%	18.70%	26.83%	45.53%
Clarendon School District	4802000	Clarendon High School	4802010		61.22%	10.20%	28.57%	38.77%
Clarendon School District	4802000	Holly Grove Elementary School	4802013		50.00%	21.43%	28.57%	50.00%
Clarksville School District	3601000	Clarksville High School	3601005		62.50%	15.97%	21.53%	37.50%
Clarksville School District	3601000	Clarksville Junior High School	3601004		62.58%	13.61%	23.81%	37.42%
Clarksville School District	3601000	Clarksville Primary School	3601003	2.89%	58.26%	18.18%	20.66%	38.84%
Clarksville School District	3601000	Kraus Middle School	3601002		44.32%	25.00%	30.68%	55.68%
Clarksville School District	3601000	Pyron Elementary School	3601001	3.08%	61.99%	14.73%	20.21%	34.94%
Cleveland County School Dist	1305000	Kingsland Elementary School	1305001		57.58%	15.15%	27.27%	42.42%
Cleveland County School Dist	1305000	Rison Elementary School	1305009		54.31%	22.34%	23.35%	45.69%
Cleveland County School Dist	1305000	Rison High School	1305010		45.38%	23.08%	31.54%	54.62%
Clinton School District	7102000	Clinton High School	7102006		63.26%	22.45%	14.29%	36.74%
Clinton School District	7102000	Clinton Intermediate School	7102007		48.77%	23.46%	27.78%	51.24%
Clinton School District	7102000	Clinton Jr High School	7102008		54.21%	19.63%	26.17%	45.80%
Clinton School District	7102000	Cowsert Elementary School	7102005	3.21%	66.31%	16.58%	13.90%	30.48%
Concord School District	1201000	Concord Elementary School	1201001	4.35%	63.77%	9.42%	22.46%	31.88%
Concord School District	1201000	Concord High School	1201002		68.18%	16.67%	15.15%	31.82%
Concord School District	1201000	Wilburn Elementary School	1201018		57.58%	27.27%	15.15%	42.42%
Conway School District	2301000	Bob Courtney Middle School	2301013		60.29%	19.12%	20.59%	39.71%
Conway School District	2301000	Carl Stuart Middle School	2301004		66.12%	19.74%	14.14%	33.88%
Conway School District	2301000	Conway High East	2301005	1.56%	64.00%	18.67%	15.78%	34.45%
Conway School District	2301000	Ellen Smith Elementary School	2301003	2.76%	64.48%	17.24%	15.52%	32.76%
Conway School District	2301000	Florence Mattison Elem School	2301009		64.62%	17.45%	17.92%	35.37%
Conway School District	2301000	Ida Burns Elementary School	2301001		60.78%	19.89%	19.34%	39.23%
Conway School District	2301000	Jim Stone Elementary School	2301011	2.07%	73.37%	10.95%	13.61%	24.56%

School District	District LEA	School	School LEA	Under weight	Healthy Weight	At Risk for Over weight	Over weight	At Risk for Over weight or Over weight
Conway School District	2301000	Julia Lee Moore Elem School	2301008		66.95%	15.45%	17.60%	33.05%
Conway School District	2301000	Marguerite Vann Elem School	2301010		62.10%	19.18%	18.72%	37.90%
Conway School District	2301000	Ray-Phyllis Simon Intermediate	2301017		58.49%	17.74%	23.77%	41.51%
Conway School District	2301000	Ruth Doyle Intermediate School	2301016		58.21%	17.96%	23.84%	41.80%
Conway School District	2301000	Sallie Cone Elementary School	2301002		60.42%	15.62%	23.96%	39.58%
Conway School District	2301000	Theodore Jones Elem School	2301012	5.33%	64.89%	12.44%	17.33%	29.77%
Corning School District	1101000	Central Elementary School	1101005		53.84%	17.75%	28.40%	46.15%
Corning School District	1101000	Corning High School	1101004		52.94%	20.00%	27.06%	47.06%
Corning School District	1101000	Park Elementary School	1101006		67.63%	13.29%	19.08%	32.37%
Cotter School District	0302000	Amanda Gist Elem School	0302006	2.72%	55.43%	20.65%	21.20%	41.85%
Cotter School District	0302000	Cotter High School	0302007		58.42%	16.85%	24.72%	41.57%
County Line School District	2403000	County Line Elementary School	2403011		60.63%	18.90%	20.47%	39.37%
County Line School District	2403000	County Line High School	2403012		58.82%	14.71%	26.47%	41.18%
Cross County School District	1901000	Cross County High School	1901004		60.00%	16.36%	23.64%	40.00%
Cross County School District	1901000	Cross County Intermediate Sch	1901005		49.38%	17.28%	33.33%	50.61%
Cross County School District	1901000	Cross County Primary School	1901003		60.00%	15.00%	25.00%	40.00%
Crossett School District	0201000	Anderson Elementary School	0201001		60.47%	23.31%	16.22%	39.53%
Crossett School District	0201000	Crossett High School	0201006		60.38%	22.64%	16.98%	39.62%
Crossett School District	0201000	Daniel Intermediate School	0201005	5.26%	45.11%	21.80%	27.82%	49.62%
Crossett School District	0201000	Norman Junior High School	0201008		67.85%	16.43%	15.71%	32.14%
Crossett School District	0201000	North Crossett Primary School	0201007	4.51%	65.41%	12.78%	17.29%	30.07%
Cushman School District	3203000	Cushman Elementary School	3203014		64.36%	14.85%	20.79%	35.64%
Cushman School District	3203000	Cushman High School	3203015		44.74%	39.47%	15.79%	55.26%
Cutter-Morning Star Sch Dist	2601000	Cutter-Morning Star Elem Sch	2601001	4.07%	68.02%	12.79%	15.12%	27.91%
Cutter-Morning Star Sch Dist	2601000	Cutter-Morning Star High Sch	2601002		55.67%	17.53%	26.80%	44.33%
Danville School District	7503000	Danville High School	7503006		58.43%	12.36%	29.21%	41.57%
Danville School District	7503000	S C Tucker Elementary School	7503005		49.77%	13.49%	36.74%	50.23%
Dardanelle School District	7504000	Dardanelle Elementary School	7504009	2.55%	56.20%	17.52%	23.72%	41.24%
Dardanelle School District	7504000	Dardanelle High School	7504011		57.14%	23.31%	19.55%	42.86%
Dardanelle School District	7504000	Dardanelle Middle School	7504010		49.55%	18.92%	31.53%	50.45%
Dardanelle School District	7504000	Dardanelle Primary School	7504013		62.68%	18.12%	19.20%	37.32%
Decatur School District	0402000	Decatur Elementary School	0402008		65.68%	18.63%	15.69%	34.32%
Decatur School District	0402000	Decatur High School	0402009		55.22%	22.39%	22.39%	44.78%
Decatur School District	0402000	Decatur Middle School	0402010		68.42%	31.58%		31.58%
Deer-Mt Judea School District	5106000	Deer Elementary School	5106001		64.00%	24.00%	12.00%	36.00%
Deer-Mt Judea School District	5106000	Deer High School	5106002		66.67%	33.33%		33.33%
Deer-Mt Judea School District	5106000	Mount Judea Elementary School	5106009		60.47%	23.26%	16.28%	39.54%
Delight School District	5501000	Delight Elementary School	5501001		57.32%	15.85%	26.83%	42.68%
Delight School District	5501000	Delight High School	5501002		50.00%	29.55%	20.45%	50.00%
DeQueen School District	6701000	DeQueen Elementary School	6701001		50.59%	21.43%	27.98%	49.41%
DeQueen School District	6701000	DeQueen Middle School	6701004		56.53%	14.23%	29.25%	43.48%
DeQueen School District	6701000	DeQueen Primary	6701002		50.45%	19.52%	30.03%	49.55%
DeQueen School District	6701000	Lockesburg Elementary School	6701016		51.85%	22.22%	25.93%	48.15%
DeQueen School District	6701000	Lockesburg High School	6701017		48.71%	23.08%	28.21%	51.29%
Dermott School District	0901000	Dermott Elementary School	0901001	4.27%	54.70%	20.51%	20.51%	41.02%
Dermott School District	0901000	Dermott High School	0901003		64.18%	13.43%	22.39%	35.82%
Des Arc School District	5901000	Des Arc Elementary School	5901001		55.47%	15.33%	29.20%	44.53%
Des Arc School District	5901000	Des Arc High School	5901002		53.63%	18.84%	27.54%	46.38%
Dewitt School District	0101000	Dewitt Elementary School	0101001		58.50%	21.34%	20.16%	41.50%
Dewitt School District	0101000	Dewitt High School	0101004		61.79%	20.22%	17.98%	38.20%
Dewitt School District	0101000	Dewitt Middle School	0101003		60.25%	18.01%	21.74%	39.75%
Dewitt School District	0101000	Gillett Elementary School	0101008		62.86%	22.86%	14.29%	37.15%
Dewitt School District	0101000	Gillett High School	0101009		59.26%	22.22%	18.52%	40.74%
Dewitt School District	0101000	Humphrey Elementary School	0101017		64.00%	36.00%		36.00%
Dierks School District	3102000	Dierks High School	3102002		57.50%	17.50%	25.00%	42.50%
Dierks School District	3102000	Joann Walters Elementary Sch	3102001		68.68%	18.07%	13.25%	31.32%
Dollarway School District	3502000	Alzheimer-Martin Elementary	3502005		50.00%	14.81%	35.19%	50.00%
Dollarway School District	3502000	Dollarway High School	3502010		60.91%	15.45%	23.64%	39.09%
Dollarway School District	3502000	Dollarway Middle School	3502009	2.42%	51.61%	17.34%	28.63%	45.97%
Dollarway School District	3502000	Matthews Elementary School	3502006		62.90%	21.77%	15.32%	37.09%
Dollarway School District	3502000	Townsend Park N Elementary	3502007		62.28%	17.54%	20.18%	37.72%
Dollarway School District	3502000	Townsend Park S Elementary	3502008		56.41%	10.26%	33.33%	43.59%
Dover School District	5802000	Dover High School	5802006		67.90%	12.35%	19.75%	32.10%
Dover School District	5802000	Dover Intermediate School	5802007		57.43%	20.79%	21.78%	42.57%
Dover School District	5802000	Dover Middle School	5802008		58.54%	12.20%	29.27%	41.47%

School District	District LEA	School	School LEA	Under weight	Healthy Weight	At Risk for Over weight	Over weight	At Risk for Over weight or Over weight
Dover School District	5802000	Dover Primary School	5802005	67.71%		11.98%	20.31%	32.29%
Dreamland Academy	6042700	Dreamland Academy	6042701	62.50%		23.08%	14.42%	37.50%
Drew Central School District	2202000	Drew Central Elem School	2202004	1.82%	59.27%	10.91%	28.00%	38.91%
Drew Central School District	2202000	Drew Central High School	2202005	57.90%		19.55%	22.56%	42.11%
Dumas School District	2104000	Central Elementary School	2104017	64.34%		17.83%	17.83%	35.66%
Dumas School District	2104000	Dumas High School	2104021	59.50%		12.40%	28.10%	40.50%
Dumas School District	2104000	Dumas Junior High School	2104020	60.00%		17.14%	22.86%	40.00%
Dumas School District	2104000	Reed Elementary School	2104018	52.05%		18.03%	29.92%	47.95%
Dumas School District	2104000	Reed Intermediate School	2104023	55.27%		21.05%	23.68%	44.73%
Earle School District	1802000	Dunbar Middle School	1802006	63.26%		14.29%	22.45%	36.74%
Earle School District	1802000	Earle Elementary School	1802005	67.07%		15.85%	17.07%	32.92%
Earle School District	1802000	Earle High School	1802007	54.76%		14.29%	30.95%	45.24%
East End School District	5301000	Anne Watson Elem School	5301001	3.64%	56.97%	15.76%	23.64%	39.40%
East End School District	5301000	Bigelow High School	5301002	64.58%		18.75%	16.67%	35.42%
East Poinsett Co School Dist	5608000	East Poinsett Co High School	5608037	51.16%		20.93%	27.91%	48.84%
East Poinsett Co School Dist	5608000	Lepanto Elementary	5608034	60.15%		15.79%	24.06%	39.85%
East Poinsett Co School Dist	5608000	Tyrnza Elementary	5608035	45.27%		10.53%	44.21%	54.74%
El Dorado School District	7001000	Barton Jr High School	7001010	57.01%		20.70%	22.29%	42.99%
El Dorado School District	7001000	El Dorado High School	7001012	60.92%		19.92%	19.16%	39.08%
El Dorado School District	7001000	Hugh Goodwin Elem School	7001001	62.60%		19.75%	17.65%	37.40%
El Dorado School District	7001000	Northwest Elementary School	7001004	63.02%		16.44%	20.55%	36.99%
El Dorado School District	7001000	Retta Brown Elementary School	7001005	61.97%		23.94%	14.08%	38.02%
El Dorado School District	7001000	Union Elementary School	7001056	65.62%		12.50%	21.88%	34.38%
El Dorado School District	7001000	Washington Middle School	7001011	48.83%		23.05%	28.12%	51.17%
El Dorado School District	7001000	Yocum Elementary School	7001009	59.88%		16.36%	23.77%	40.13%
Elkins School District	7201000	Elkins Elem Primary School	7201004	59.05%		17.14%	23.81%	40.95%
Elkins School District	7201000	Elkins Elementary School	7201001	58.45%		24.65%	16.90%	41.55%
Elkins School District	7201000	Elkins High School	7201002	70.27%		16.22%	13.51%	29.73%
Elkins School District	7201000	Elkins Middle School	7201003	61.90%		13.10%	25.00%	38.10%
Emerson-Taylor School District	1408000	Emerson Elementary School	1408001	52.64%		16.84%	30.53%	47.37%
Emerson-Taylor School District	1408000	Emerson High School	1408002	69.09%		14.55%	16.36%	30.91%
Emerson-Taylor School District	1408000	Taylor Elementary School	1408018	65.82%		16.46%	17.72%	34.18%
Emerson-Taylor School District	1408000	Taylor High School	1408019	58.97%		28.21%	12.82%	41.03%
England School District	4302000	England Elementary School	4302017	55.00%		18.33%	26.67%	45.00%
England School District	4302000	England High School	4302018	76.67%		23.34%		23.34%
England School District	4302000	England Middle School	4302019	4.10%	50.00%	15.57%	30.33%	45.90%
Eureka Springs School District	0802000	Eureka Springs Elem School	0802006	81.05%		13.68%	5.26%	18.94%
Eureka Springs School District	0802000	Eureka Springs Middle School	0802008	69.39%		16.33%	14.29%	30.62%
Farmington School District	7202000	Farmington High School	7202006	67.39%		13.04%	19.57%	32.61%
Farmington School District	7202000	George R Ledbetter Elem Sch	7202005	3.73%	64.60%	14.29%	17.39%	31.68%
Farmington School District	7202000	Jerry Pop Williams Elem Sch	7202008	69.90%		16.85%	13.26%	30.11%
Farmington School District	7202000	Randall G Lynch Middle School	7202007	2.31%	64.62%	16.15%	16.92%	33.07%
Fayetteville School District	7203000	Asbell Elementary School	7203010	65.61%		12.70%	21.69%	34.39%
Fayetteville School District	7203000	Butterfield Elementary School	7203012	73.06%		15.54%	11.40%	26.94%
Fayetteville School District	7203000	Fayetteville High School East	7203020	69.94%		16.34%	13.73%	30.07%
Fayetteville School District	7203000	Happy Hollow Elem School	7203013	66.67%		18.37%	14.97%	33.34%
Fayetteville School District	7203000	Holcomb Elementary School	7203022	65.54%		17.98%	16.48%	34.46%
Fayetteville School District	7203000	Holt Middle School	7203025	58.97%		22.44%	18.59%	41.03%
Fayetteville School District	7203000	Leverett Elementary School	7203015	73.05%		12.77%	14.18%	26.95%
Fayetteville School District	7203000	McNair Middle School	7203024	3.27%	66.12%	20.41%	10.20%	30.61%
Fayetteville School District	7203000	Owl Creek School	7203027	60.70%		16.59%	22.71%	39.30%
Fayetteville School District	7203000	Ramay Junior High School	7203018	63.12%		23.36%	13.52%	36.88%
Fayetteville School District	7203000	Root Elementary School	7203016	2.76%	70.97%	17.05%	9.22%	26.27%
Fayetteville School District	7203000	Vandergriff Elementary School	7203023	79.94%		12.37%	7.69%	20.06%
Fayetteville School District	7203000	Washington Elementary School	7203017	71.51%		13.95%	14.53%	28.48%
Fayetteville School District	7203000	Woodland Junior High School	7203019	3.94%	68.10%	17.20%	10.75%	27.95%
Flippin School District	4501000	Flippin Elementary School	4501001	65.41%		17.84%	16.76%	34.60%
Flippin School District	4501000	Flippin High School	4501002	61.40%		22.81%	15.79%	38.60%
Flippin School District	4501000	Flippin Middle School	4501003	58.40%		17.60%	24.00%	41.60%
Fordyce School District	2002000	Fordyce Elementary Schools	2002008	53.94%		19.09%	26.97%	46.06%
Fordyce School District	2002000	Fordyce High School	2002007	53.57%		23.81%	22.62%	46.43%
Fordyce School District	2002000	Fordyce Middle School	2002009	59.31%		15.86%	24.83%	40.69%
Foreman School District	4102000	Foreman High School	4102010	71.43%		14.29%	14.29%	28.58%
Foreman School District	4102000	Oscar Hamilton Elementary Sch	4102008	5.43%	55.04%	17.83%	21.71%	39.54%

School District	District LEA	School	School LEA	Under weight	Healthy Weight	At Risk for Over weight	Over weight	At Risk for Over weight or Over weight
Forrest City School District	6201000	Central Elementary School	6201003	2.72%	61.63%	16.09%	19.55%	35.64%
Forrest City School District	6201000	Forrest City High School	6201011	2.78%	55.00%	21.67%	20.56%	42.23%
Forrest City School District	6201000	Forrest City Jr High	6201010		60.39%	16.47%	23.14%	39.61%
Forrest City School District	6201000	Lincoln Middle School	6201012	1.75%	54.20%	17.13%	26.92%	44.05%
Forrest City School District	6201000	Stewart Elementary School	6201014	3.03%	60.61%	15.15%	21.21%	36.36%
Fort Smith School District	6601000	Albert Pike Elementary School	6601014		55.50%	17.03%	27.47%	44.50%
Fort Smith School District	6601000	Ballman Elementary School	6601001		59.71%	19.40%	20.90%	40.30%
Fort Smith School District	6601000	Barling Elementary School	6601002		68.75%	15.97%	15.28%	31.25%
Fort Smith School District	6601000	Beard Elementary School	6601003		68.42%	14.29%	17.29%	31.58%
Fort Smith School District	6601000	Belle Point Alternative Center	6601005		66.67%	33.33%		33.33%
Fort Smith School District	6601000	Bonneville Elementary School	6601006		69.84%	15.87%	14.29%	30.16%
Fort Smith School District	6601000	Carnall Elementary School	6601007		64.42%	19.23%	16.35%	35.58%
Fort Smith School District	6601000	Cavanaugh Elementary School	6601008		63.30%	13.92%	22.78%	36.70%
Fort Smith School District	6601000	Dora Kimmons Jr High School	6601022		61.06%	15.38%	23.56%	38.94%
Fort Smith School District	6601000	Elmer H Cook Elem School	6601031	2.25%	64.63%	19.94%	13.18%	33.12%
Fort Smith School District	6601000	Euper Lane Elementary School	6601033	2.70%	63.24%	19.46%	14.59%	34.05%
Fort Smith School District	6601000	Fairview Elementary School	6601010		71.15%	15.38%	13.46%	28.84%
Fort Smith School District	6601000	Harry C Morrison Elem School	6601030		59.79%	15.46%	24.74%	40.20%
Fort Smith School District	6601000	Howard Elementary School	6601011		57.62%	21.19%	21.19%	42.38%
Fort Smith School District	6601000	John P Woods Elem School	6601029	2.50%	72.50%	14.00%	11.00%	25.00%
Fort Smith School District	6601000	L A Chaffin Jr High School	6601020		65.08%	19.58%	15.34%	34.92%
Fort Smith School District	6601000	Northside High School	6601024		62.37%	19.94%	17.68%	37.62%
Fort Smith School District	6601000	Ramsey Junior High School	6601023		65.13%	15.55%	19.33%	34.88%
Fort Smith School District	6601000	Raymond E Orr Elem School	6601012		63.89%	15.56%	20.56%	36.12%
Fort Smith School District	6601000	Southside High School	6601025	3.84%	72.38%	12.79%	11.00%	23.79%
Fort Smith School District	6601000	Spradling Elementary School	6601016		60.31%	17.53%	22.16%	39.69%
Fort Smith School District	6601000	Sunnymede Elementary School	6601017	1.78%	59.07%	16.37%	22.78%	39.15%
Fort Smith School District	6601000	Sutton Elementary School	6601018	2.13%	60.85%	14.47%	22.55%	37.02%
Fort Smith School District	6601000	Tilles Elementary School	6601032	2.43%	58.30%	18.22%	21.05%	39.27%
Fort Smith School District	6601000	Trusty Elementary School	6601019		59.06%	18.12%	22.82%	40.94%
Fort Smith School District	6601000	William O Darby Jr High Sch	6601021		58.22%	20.55%	21.23%	41.78%
Fouke School District	4603000	Fouke Elementary School	4603009		61.75%	17.51%	20.74%	38.25%
Fouke School District	4603000	Fouke High School	4603010		62.50%	22.50%	15.00%	37.50%
Fouke School District	4603000	Fouke Middle School	4603011		63.70%	19.26%	17.04%	36.30%
Fountain Lake School District	2602000	Fountain Lake Elementary	2602005	2.80%	64.80%	16.00%	16.40%	32.40%
Fountain Lake School District	2602000	Fountain Lake High School	2602006		74.28%	13.33%	12.38%	25.71%
Genoa Central School District	4602000	Gary E Cobb Middle School	4602007	5.49%	55.49%	18.29%	20.73%	39.02%
Genoa Central School District	4602000	Genoa Central Elem School	4602005		68.26%	12.70%	19.05%	31.75%
Genoa Central School District	4602000	Genoa Central High School	4602006		63.77%	10.14%	26.09%	36.23%
Gentry School District	0403000	Gentry High School	0403014		69.84%	16.67%	13.49%	30.16%
Gentry School District	0403000	Gentry Intermediate School	0403013		68.52%	15.74%	15.74%	31.48%
Gentry School District	0403000	Gentry Middle School	0403015		59.60%	20.53%	19.87%	40.40%
Gentry School District	0403000	Gentry Primary School	0403016	3.16%	65.26%	15.79%	15.79%	31.58%
Glen Rose School District	3002000	Glen Rose Elementary School	3002007		71.33%	14.69%	13.99%	28.68%
Glen Rose School District	3002000	Glen Rose High School	3002009		60.81%	16.22%	22.97%	39.19%
Glen Rose School District	3002000	Glen Rose Middle School	3002010		69.47%	8.42%	22.11%	30.53%
Gosnell School District	4708000	Gosnell Elementary School	4708028	2.31%	59.38%	18.51%	19.79%	38.30%
Gosnell School District	4708000	Gosnell High School	4708031		60.11%	16.94%	22.95%	39.89%
Gravette School District	0404000	Glenn Duffy Elementary School	0404023		72.73%	17.17%	10.10%	27.27%
Gravette School District	0404000	Gravette High School	0404022		70.79%	13.48%	15.73%	29.21%
Gravette School District	0404000	Gravette Middle School	0404024		71.85%	14.07%	14.07%	28.14%
Gravette School District	0404000	Gravette Upper Elementary	0404025		60.24%	25.30%	14.46%	39.76%
Green Forest School District	0803000	Green Forest Elem School	0803011		53.85%	20.71%	25.44%	46.15%
Green Forest School District	0803000	Green Forest High School	0803012		55.77%	19.23%	25.00%	44.23%
Green Forest School District	0803000	Green Forest Intermediate Sch	0803013	4.03%	52.35%	14.09%	29.53%	43.62%
Greenbrier School District	2303000	Greenbrier Eastside Elementary	2303016		73.43%	14.69%	11.88%	26.57%
Greenbrier School District	2303000	Greenbrier High School	2303017		72.88%	11.86%	15.25%	27.11%
Greenbrier School District	2303000	Greenbrier Junior High School	2303020		58.46%	18.97%	22.56%	41.53%
Greenbrier School District	2303000	Greenbrier Middle School	2303018	2.45%	57.84%	16.67%	23.04%	39.71%
Greenbrier School District	2303000	Greenbrier Westside Elem	2303019		68.56%	17.30%	14.15%	31.45%
Greene Co Tech School Dist	2807000	Green Co Tech Jr High School	2807009		59.48%	16.32%	24.21%	40.53%
Greene Co Tech School Dist	2807000	Greene Co Tech High School	2807008		60.00%	15.12%	24.88%	40.00%
Greene Co Tech School Dist	2807000	Greene Co Tech Interm Sch	2807007	3.23%	53.46%	19.35%	23.96%	43.31%
Greene Co Tech School Dist	2807000	Greene Co Tech Primary School	2807010	1.26%	61.09%	16.32%	21.34%	37.66%
Greene Co Tech School Dist	2807000	Greene Co Tech Elem School	2807004	2.46%	53.69%	23.15%	20.69%	43.84%

School District	District LEA	School	School LEA	Under weight	Healthy Weight	At Risk for Over weight	Over weight	At Risk for Over weight or Over weight
Greenland School District	7204000	Greenland Elementary School	7204027	62.64%		17.82%	19.54%	37.36%
Greenland School District	7204000	Greenland High School	7204028	65.96%		19.15%	14.89%	34.04%
Greenland School District	7204000	Greenland Middle School	7204029	59.00%		20.00%	21.00%	41.00%
Greenwood School District	6602000	East Hills Middle School	6602045	3.98%	59.73%	19.47%	16.81%	36.28%
Greenwood School District	6602000	Greenwood High School	6602043	2.52%	67.65%	13.45%	16.39%	29.84%
Greenwood School District	6602000	North Main Intermediate Sch	6602041	2.22%	58.22%	15.56%	24.00%	39.56%
Greenwood School District	6602000	Raymond E Wells Jr High Sch	6602042	65.63%		14.29%	20.08%	34.37%
Greenwood School District	6602000	Westwood Primary School	6602044	3.10%	68.60%	14.73%	13.57%	28.30%
Gurdon School District	1003000	Cabe Middle School	1003017	47.54%		20.49%	31.97%	52.46%
Gurdon School District	1003000	Gurdon High School	1003018	66.67%		16.67%	16.67%	33.34%
Gurdon School District	1003000	Gurdon Primary School	1003016	60.64%		17.55%	21.81%	39.36%
Guy-Perkins School District	2304000	Guy-Perkins Elementary School	2304021	66.96%		17.39%	15.65%	33.04%
Guy-Perkins School District	2304000	Guy-Perkins High School	2304022	48.78%		21.95%	29.27%	51.22%
Hackett School District	6603000	Hackett Elementary School	6603047	3.12%	63.75%	12.50%	20.62%	33.12%
Hackett School District	6603000	Hackett High School	6603048	71.59%		11.36%	17.05%	28.41%
Hamburg School District	0203000	Allbritton Upper Elem School	0203016	56.83%		18.58%	24.59%	43.17%
Hamburg School District	0203000	Hamburg High School	0203018	56.35%		20.63%	23.02%	43.65%
Hamburg School District	0203000	Hamburg Junior High School	0203017	52.50%		21.67%	25.83%	47.50%
Hamburg School District	0203000	Noble Lower Elementary School	0203028	67.15%		13.04%	19.81%	32.85%
Hamburg School District	0203000	Portland Elementary School	0203027	59.79%		15.46%	24.74%	40.20%
Hamburg School District	0203000	Wilmot Elementary School	0203019	64.29%		20.00%	15.71%	35.71%
Hampton School District	0701000	Hampton Elementary School	0701001	57.96%		19.89%	22.16%	42.05%
Hampton School District	0701000	Hampton High School	0701002	53.33%		17.14%	29.52%	46.66%
Harmony Grove School District	5205000	Harmony Grove Elem School	5205028	8.82%	56.72%	14.29%	20.17%	34.46%
Harmony Grove School District	5205000	Harmony Grove High School	5205029	58.73%		17.46%	23.81%	41.27%
Harmony Grove School District	5205000	Sparkman Elementary School	5205011	54.90%		17.65%	27.45%	45.10%
Harmony Grove School District	5205000	Sparkman High School	5205012	61.11%		38.89%		38.89%
Harmony Grove School District	6304000	Harmony Grove High School	6304030	48.48%		33.33%	18.18%	51.51%
Harmony Grove School District	6304000	Harmony Grove Middle School	6304031	4.55%	59.85%	17.42%	18.18%	35.60%
Harmony Grove School District	6304000	Westbrook Elementary School	6304029	69.23%		17.95%	12.82%	30.77%
Harrisburg School District	5602000	Harrisburg Elementary School	5602005	61.74%		16.09%	22.17%	38.26%
Harrisburg School District	5602000	Harrisburg High School	5602007	52.94%		17.65%	29.41%	47.06%
Harrisburg School District	5602000	Harrisburg Middle School	5602008	54.86%		20.14%	25.00%	45.14%
Harrison School District	0503000	Eagle Heights Elem School	0503011	65.66%		18.18%	16.16%	34.34%
Harrison School District	0503000	Forest Heights Elem School	0503012	2.67%	66.84%	13.90%	16.58%	30.48%
Harrison School District	0503000	Harrison High School	0503016	3.21%	61.93%	16.51%	18.35%	34.86%
Harrison School District	0503000	Harrison Jr High School	0503015	63.23%		19.35%	17.42%	36.77%
Harrison School District	0503000	Harrison Middle School	0503018	64.08%		17.37%	18.56%	35.93%
Harrison School District	0503000	Skyline Heights Elem School	0503013	2.73%	64.55%	13.64%	19.09%	32.73%
Harrison School District	0503000	Woodland Heights Elem School	0503014	64.64%		9.76%	25.61%	35.37%
Hartford School District	6604000	Hartford Elementary School	6604051	52.94%		21.18%	25.88%	47.06%
Hartford School District	6604000	Hartford High School	6604052	69.70%		30.30%		30.30%
Hazen School District	5903000	DeValls Bluff Elementary Sch	5903006	43.18%		22.73%	34.09%	56.82%
Hazen School District	5903000	Hazen Elementary School	5903011	63.31%		18.71%	17.99%	36.70%
Hazen School District	5903000	Hazen High School	5903012	56.18%		19.10%	24.72%	43.82%
Heber Springs School District	1202000	Heber Springs Elem School	1202005	1.92%	64.37%	16.86%	16.86%	33.72%
Heber Springs School District	1202000	Heber Springs High School	1202006	60.46%		18.60%	20.93%	39.53%
Heber Springs School District	1202000	Heber Springs Middle School	1202007	63.50%		18.00%	18.50%	36.50%
Hector School District	5803000	Hector Elementary School	5803009	3.82%	62.60%	13.74%	19.85%	33.59%
Hector School District	5803000	Hector High School	5803010	67.41%		12.36%	20.22%	32.58%
Helena-W Helena School Dist	5403000	Beech Crest Elementary School	5403011	52.17%		23.91%	23.91%	47.82%
Helena-W Helena School Dist	5403000	Central High School	5403019	65.00%		12.86%	22.14%	35.00%
Helena-W Helena School Dist	5403000	J F Wahl Elementary School	5403015	55.74%		24.59%	19.67%	44.26%
Helena-W Helena School Dist	5403000	Miller Junior High School	5403018	52.47%		19.14%	28.40%	47.54%
Helena-W Helena School Dist	5403000	West Side Elementary School	5403016	2.94%	48.82%	16.47%	31.76%	48.23%
Helena-W Helena School Dist	5403000	Woodruff Elementary School	5403017	55.29%		21.63%	23.08%	44.71%
Hermitage School District	0601000	Hermitage Elementary School	0601006	51.06%		19.15%	29.79%	48.94%
Hermitage School District	0601000	Hermitage Middle School	0601008	53.62%		21.74%	24.64%	46.38%
Highland School District	6804000	Cherokee Elementary School	6804009	8.59%	66.56%	14.72%	10.12%	24.84%
Highland School District	6804000	Highland High School	6804010	2.45%	57.84%	19.12%	20.59%	39.71%
Highland School District	6804000	Highland Middle School	6804011	53.33%		16.67%	30.00%	46.67%
Hillcrest School District	3809000	Hillcrest Elementary School	3809014	56.46%		19.35%	24.19%	43.54%
Hillcrest School District	3809000	Hillcrest High School	3809023	66.28%		18.60%	15.12%	33.72%
Hope Academy	3540700	Hope Academy	3540702	44.83%		20.69%	34.48%	55.17%

School District	District LEA	School	School LEA	Under weight	Healthy Weight	At Risk for Over weight	Over weight	At Risk for Over weight or Over weight
Hope School District	2903000	Beryl Henry Upper Elem School	2903008	51.46%		20.47%	28.07%	48.54%
Hope School District	2903000	Hope High School	2903012	48.69%		21.47%	29.84%	51.31%
Hope School District	2903000	William Jefferson Clinton Prim	2903007	9.93%	60.43%	11.75%	17.88%	29.63%
Hope School District	2903000	Yerger Junior High School	2903011	57.15%		23.21%	19.64%	42.85%
Horatio School District	6703000	Horatio Elementary School	6703012	56.29%		18.54%	25.17%	43.71%
Horatio School District	6703000	Horatio High School	6703013	56.95%		15.28%	27.78%	43.06%
Horatio School District	6703000	Winthrop Elementary School	6703014	79.31%		20.69%		20.69%
Hot Springs School District	2603000	Gardner Magnet School	2603011	59.92%		19.01%	21.07%	40.08%
Hot Springs School District	2603000	Hot Springs High School	2603021	59.39%		20.61%	20.00%	40.61%
Hot Springs School District	2603000	Hot Springs Middle School	2603020	1.47%	57.25%	16.22%	25.06%	41.28%
Hot Springs School District	2603000	Langston Magnet School	2603023	3.76%	62.90%	15.05%	18.28%	33.33%
Hot Springs School District	2603000	Oaklawn Magnet School	2603015	1.52%	63.72%	15.24%	19.51%	34.75%
Hot Springs School District	2603000	Park Magnet School	2603016	4.29%	52.86%	14.29%	28.57%	42.86%
Hot Springs School District	2603000	Summit School	2603013	66.66%		33.33%		33.33%
Hoxie School District	3804000	Hoxie Elementary School	3804009	55.38%		22.56%	22.05%	44.61%
Hoxie School District	3804000	Hoxie High School	3804010	60.23%		19.32%	20.45%	39.77%
Hughes School District	6202000	Hughes High School	6202024	55.79%		20.00%	24.21%	44.21%
Hughes School District	6202000	Mildred Jackson Elem School	6202022	61.44%		19.61%	18.95%	38.56%
Huntsville School District	4401000	Huntsville High School	4401003	58.04%		20.54%	21.43%	41.97%
Huntsville School District	4401000	Huntsville Intermediate Sch	4401004	69.67%		19.66%	10.67%	30.33%
Huntsville School District	4401000	Huntsville Middle School	4401002	63.86%		21.85%	14.29%	36.14%
Huntsville School District	4401000	St Paul Elementary School	4401011	58.62%		22.41%	18.97%	41.38%
Huntsville School District	4401000	St Paul High School	4401012	73.53%		26.47%		26.47%
Huntsville School District	4401000	Watson Primary School	4401001	2.88%	62.14%	13.58%	21.40%	34.98%
Izard Co Cons School Dist	3306000	Izard Co Cons Elem School	3306014	61.29%		17.74%	20.97%	38.71%
Izard Co Cons School Dist	3306000	Izard Co Cons High School	3306015	43.24%		21.62%	35.14%	56.76%
Izard Co Cons School Dist	3306000	Izard Co Cons Middle School	3306016	53.42%		20.55%	26.03%	46.58%
Jackson Co School District	3405000	Swifton Middle School	3405019	53.33%		15.00%	31.67%	46.67%
Jackson Co School District	3405000	Tuckerman Elementary School	3405024	64.02%		17.68%	18.29%	35.97%
Jackson Co School District	3405000	Tuckerman High School	3405025	54.35%		15.22%	30.43%	45.65%
Jasper School District	5102000	Jasper Elementary School	5102005	57.26%		28.24%	14.50%	42.74%
Jasper School District	5102000	Jasper High School	5102006	59.37%		18.75%	21.88%	40.63%
Jasper School District	5102000	Kingston Elementary School	5102007	57.41%		27.78%	14.81%	42.59%
Jasper School District	5102000	Kingston High School	5102008	66.67%			33.33%	33.33%
Jasper School District	5102000	Oark Elementary School	5102023	58.69%		13.04%	28.26%	41.30%
Jasper School District	5102000	Oark High School	5102024	50.00%		50.00%		50.00%
Jessieville School District	2604000	Jessieville Elementary School	2604029	6.59%	71.98%	8.79%	12.64%	21.43%
Jessieville School District	2604000	Jessieville High School	2604030	68.85%		11.48%	19.67%	31.15%
Jessieville School District	2604000	Jessieville Middle School	2604031	64.70%		18.38%	16.91%	35.29%
Jonesboro School District	1608000	Annie Camp Jr High School	1608023	64.48%		16.82%	18.69%	35.51%
Jonesboro School District	1608000	Douglas Macarthur Jr HS	1608024	53.47%		18.75%	27.78%	46.53%
Jonesboro School District	1608000	Health or Wellness Env Magnet	1608020	54.00%		18.67%	27.33%	46.00%
Jonesboro School District	1608000	International Studies Magnet	1608021	58.33%		20.45%	21.21%	41.66%
Jonesboro School District	1608000	Jonesboro High School	1608025	60.18%		18.58%	21.24%	39.82%
Jonesboro School District	1608000	Math & Science Magnet School	1608017	55.29%		19.41%	25.29%	44.70%
Jonesboro School District	1608000	Microsociety Magnet School	1608022	60.22%		14.36%	25.41%	39.77%
Jonesboro School District	1608000	Visual & Performing Art Magnet	1608019	56.59%		15.12%	28.29%	43.41%
Junction City School District	7003000	Junction City Elem School	7003027	59.35%		21.94%	18.71%	40.65%
Junction City School District	7003000	Junction City High School	7003028	54.95%		13.51%	31.53%	45.04%
Kipp Delta College Prep School	5440700	Kipp Delta Coll Prep High Sch	5440703	53.85%		19.23%	26.92%	46.15%
Kipp Delta College Prep School	5440700	Kipp Delta College Prep School	5440702	58.89%		12.22%	28.89%	41.11%
Kirby School District	5503000	Kirby Elementary School	5503010	60.74%		28.97%	10.28%	39.25%
Lafayette County School Dist	3704000	Lafayette County Elementary	3704007	61.83%		20.43%	17.74%	38.17%
Lafayette County School Dist	3704000	Lafayette County High School	3704013	60.32%		14.29%	25.40%	39.69%
Lake Hamilton School District	2605000	Lake Hamilton Elementary Sch	2605033	66.80%		16.39%	16.80%	33.19%
Lake Hamilton School District	2605000	Lake Hamilton High School	2605034	74.04%		15.87%	10.10%	25.97%
Lake Hamilton School District	2605000	Lake Hamilton Interm Sch	2605036	69.88%		11.93%	18.18%	30.11%
Lake Hamilton School District	2605000	Lake Hamilton Jr High School	2605035	66.15%		13.46%	20.38%	33.84%
Lake Hamilton School District	2605000	Lake Hamilton Middle School	2605037	2.45%	67.83%	12.94%	16.78%	29.72%
Lake Hamilton School District	2605000	Lake Hamilton Primary School	2605038	2.31%	66.54%	13.85%	17.31%	31.16%
Lakeside School District	0903000	Eudora Elementary School	0903007	54.84%		17.74%	27.42%	45.16%
Lakeside School District	0903000	Lakeside High School	0903018	54.00%		18.00%	28.00%	46.00%
Lakeside School District	0903000	Lakeside Lower Elem School	0903015	61.62%		18.18%	20.20%	38.38%
Lakeside School District	0903000	Lakeside Middle School	0903017	55.38%		13.44%	31.18%	44.62%
Lakeside School District	0903000	Lakeside Upper Elem School	0903016	59.55%		15.73%	24.72%	40.45%

School District	District LEA	School	School LEA	Under weight	Healthy Weight	At Risk for Over weight	Over weight	At Risk for Over weight or Over weight
Lakeside School District	2606000	Lakeside High School	2606041	66.19%		19.32%	14.49%	33.81%
Lakeside School District	2606000	Lakeside Intermediate School	2606042	2.79%	60.99%	21.36%	14.86%	36.22%
Lakeside School District	2606000	Lakeside Junior High School	2606040	75.00%		13.24%	11.76%	25.00%
Lakeside School District	2606000	Lakeside Middle School	2606043	63.19%		19.78%	17.03%	36.81%
Lakeside School District	2606000	Lakeside Primary School	2606039	3.37%	67.31%	12.50%	16.83%	29.33%
Lamar School District	3604000	Lamar Elementary School	3604018	54.63%		19.02%	26.34%	45.36%
Lamar School District	3604000	Lamar High School	3604019	61.85%		19.74%	18.42%	38.16%
Lamar School District	3604000	Lamar Middle School	3604020	53.29%		15.13%	31.58%	46.71%
Lavaca School District	6605000	Lavaca Elementary School	6605056	74.70%		12.05%	13.25%	25.30%
Lavaca School District	6605000	Lavaca High School	6605057	69.09%		12.73%	18.18%	30.91%
Lavaca School District	6605000	Lavaca Middle School	6605058	3.91%	56.25%	21.88%	17.97%	39.85%
Lawrence County School District	3810000	Black Rock Elementary School	3810001	70.89%		12.66%	16.46%	29.12%
Lawrence County School District	3810000	Black Rock High School	3810002	68.00%		32.00%		32.00%
Lawrence County School District	3810000	Walnut Ridge Elem School	3810026	60.00%		21.03%	18.97%	40.00%
Lawrence County School District	3810000	Walnut Ridge High School	3810027	61.45%		20.48%	18.07%	38.55%
Lead Hill School District	0506000	Lead Hill Elementary School	0506031	75.97%		11.54%	12.50%	24.04%
Lead Hill School District	0506000	Lead Hill High School	0506032	73.43%		17.19%	9.38%	26.57%
Lee County School District	3904000	Anna Strong Elementary School	3904004	59.21%		13.16%	27.63%	40.79%
Lee County School District	3904000	Anna Strong Middle School	3904006	51.87%		20.32%	27.81%	48.13%
Lee County School District	3904000	Lee High School	3904008	47.83%		23.19%	28.99%	52.18%
Lee County School District	3904000	Whitten Elementary School	3904005	57.44%		16.49%	26.06%	42.55%
Lincoln School District	7205000	Lincoln Elementary School	7205031	65.16%		18.10%	16.74%	34.84%
Lincoln School District	7205000	Lincoln High School	7205032	61.11%		18.52%	20.37%	38.89%
Lincoln School District	7205000	Lincoln Middle School	7205033	70.21%		14.89%	14.89%	29.78%
Lisa Academy	6041700	Lisa Academy	6041702	6.08%	60.22%	19.34%	14.36%	33.70%
Lisa Academy	6041700	Lisa Academy High	6041703	48.65%		35.14%	16.22%	51.36%
Little Rock School District	6001000	Bale Elementary School	6001017	51.65%		18.54%	29.80%	48.34%
Little Rock School District	6001000	Baseline Elementary School	6001052	57.03%		18.18%	24.79%	42.97%
Little Rock School District	6001000	Booker Arts Magnet Elem Sch	6001006	2.17%	63.18%	15.16%	19.49%	34.65%
Little Rock School District	6001000	Brady Elementary School	6001018	65.25%		12.06%	22.70%	34.76%
Little Rock School District	6001000	Carver Magnet Elem School	6001021	64.36%		14.36%	21.29%	35.65%
Little Rock School District	6001000	Central High School	6001001	64.28%		14.91%	20.81%	35.72%
Little Rock School District	6001000	Chicot Primary School	6001072	57.19%		18.97%	23.85%	42.82%
Little Rock School District	6001000	Cloverdale Middle School	6001061	1.91%	52.77%	20.64%	24.68%	45.32%
Little Rock School District	6001000	David O Dodd Elem School	6001055	54.24%		22.88%	22.88%	45.76%
Little Rock School District	6001000	Dunbar Magnet Middle School	6001007	61.48%		14.96%	23.57%	38.53%
Little Rock School District	6001000	Felder Alternative Academy	6001703	55.56%		44.44%		44.44%
Little Rock School District	6001000	Forest Heights Middle School	6001009	58.26%		13.91%	27.83%	41.74%
Little Rock School District	6001000	Forest Park Elementary School	6001024	2.65%	70.37%	17.99%	8.99%	26.98%
Little Rock School District	6001000	Franklin Incentive Elem Sch	6001025	64.61%		20.79%	14.61%	35.40%
Little Rock School District	6001000	Fulbright Elementary School	6001048	67.50%		17.81%	14.69%	32.50%
Little Rock School District	6001000	Geyer Springs Elem School	6001056	73.40%		10.09%	16.51%	26.60%
Little Rock School District	6001000	Gibbs Magnet Elem School	6001027	63.91%		15.79%	20.30%	36.09%
Little Rock School District	6001000	Hall High School	6001002	56.84%		23.16%	20.00%	43.16%
Little Rock School District	6001000	Henderson Middle School	6001013	1.92%	54.81%	17.79%	25.48%	43.27%
Little Rock School District	6001000	J A Fair High School	6001063	3.47%	59.03%	17.36%	20.14%	37.50%
Little Rock School District	6001000	Jefferson Elementary School	6001030	75.00%		14.53%	10.47%	25.00%
Little Rock School District	6001000	M L King Magnet Elem School	6001035	60.45%		18.28%	21.27%	39.55%
Little Rock School District	6001000	Mabelvale Elementary School	6001057	52.27%		20.45%	27.27%	47.72%
Little Rock School District	6001000	Mabelvale Middle School	6001062	1.47%	58.44%	16.87%	23.23%	40.10%
Little Rock School District	6001000	Mann Magnet Middle School	6001003	1.42%	56.38%	21.10%	21.10%	42.20%
Little Rock School District	6001000	McClellan Magnet High School	6001064	61.82%		18.18%	20.00%	38.18%
Little Rock School District	6001000	McDermott Elementary School	6001020	59.54%		16.18%	24.28%	40.46%
Little Rock School District	6001000	Meadowcliff Elementary School	6001033	68.18%		15.58%	16.23%	31.81%
Little Rock School District	6001000	Otter Creek Elementary School	6001058	58.95%		20.09%	20.96%	41.05%
Little Rock School District	6001000	Parkview Magnet High School	6001005	65.24%		16.31%	18.45%	34.76%
Little Rock School District	6001000	Pulaski Heights Elem School	6001038	3.92%	62.75%	16.34%	16.99%	33.33%
Little Rock School District	6001000	Pulaski Heights Middle School	6001010	3.88%	60.92%	18.45%	16.75%	35.20%
Little Rock School District	6001000	Rockefeller Incentive Elem	6001050	63.32%		20.12%	16.57%	36.69%
Little Rock School District	6001000	Romine Interdist Elem School	6001040	57.93%		18.90%	23.17%	42.07%
Little Rock School District	6001000	Stephens Elementary	6001041	66.49%		14.59%	18.92%	33.51%
Little Rock School District	6001000	Terry Elementary School	6001047	64.47%		17.48%	18.05%	35.53%
Little Rock School District	6001000	W D Hamilton Learning Acad	6001070	46.88%		53.12%		53.12%
Little Rock School District	6001000	Wakefield Elementary School	6001059	59.19%		17.14%	23.67%	40.81%
Little Rock School District	6001000	Washington Magnet Elem Sch	6001042	2.55%	56.36%	17.82%	23.27%	41.09%

School District	District LEA	School	School LEA	Under weight	Healthy Weight	At Risk for Over weight	Over weight	At Risk for Over weight or Over weight
Little Rock School District	6001000	Watson Intermediate School	6001071	60.74%		19.26%	20.00%	39.26%
Little Rock School District	6001000	Western Hills Elem School	6001029	60.87%		17.39%	21.74%	39.13%
Little Rock School District	6001000	Williams Magnet Elem School	6001043	2.80%	68.22%	15.42%	13.55%	28.97%
Little Rock School District	6001000	Wilson Elementary School	6001044	65.07%		13.70%	21.23%	34.93%
Little Rock School District	6001000	Woodruff Elementary School	6001045	50.00%		23.96%	26.04%	50.00%
Lonoke School District	4301000	Lonoke Elementary School	4301027	54.03%		21.77%	24.19%	45.96%
Lonoke School District	4301000	Lonoke High School	4301029	57.47%		13.79%	28.74%	42.53%
Lonoke School District	4301000	Lonoke Middle School	4301028	48.26%		19.57%	32.17%	51.74%
Lonoke School District	4301000	Lonoke Primary School	4301030	58.46%		19.35%	22.18%	41.53%
Magazine School District	4202000	J D Leftwich High School	4202008	58.34%		19.44%	22.22%	41.66%
Magazine School District	4202000	Magazine Elementary School	4202007	59.05%		17.14%	23.81%	40.95%
Magnet Cove School Dist	3003000	Magnet Cove Elem School	3003013	5.16%	55.40%	16.43%	23.00%	39.43%
Magnet Cove School Dist	3003000	Magnet Cove High School	3003014	61.40%		17.54%	21.05%	38.59%
Magnolia School District	1402000	Central Elementary School	1402006	1.20%	51.92%	20.67%	26.20%	46.87%
Magnolia School District	1402000	East-West Elementary School	1402007	55.40%		23.55%	21.05%	44.60%
Magnolia School District	1402000	Magnolia High School	1402009	59.80%		19.10%	21.11%	40.21%
Magnolia School District	1402000	Magnolia Jr High School	1402008	64.04%		18.23%	17.73%	35.96%
Malvern School District	3004000	Malvern Elementary School	3004021	1.13%	53.85%	19.91%	25.11%	45.02%
Malvern School District	3004000	Malvern High School	3004023	55.89%		13.24%	30.88%	44.12%
Malvern School District	3004000	Malvern Junior High School	3004022	48.00%		20.00%	32.00%	52.00%
Malvern School District	3004000	Wilson Intermediate School	3004025	47.77%		19.75%	32.48%	52.23%
Mammoth Spring School District	2501000	Mammoth Spring Elem School	2501001	49.51%		19.42%	31.07%	50.49%
Mammoth Spring School District	2501000	Mammoth Spring High School	2501002	65.00%		13.33%	21.67%	35.00%
Manila School District	4712000	Manila Elementary School	4712043	2.24%	58.15%	14.06%	25.56%	39.62%
Manila School District	4712000	Manila High School	4712044	41.66%		27.56%	30.77%	58.33%
Mansfield School District	6606000	Mansfield Elementary School	6606060	4.88%	61.79%	11.38%	21.95%	33.33%
Mansfield School District	6606000	Mansfield High School	6606062	67.65%		32.35%		32.35%
Mansfield School District	6606000	Mansfield Middle School	6606061	6.45%	62.37%	18.28%	12.90%	31.18%
Marion School District	1804000	Avondale Elementary School	1804011	3.07%	66.67%	17.24%	13.03%	30.27%
Marion School District	1804000	Marion Elementary School	1804012	63.13%		14.96%	21.90%	36.86%
Marion School District	1804000	Marion High School	1804015	59.64%		16.79%	23.57%	40.36%
Marion School District	1804000	Marion Intermediate School	1804017	1.92%	57.09%	17.24%	23.75%	40.99%
Marion School District	1804000	Marion Junior High School	1804014	3.77%	57.53%	16.78%	21.92%	38.70%
Marion School District	1804000	Marion Middle School	1804016	1.80%	55.76%	15.47%	26.98%	42.45%
Marked Tree School District	5604000	Marked Tree Elementary School	5604015	53.66%		16.46%	29.88%	46.34%
Marked Tree School District	5604000	Marked Tree High School	5604017	43.84%		24.66%	31.51%	56.17%
Marmaduke School District	2803000	Marmaduke Elementary School	2803016	55.44%		13.04%	31.52%	44.56%
Marmaduke School District	2803000	Marmaduke High School	2803017	61.29%		16.13%	22.58%	38.71%
Marvell School District	5404000	Lucilia Wood Elementary Sch	5404006	55.26%		22.37%	22.37%	44.74%
Marvell School District	5404000	Marvell High School	5404032	57.29%		13.54%	29.17%	42.71%
Marvell School District	5404000	Marvell Primary School	5404030	61.41%		18.11%	20.47%	38.58%
Mayflower School District	2305000	Mayflower Elementary School	2305025	59.07%		22.28%	18.65%	40.93%
Mayflower School District	2305000	Mayflower High School	2305026	62.86%		17.14%	20.00%	37.14%
Mayflower School District	2305000	Mayflower Middle School	2305027	55.48%		19.35%	25.16%	44.51%
Maynard School District	6102000	Maynard Elementary School	6102005	3.76%	57.89%	20.30%	18.05%	38.35%
Maynard School District	6102000	Maynard High School	6102006	59.50%		15.19%	25.32%	40.51%
McCrory School District	7403000	McCrory Elementary School	7403012	52.88%		24.04%	23.08%	47.12%
McCrory School District	7403000	McCrory High School	7403013	47.56%		14.63%	37.80%	52.43%
McGehee School District	2105000	McGehee Elementary School	2105026	2.41%	58.28%	18.62%	20.69%	39.31%
McGehee School District	2105000	McGehee High School	2105028	51.04%		22.76%	26.21%	48.97%
Melbourne School District	3302000	Melbourne Elementary School	3302005	66.42%		18.32%	15.27%	33.59%
Melbourne School District	3302000	Melbourne High School	3302006	69.23%		17.95%	12.82%	30.77%
Melbourne School District	3302000	Mount Pleasant Elem School	3302010	75.93%		11.11%	12.96%	24.07%
Melbourne School District	3302000	Mount Pleasant High School	3302011	56.25%		18.75%	25.00%	43.75%
Mena School District	5703000	Hatfield Elementary School	5703005	47.83%		19.57%	32.61%	52.18%
Mena School District	5703000	Holly Harshman Elem School	5703010	57.04%		20.42%	22.54%	42.96%
Mena School District	5703000	Louise Durham Elem School	5703009	2.02%	62.90%	17.74%	17.34%	35.08%
Mena School District	5703000	Mena High School	5703012	62.40%		20.80%	16.80%	37.60%
Mena School District	5703000	Mena Middle School	5703011	62.04%		18.98%	18.98%	37.96%
Midland School District	3211000	Midland Elementary School	3211022	63.01%		15.07%	21.92%	36.99%
Midland School District	3211000	Midland High School	3211035	62.96%		14.81%	22.22%	37.03%
Mineral Springs School Dist	3104000	Mineral Springs Elem School	3104005	57.14%		15.97%	26.89%	42.86%
Mineral Springs School Dist	3104000	Mineral Springs High School	3104006	40.62%		14.06%	45.31%	59.37%
Mineral Springs School Dist	3104000	Saratoga Elementary School	3104021	48.57%		51.43%		51.43%
Mineral Springs School Dist	3104000	Saratoga High School	3104022	66.67%		33.33%		33.33%

School District	District LEA	School	School LEA	Under weight	Healthy Weight	At Risk for Over weight	Over weight	At Risk for Over weight or Over weight
Monticello School District	2203000	Monticello Elementary School	2203010	1.83%	61.77%	17.13%	19.27%	36.40%
Monticello School District	2203000	Monticello High School	2203012	59.26%		20.37%	20.37%	40.74%
Monticello School District	2203000	Monticello Intermediate School	2203014	53.80%		21.52%	24.68%	46.20%
Monticello School District	2203000	Monticello Middle School	2203011	59.93%		18.12%	21.95%	40.07%
Mount Ida School District	4902000	Mount Ida Elementary School	4902006	57.64%		15.28%	27.08%	42.36%
Mount Ida School District	4902000	Mount Ida High School	4902007	68.97%		15.52%	15.52%	31.04%
Mountain Home School District	0303000	Guy Berry Intermediate School	0303016	2.92%	59.85%	15.69%	21.53%	37.22%
Mountain Home School District	0303000	Mountain Home Jr High School	0303019	3.47%	69.11%	13.13%	14.29%	27.42%
Mountain Home School District	0303000	Mountain Home Kindergarten	0303018	67.83%		18.18%	13.99%	32.17%
Mountain Home School District	0303000	Mtn Home High Career Academ	0303703	64.58%		17.08%	18.33%	35.41%
Mountain Home School District	0303000	Nelson Wilks Herron Elem	0303013	1.63%	66.45%	14.01%	17.92%	31.93%
Mountain Home School District	0303000	Pinkston Middle School	0303014	57.27%		20.94%	21.79%	42.73%
Mountain Pine School District	2607000	Mountain Pine Elem School	2607046	62.07%		20.00%	17.93%	37.93%
Mountain Pine School District	2607000	Mountain Pine High School	2607047	70.49%		8.20%	21.31%	29.51%
Mountain View School District	6901000	Mountain View Elem School	6901005	1.56%	60.94%	14.58%	22.92%	37.50%
Mountain View School District	6901000	Mountain View High School	6901007	2.82%	50.85%	23.73%	22.60%	46.33%
Mountain View School District	6901000	Rural Special Elem School	6901011	72.73%		15.91%	11.36%	27.27%
Mountain View School District	6901000	Rural Special High School	6901012	70.97%		29.03%		29.03%
Mountain View School District	6901000	Timbo Elementary School	6901015	56.67%		11.67%	31.67%	43.34%
Mountain View School District	6901000	Timbo High School	6901016	64.00%		36.00%		36.00%
Mountainburg School District	1703000	Mountainburg Elem School	1703012	65.71%		16.43%	17.86%	34.29%
Mountainburg School District	1703000	Mountainburg High School	1703013	76.47%		23.53%		23.53%
Mountainburg School District	1703000	Mountainburg Middle School	1703022	71.13%		15.46%	13.40%	28.86%
Mt Vernon-Enola School Dist	2306000	Mt Vernon-Enola Elem School	2306029	63.55%		20.56%	15.89%	36.45%
Mt Vernon-Enola School Dist	2306000	Mt Vernon-Enola High School	2306030	65.12%		13.95%	20.93%	34.88%
Mulberry School District	1704000	Marvin Primary School	1704016	65.26%		10.53%	24.21%	34.74%
Mulberry School District	1704000	Millsap Intermediate School	1704022	65.00%		15.00%	20.00%	35.00%
Mulberry School District	1704000	Mulberry High School	1704017	50.00%		50.00%		50.00%
Mulberry School District	1704000	Pleasant View Junior High	1704018	60.98%		19.51%	19.51%	39.02%
Murfreesboro School District	5504000	Murfreesboro Elem School	5504014	59.26%		20.00%	20.74%	40.74%
Murfreesboro School District	5504000	Murfreesboro High School	5504015	59.18%		17.35%	23.47%	40.82%
N Little Rock School District	6002000	Amboy Elementary School	6002050	60.00%		17.86%	22.14%	40.00%
N Little Rock School District	6002000	Belwood Elementary School	6002053	60.66%		9.84%	29.51%	39.35%
N Little Rock School District	6002000	Boone Park Elementary School	6002054	65.33%		12.67%	22.00%	34.67%
N Little Rock School District	6002000	Crestwood Elementary School	6002055	3.16%	69.47%	13.16%	14.21%	27.37%
N Little Rock School District	6002000	Glenview Elementary School	6002056	61.67%		25.00%	13.33%	38.33%
N Little Rock School District	6002000	Indian Hills Elementary School	6002057	2.69%	69.23%	13.46%	14.62%	28.08%
N Little Rock School District	6002000	Lakewood Elementary School	6002058	73.00%		11.50%	15.50%	27.00%
N Little Rock School District	6002000	Lakewood Middle School	6002070	1.72%	63.79%	16.55%	17.93%	34.48%
N Little Rock School District	6002000	Lynch Drive Elementary School	6002060	62.31%		16.15%	21.54%	37.69%
N Little Rock School District	6002000	Meadow Park Elem School	6002061	59.80%		25.49%	14.71%	40.20%
N Little Rock School District	6002000	NLR High School-East Campus	6002075	62.91%		18.54%	18.54%	37.08%
N Little Rock School District	6002000	N Heights Elementary School	6002063	2.53%	61.11%	13.64%	22.73%	36.37%
N Little Rock School District	6002000	Park Hill Elementary School	6002064	4.23%	53.52%	19.01%	23.24%	42.25%
N Little Rock School District	6002000	Pike View Elementary School	6002065	58.78%		25.19%	16.03%	41.22%
N Little Rock School District	6002000	Poplar Street Middle School	6002059	1.92%	56.64%	17.83%	23.60%	41.43%
N Little Rock School District	6002000	Ridge Road Charter Middle Sch	6002702	58.10%		20.11%	21.79%	41.90%
N Little Rock School District	6002000	Rose City Middle School	6002077	52.00%		18.67%	29.33%	48.00%
N Little Rock School District	6002000	Seventh Street Elem School	6002069	63.93%		16.46%	19.62%	36.08%
Nashville School District	3105000	Nashville Elementary School	3105009	65.76%		19.02%	15.22%	34.24%
Nashville School District	3105000	Nashville High School	3105011	69.12%		11.76%	19.12%	30.88%
Nashville School District	3105000	Nashville Junior High School	3105010	76.67%		23.33%		23.33%
Nashville School District	3105000	Nashville Primary School	3105012	60.49%		18.88%	20.63%	39.51%
Nemo Vista School District	1503000	Nemo Vista Elementary School	1503016	63.70%		19.26%	17.04%	36.30%
Nemo Vista School District	1503000	Nemo Vista High School	1503017	73.58%		15.09%	11.32%	26.41%
Nettleton School District	1611000	Fox Meadow Elementary	1611039	3.29%	63.16%	15.79%	17.76%	33.55%
Nettleton School District	1611000	Fox Meadow Interm Center	1611045	5.19%	61.48%	15.56%	17.78%	33.34%
Nettleton School District	1611000	Nettleton Central Elementary	1611044	68.87%		13.21%	17.92%	31.13%
Nettleton School District	1611000	Nettleton High School	1611042	62.09%		13.07%	24.84%	37.91%
Nettleton School District	1611000	Nettleton Intermediate Center	1611043	3.43%	56.00%	19.43%	21.14%	40.57%
Nettleton School District	1611000	Nettleton Junior High School	1611041	2.99%	49.70%	28.14%	19.16%	47.30%
Nettleton School District	1611000	Raider Open Door Acad Charter	1611702	44.00%		56.00%		56.00%
Nettleton School District	1611000	University Hghts Elem School	1611040	67.33%		19.80%	12.87%	32.67%

School District	District LEA	School	School LEA	Under weight	Healthy Weight	At Risk for Over weight	Over weight	At Risk for Over weight or Over weight
Nevada School District	5008000	Nevada Elementary School	5008013	59.37%		14.84%	25.78%	40.62%
Nevada School District	5008000	Nevada High School	5008014	50.00%		17.86%	32.14%	50.00%
Newport School District	3403000	Castleberry Elementary School	3403011	1.97%	58.27%	18.90%	20.87%	39.77%
Newport School District	3403000	Gibbs Albright Elem School	3403010	54.23%		17.51%	28.25%	45.76%
Newport School District	3403000	Newport High School	3403013	59.63%		15.60%	24.77%	40.37%
Newport School District	3403000	Newport Junior High School	3403012	59.69%		15.50%	24.81%	40.31%
Norfolk School District	0304000	Norfolk Elementary School	0304021	72.16%		9.28%	18.56%	27.84%
Norfolk School District	0304000	Norfolk High School	0304022	57.75%		22.54%	19.72%	42.26%
Norphlet School District	7006000	Norphlet Elementary School	7006035	53.12%		20.31%	26.56%	46.87%
Norphlet School District	7006000	Norphlet High School	7006036	59.02%		22.95%	18.03%	40.98%
Omaha School District	0504000	Omaha Elementary School	0504022	54.62%		26.15%	19.23%	45.38%
Omaha School District	0504000	Omaha High School	0504023	62.27%		24.53%	13.21%	37.74%
Osceola School District	4713000	Academic Center of Excellence	4713702	3.45%	54.19%	19.70%	22.66%	42.36%
Osceola School District	4713000	East Elementary School	4713047	9.09%	53.03%	21.21%	16.67%	37.88%
Osceola School District	4713000	North Elementary School	4713052	52.73%		22.73%	24.55%	47.28%
Osceola School District	4713000	Osceola High School	4713051	66.67%		16.67%	16.67%	33.34%
Osceola School District	4713000	Osceola Middle School	4713050	50.51%		21.65%	27.84%	49.49%
Osceola School District	4713000	West Elementary School	4713048	68.33%		11.67%	20.00%	31.67%
Ouachita River School District	5706000	Acorn Elementary School	5706001	77.77%		12.70%	9.52%	22.22%
Ouachita River School District	5706000	Acorn High School	5706002	65.51%		17.24%	17.24%	34.48%
Ouachita River School District	5706000	Oden Maddox Elem School	5706010	73.91%		10.87%	15.22%	26.09%
Ouachita School District	3005000	Ouachita Elementary School	3005029	58.55%		21.05%	20.39%	41.44%
Ouachita School District	3005000	Ouachita High School	3005030	70.17%		19.30%	10.53%	29.83%
Ozark Mountain School District	6505000	Bruno-Pyatt Elementary School	6505012	54.55%		22.73%	22.73%	45.46%
Ozark Mountain School District	6505000	Bruno-Pyatt High School	6505011	68.09%		17.02%	14.89%	31.91%
Ozark Mountain School District	6505000	St Joe Elementary School	6505009	67.74%		32.25%		32.25%
Ozark Mountain School District	6505000	St Joe High School	6505010	38.10%		61.91%		61.91%
Ozark Mountain School District	6505000	Western Grove Elem School	6505013	66.00%		16.00%	18.00%	34.00%
Ozark Mountain School District	6505000	Western Grove High School	6505014	70.58%		29.41%		29.41%
Ozark School District	2404000	Elgin B Milton Elem School	2404015	53.31%		24.38%	22.31%	46.69%
Ozark School District	2404000	Ozark High School	2404017	60.80%		15.20%	24.00%	39.20%
Ozark School District	2404000	Ozark Junior High School	2404016	54.28%		17.86%	27.86%	45.72%
Ozark School District	2404000	Ozark Kindergarten School	2404005	4.11%	70.55%	14.38%	10.96%	25.34%
Ozark School District	2404000	Ozark Middle School	2404004	57.14%		21.43%	21.43%	42.86%
Palestine-Wheatley Sch Dist	6205000	Palestine-Wheatley Elem Sch	6205027	40.38%		19.23%	40.38%	59.61%
Palestine-Wheatley Sch Dist	6205000	Palestine-Wheatley Middle Sch	6205031	42.11%		22.37%	35.53%	57.90%
Palestine-Wheatley Sch Dist	6205000	Palestine-Wheatley Senior High	6205028	46.43%		17.86%	35.71%	53.57%
Pangburn School District	7309000	Pangburn Elementary School	7309038	66.17%		17.91%	15.92%	33.83%
Pangburn School District	7309000	Pangburn High School	7309039	56.67%		18.89%	24.44%	43.33%
Paragould School District	2808000	Baldwin Elementary School	2808024	67.55%		14.91%	17.54%	32.45%
Paragould School District	2808000	Oak Grove Elementary School	2808041	2.00%	57.20%	13.20%	27.60%	40.80%
Paragould School District	2808000	Oak Grove Middle School	2808028	45.07%		20.19%	34.74%	54.93%
Paragould School District	2808000	Paragould High School	2808043	2.54%	54.82%	14.21%	28.43%	42.64%
Paragould School District	2808000	Paragould Junior High	2808042	47.81%		23.41%	28.78%	52.19%
Paragould School District	2808000	Woodrow Wilson Elem School	2808027	63.13%		15.64%	21.23%	36.87%
Paris School District	4203000	Paris Elementary School	4203011	58.17%		22.05%	19.77%	41.82%
Paris School District	4203000	Paris High School	4203012	56.47%		18.82%	24.71%	43.53%
Paris School District	4203000	Paris Middle School	4203013	3.51%	61.40%	16.37%	18.71%	35.08%
Parkers Chapel School Dist	7007000	Parkers Chapel Elem School	7007039	68.31%		16.94%	14.75%	31.69%
Parkers Chapel School Dist	7007000	Parkers Chapel High School	7007040	68.18%		14.55%	17.27%	31.82%
Pea Ridge School District	0407000	Pea Ridge Elementary School	0407026	1.91%	64.47%	15.53%	18.09%	33.62%
Pea Ridge School District	0407000	Pea Ridge High School	0407027	66.27%		19.28%	14.46%	33.74%
Pea Ridge School District	0407000	Pea Ridge Middle School	0407028	65.26%		16.84%	17.89%	34.73%
Perryville School District	5303000	Perryville Elementary School	5303010	4.78%	62.12%	16.38%	16.72%	33.10%
Perryville School District	5303000	Perryville High School	5303011	74.32%		14.86%	10.81%	25.67%
Piggott School District	1104000	Piggott Elementary School	1104017	2.12%	60.78%	14.13%	22.97%	37.10%
Piggott School District	1104000	Piggott High School	1104018	51.14%		21.37%	27.48%	48.85%
Pine Bluff School District	3505000	Belair Elementary School	3505025	54.55%		21.82%	23.64%	45.46%
Pine Bluff School District	3505000	Broadmoor Elementary School	3505026	55.93%		20.38%	23.70%	44.08%
Pine Bluff School District	3505000	Greenville Elementary School	3505030	58.90%		19.63%	21.47%	41.10%
Pine Bluff School District	3505000	Jack Robey Jr High School	3505044	1.45%	54.34%	18.50%	25.72%	44.22%
Pine Bluff School District	3505000	Oak Park Elementary School	3505034	63.50%		16.93%	19.58%	36.51%
Pine Bluff School District	3505000	Pine Bluff High School	3505042	2.06%	60.91%	16.46%	20.58%	37.04%
Pine Bluff School District	3505000	Southeast Middle School	3505041	51.95%		18.18%	29.87%	48.05%
Pine Bluff School District	3505000	Southwood Elementary School	3505037	67.80%		14.12%	18.08%	32.20%
Pine Bluff School District	3505000	Thirty-Fourth Ave Elem Sch	3505036	60.38%		21.70%	17.92%	39.62%
Pine Bluff School District	3505000	W T Cheney Elementary School	3505046	59.35%		14.44%	26.20%	40.64%

School District	District LEA	School	School LEA	Under weight	Healthy Weight	At Risk for Over weight	Over weight	At Risk for Over weight or Over weight
Pocahontas School District	6103000	Alma Spikes Elementary School	6103009	1.85%	62.22%	16.67%	19.26%	35.93%
Pocahontas School District	6103000	Pocahontas High School	6103010		58.76%	16.49%	24.74%	41.23%
Pocahontas School District	6103000	Pocahontas Junior High School	6103012		64.00%	12.80%	23.20%	36.00%
Pocahontas School District	6103000	Pocahontas Upper Elem School	6103011		55.56%	16.87%	27.57%	44.44%
Pottsville School District	5804000	Pottsville Elementary School	5804013		67.65%	17.65%	14.71%	32.36%
Pottsville School District	5804000	Pottsville High School	5804014		68.97%	20.69%	10.34%	31.03%
Pottsville School District	5804000	Pottsville Junior High School	5804016		54.31%	25.86%	19.83%	45.69%
Pottsville School District	5804000	Pottsville Middle Grade	5804015	2.90%	65.22%	12.56%	19.32%	31.88%
Poyen School District	2703000	Poyen Elementary School	2703009		59.05%	22.05%	18.90%	40.95%
Poyen School District	2703000	Poyen High School	2703010		53.85%	30.77%	15.38%	46.15%
Prairie Grove School District	7206000	Prairie Grove Elem School	7206035	2.37%	69.15%	17.63%	10.85%	28.48%
Prairie Grove School District	7206000	Prairie Grove High School	7206036		59.52%	22.62%	17.86%	40.48%
Prairie Grove School District	7206000	Prairie Grove Middle School	7206038	2.94%	66.47%	18.82%	11.76%	30.58%
Prescott School District	5006000	McRae Middle School	5006023		49.58%	22.69%	27.73%	50.42%
Prescott School District	5006000	Prescott Elementary School	5006022		63.33%	17.14%	19.52%	36.66%
Prescott School District	5006000	Prescott High School	5006024		54.29%	27.14%	18.57%	45.71%
Pulaski Co Spec School Dist	6003000	Arnold Drive Elementary School	6003137	5.45%	80.91%	13.64%		13.64%
Pulaski Co Spec School Dist	6003000	Baker Interdistrict Elem Sch	6003092	3.20%	72.80%	14.80%	9.20%	24.00%
Pulaski Co Spec School Dist	6003000	Bates Elementary School	6003146		62.12%	13.64%	24.24%	37.88%
Pulaski Co Spec School Dist	6003000	Bayou Meto Elementary School	6003094		67.50%	13.12%	19.38%	32.50%
Pulaski Co Spec School Dist	6003000	Cato Elementary School	6003129		61.43%	15.69%	22.88%	38.57%
Pulaski Co Spec School Dist	6003000	Clinton Elementary School	6003095	2.31%	60.73%	15.84%	21.12%	36.96%
Pulaski Co Spec School Dist	6003000	College Station Elem School	6003135		61.62%	18.18%	20.20%	38.38%
Pulaski Co Spec School Dist	6003000	Crystal Hill Elementary	6003093	1.78%	61.83%	18.05%	18.34%	36.39%
Pulaski Co Spec School Dist	6003000	Fuller Middle School	6003120	2.54%	57.34%	17.23%	22.88%	40.11%
Pulaski Co Spec School Dist	6003000	Harris Elementary School	6003102		50.56%	22.47%	26.97%	49.44%
Pulaski Co Spec School Dist	6003000	Jacksonville Elementary School	6003103		64.55%	12.27%	23.18%	35.45%
Pulaski Co Spec School Dist	6003000	Jacksonville High School	6003123		59.18%	21.43%	19.39%	40.82%
Pulaski Co Spec School Dist	6003000	Jacksonville Middle Boys Sch	6003118		51.00%	22.82%	26.17%	48.99%
Pulaski Co Spec School Dist	6003000	Jacksonville Middle Girls Sch	6003116		45.41%	19.90%	34.69%	54.59%
Pulaski Co Spec School Dist	6003000	Joe T Robinson Elem School	6003110		62.20%	19.69%	18.11%	37.80%
Pulaski Co Spec School Dist	6003000	Joe T Robinson High School	6003127		66.67%	21.33%	12.00%	33.33%
Pulaski Co Spec School Dist	6003000	Joe T Robinson Middle School	6003143	3.78%	63.24%	17.30%	15.68%	32.98%
Pulaski Co Spec School Dist	6003000	Landmark Elementary School	6003104	3.92%	56.21%	13.07%	26.80%	39.87%
Pulaski Co Spec School Dist	6003000	Lawson Elementary School	6003105		67.59%	15.17%	17.24%	32.41%
Pulaski Co Spec School Dist	6003000	Maumelle Middle School	6003149	1.45%	57.80%	16.47%	24.28%	40.75%
Pulaski Co Spec School Dist	6003000	Murrell Taylor Elem School	6003141		64.55%	12.70%	22.75%	35.45%
Pulaski Co Spec School Dist	6003000	North Pulaski High School	6003136		63.71%	10.48%	25.81%	36.29%
Pulaski Co Spec School Dist	6003000	Northwood Middle School	6003140	2.24%	59.29%	18.27%	20.19%	38.46%
Pulaski Co Spec School Dist	6003000	Oak Grove Elementary School	6003108	4.31%	62.07%	19.83%	13.79%	33.62%
Pulaski Co Spec School Dist	6003000	Oak Grove High School	6003126		60.56%	16.90%	22.54%	39.44%
Pulaski Co Spec School Dist	6003000	Oakbrooke Elementary School	6003139	3.88%	67.48%	13.59%	15.05%	28.64%
Pulaski Co Spec School Dist	6003000	Pine Forest Elementary School	6003142	2.43%	75.73%	11.17%	10.68%	21.85%
Pulaski Co Spec School Dist	6003000	Pinewood Elementary School	6003130		62.79%	18.60%	18.60%	37.20%
Pulaski Co Spec School Dist	6003000	Scott Elementary School	6003111		56.07%	24.24%	19.70%	43.94%
Pulaski Co Spec School Dist	6003000	Sherwood Elementary School	6003112	3.18%	69.43%	11.46%	15.92%	27.38%
Pulaski Co Spec School Dist	6003000	Sylvan Hills Elementary School	6003113		66.91%	15.79%	17.29%	33.08%
Pulaski Co Spec School Dist	6003000	Sylvan Hills High School	6003128		69.51%	14.18%	16.31%	30.49%
Pulaski Co Spec School Dist	6003000	Sylvan Hills Middle School	6003122	1.81%	59.34%	18.98%	19.88%	38.86%
Pulaski Co Spec School Dist	6003000	Tolleson Elementary School	6003106		70.83%	13.33%	15.83%	29.16%
Pulaski Co Spec School Dist	6003000	Warren Dupree Elem School	6003099		62.83%	15.04%	22.12%	37.16%
Pulaski Co Spec School Dist	6003000	Wilbur D Mills High School	6003125		64.49%	13.08%	22.43%	35.51%
Quitman School District	1203000	Quitman Elementary School	1203010		58.99%	17.42%	23.60%	41.02%
Quitman School District	1203000	Quitman High School	1203011		63.04%	17.39%	19.57%	36.96%
Rector School District	1106000	Rector Elementary School	1106022		53.94%	18.79%	27.27%	46.06%
Rector School District	1106000	Rector High School	1106023		60.47%	15.12%	24.42%	39.54%
Riverside School District	1613000	Riverside East Elem School	1613010		63.42%	24.39%	12.20%	36.59%
Riverside School District	1613000	Riverside High School	1613032		68.42%	31.58%		31.58%
Riverside School District	1613000	Riverside Jr High School	1613011		69.23%	17.95%	12.82%	30.77%
Riverside School District	1613000	Riverside West Elem School	1613031		63.22%	17.24%	19.54%	36.78%
Riverview School District	7307000	Judsonia Elementary School	7307026		71.43%	15.79%	12.78%	28.57%
Riverview School District	7307000	Kensett Elementary School	7307030	4.93%	53.52%	18.31%	23.24%	41.55%
Riverview School District	7307000	Riverview High School	7307032		51.35%	18.92%	29.73%	48.65%
Riverview School District	7307000	Riverview Junior High School	7307033		60.47%	25.58%	13.95%	39.53%

School District	District LEA	School	School LEA	Under weight	Healthy Weight	At Risk for Over weight	Over weight	At Risk for Over weight or Over weight
Rogers School District	0405000	Bellview Elementary	0405047	1.89%	60.00%	24.53%	13.58%	38.11%
Rogers School District	0405000	Bonnie Grimes Elem School	0405041	58.24%		16.48%	25.27%	41.75%
Rogers School District	0405000	Eastside Elementary School	0405031	63.69%		20.00%	16.32%	36.32%
Rogers School District	0405000	Elmwood Jr High School	0405037	1.57%	61.94%	18.37%	18.11%	36.48%
Rogers School District	0405000	Elza R Tucker Elem School	0405050	72.24%		16.37%	11.39%	27.76%
Rogers School District	0405000	Frank Tillery Elem School	0405043	63.38%		13.38%	23.24%	36.62%
Rogers School District	0405000	Garfield Elementary School	0405032	69.81%		20.75%	9.43%	30.18%
Rogers School District	0405000	Grace Hill Elementary School	0405040	60.46%		19.19%	20.35%	39.54%
Rogers School District	0405000	Joe Mathias Elementary School	0405044	3.93%	58.99%	12.92%	24.16%	37.08%
Rogers School District	0405000	Jones Elementary School	0405049	50.00%		20.73%	29.27%	50.00%
Rogers School District	0405000	Kirksey Middle School	0405045	1.67%	53.33%	21.19%	23.81%	45.00%
Rogers School District	0405000	Lingle Middle School	0405046	2.08%	53.71%	17.51%	26.71%	44.22%
Rogers School District	0405000	Lowell Elementary School	0405033	68.14%		14.71%	17.16%	31.87%
Rogers School District	0405000	Northside Elementary School	0405034	65.17%		13.55%	21.29%	34.84%
Rogers School District	0405000	Oakdale Jr High School	0405039	2.40%	58.95%	16.81%	21.83%	38.64%
Rogers School District	0405000	Old Wire Elementary School	0405051	55.49%		20.94%	23.56%	44.50%
Rogers School District	0405000	Reagan Elementary School	0405042	55.68%		26.14%	18.18%	44.32%
Rogers School District	0405000	Rogers HS Sophomore Campus	0405038	0.82%	61.89%	16.55%	20.75%	37.30%
Rogers School District	0405000	Westside Elementary School	0405036	3.47%	64.74%	19.08%	12.72%	31.80%
Rose Bud School District	7310000	Rose Bud Elementary School	7310042	54.03%		20.85%	25.12%	45.97%
Rose Bud School District	7310000	Rose Bud High School	7310043	60.66%		20.49%	18.85%	39.34%
Russellville School District	5805000	Center Valley Elem School	5805025	62.11%		15.26%	22.63%	37.89%
Russellville School District	5805000	Crawford Elementary School	5805017	53.92%		20.59%	25.49%	46.08%
Russellville School District	5805000	Dwight Elementary School	5805018	66.66%		13.16%	20.18%	33.34%
Russellville School District	5805000	London Elementary School	5805019	57.95%		18.18%	23.86%	42.04%
Russellville School District	5805000	Oakland Heights Elem School	5805020	59.54%		18.14%	22.33%	40.47%
Russellville School District	5805000	Russellville High School	5805024	56.89%		21.98%	21.12%	43.10%
Russellville School District	5805000	Russellville Jr High School	5805023	1.36%	50.14%	22.49%	26.02%	48.51%
Russellville School District	5805000	Russellville Middle School	5805022	58.11%		20.65%	21.24%	41.89%
Russellville School District	5805000	Sequoyah Elementary School	5805021	2.42%	64.73%	14.01%	18.84%	32.85%
Salem School District	2502000	Salem Elementary School	2502005	67.11%		14.22%	18.67%	32.89%
Salem School District	2502000	Salem High School	2502006	52.54%		13.56%	33.90%	47.46%
Scranton School District	4204000	Scranton Elementary School	4204016	65.87%		16.67%	17.46%	34.13%
Scranton School District	4204000	Scranton High School	4204019	71.70%		9.43%	18.87%	28.30%
Searcy County School District	6502000	Leslie Elementary School	6502001	60.94%		14.06%	25.00%	39.06%
Searcy County School District	6502000	Marshall Elementary School	6502005	60.09%		13.46%	26.44%	39.90%
Searcy County School District	6502000	Marshall High School	6502006	59.26%		16.67%	24.07%	40.74%
Searcy School District	7311000	AHLF Junior High School	7311051	62.03%		19.79%	18.18%	37.97%
Searcy School District	7311000	McRae Elementary School	7311047	4.08%	59.59%	19.59%	16.73%	36.32%
Searcy School District	7311000	Searcy High School	7311052	67.90%		12.35%	19.75%	32.10%
Searcy School District	7311000	Sidney Deener Elem School	7311046	67.49%		15.76%	16.75%	32.51%
Searcy School District	7311000	Southwest Middle School	7311050	67.07%		14.37%	18.56%	32.93%
Searcy School District	7311000	Westside Elementary School	7311053	3.17%	74.21%	14.03%	8.60%	22.63%
Sheridan School District	2705000	East End Elementary School	2705018	67.43%		14.39%	18.18%	32.57%
Sheridan School District	2705000	East End Intermediate School	2705024	61.81%		19.10%	19.10%	38.20%
Sheridan School District	2705000	Sheridan Elementary School	2705019	66.30%		16.02%	17.68%	33.70%
Sheridan School District	2705000	Sheridan High School	2705021	59.55%		18.32%	22.14%	40.46%
Sheridan School District	2705000	Sheridan Intermediate School	2705023	52.83%		18.24%	28.93%	47.17%
Sheridan School District	2705000	Sheridan Middle School	2705020	2.63%	54.92%	19.91%	22.54%	42.45%
Shirley School District	7104000	Shirley Elementary School	7104014	68.47%		20.72%	10.81%	31.53%
Shirley School District	7104000	Shirley High School	7104015	78.57%		21.42%		21.42%
Siloam Springs School District	0406000	Delbert Pete & Pat Allen Elem	0406048	3.41%	63.26%	14.39%	18.94%	33.33%
Siloam Springs School District	0406000	Northside Elementary School	0406046	2.97%	68.03%	16.73%	12.27%	29.00%
Siloam Springs School District	0406000	Siloam Springs High School	0406050	60.19%		20.38%	19.43%	39.81%
Siloam Springs School District	0406000	Siloam Springs Middle School	0406049	2.21%	56.94%	18.11%	22.74%	40.85%
Siloam Springs School District	0406000	Southside Elementary School	0406047	2.96%	63.33%	16.67%	17.04%	33.71%
Sloan-Hendrix School Dist	3806000	Sloan-Hendrix Elem School	3806018	61.47%		11.93%	26.61%	38.54%
Sloan-Hendrix School Dist	3806000	Sloan-Hendrix High School	3806019	61.45%		18.07%	20.48%	38.55%
Sloan-Hendrix School Dist	3806000	Sloan-Hendrix Middle School	3806020	50.00%		17.50%	32.50%	50.00%
Smackover School District	7008000	Smackover Elementary School	7008043	55.25%		18.95%	25.81%	44.76%
Smackover School District	7008000	Smackover High School	7008045	63.89%		15.74%	20.37%	36.11%
S Conway Co School District	1507000	Morrilton Elementary School	1507029	61.31%		18.25%	20.44%	38.69%
S Conway Co School District	1507000	Morrilton Intermediate School	1507031	2.38%	50.95%	17.14%	29.52%	46.66%
S Conway Co School District	1507000	Morrilton Junior High School	1507037	49.63%		19.26%	31.11%	50.37%
S Conway Co School District	1507000	Morrilton Primary School	1507032	65.81%		12.26%	21.94%	34.20%
S Conway Co School District	1507000	Morrilton Sr High School	1507036	61.97%		16.90%	21.13%	38.03%

School District	District LEA	School	School LEA	Under weight	Healthy Weight	At Risk for Over weight	Over weight	At Risk for Over weight or Over weight
S Miss County School Dist	4706000	Keiser Elementary School	4706059	56.95%		20.83%	22.22%	43.05%
S Miss County School Dist	4706000	Luxora Elementary School	4706039	53.01%		22.89%	24.10%	46.99%
S Miss County School Dist	4706000	Rivercrest High School	4706066	57.69%		14.10%	28.21%	42.31%
S Miss County School Dist	4706000	Rivercrest Junior High School	4706068	49.37%		21.52%	29.11%	50.63%
S Miss County School Dist	4706000	Wilson Elementary School	4706061	54.00%		22.00%	24.00%	46.00%
S Miss County School Dist	4706000	Wilson Middle School	4706062	52.46%		14.75%	32.79%	47.54%
South Side School District	7105000	South Side Elementary School	7105018	57.75%		21.13%	21.13%	42.26%
South Side School District	7105000	South Side High School	7105019	59.49%		17.72%	22.78%	40.50%
Southside School District	3209000	Southside Elementary School	3209038	3.91%	63.35%	14.23%	18.51%	32.74%
Southside School District	3209000	Southside High School	3209039	55.05%		20.22%	24.72%	44.94%
Southside School District	3209000	Southside Middle School	3209041	2.53%	53.03%	20.20%	24.24%	44.44%
Spring Hill School District	2906000	Spring Hill Elementary School	2906025	64.38%		11.64%	23.97%	35.61%
Spring Hill School District	2906000	Spring Hill High School	2906026	55.10%		22.45%	22.45%	44.90%
Springdale School District	7207000	Bayyari Elementary School	7207059	57.58%		22.94%	19.48%	42.42%
Springdale School District	7207000	Bernice Young Elementary	7207057	69.38%		17.22%	13.40%	30.62%
Springdale School District	7207000	Central Junior High School	7207047	63.44%		20.22%	16.34%	36.56%
Springdale School District	7207000	East Elementary School	7207065	3.77%	61.89%	17.36%	16.98%	34.34%
Springdale School District	7207000	Elmdale Elementary School	7207040	49.58%		20.76%	29.66%	50.42%
Springdale School District	7207000	George Elementary School	7207053	61.67%		13.33%	25.00%	38.33%
Springdale School District	7207000	George Junior High School	7207060	2.41%	50.80%	22.99%	23.80%	46.79%
Springdale School District	7207000	Har-Ber High School	7207062	2.79%	67.73%	16.33%	13.15%	29.48%
Springdale School District	7207000	Harp Elementary School	7207058	55.04%		22.15%	22.82%	44.97%
Springdale School District	7207000	Helen Tyson Middle School	7207055	1.56%	56.10%	18.18%	24.16%	42.34%
Springdale School District	7207000	Hellstern Middle School	7207061	1.53%	56.75%	16.26%	25.46%	41.72%
Springdale School District	7207000	Hunt Elementary School	7207063	67.18%		21.72%	11.11%	32.83%
Springdale School District	7207000	J O Kelly Middle School	7207054	1.29%	52.84%	18.56%	27.32%	45.88%
Springdale School District	7207000	John Tyson Elementary School	7207044	1.99%	57.77%	17.53%	22.71%	40.24%
Springdale School District	7207000	Jones Elementary School	7207041	55.61%		17.56%	26.83%	44.39%
Springdale School District	7207000	Parson Hills Elem School	7207050	55.46%		21.85%	22.69%	44.54%
Springdale School District	7207000	Robert E Lee Elem School	7207042	2.63%	60.53%	14.21%	22.63%	36.84%
Springdale School District	7207000	Southwest Junior High School	7207048	54.57%		20.92%	24.51%	45.43%
Springdale School District	7207000	Springdale High School	7207049	58.56%		20.83%	20.60%	41.43%
Springdale School District	7207000	Thurman G Smith Elem School	7207051	63.10%		17.71%	19.19%	36.90%
Springdale School District	7207000	Turnbow Elementary School	7207064	2.02%	63.71%	14.92%	19.35%	34.27%
Springdale School District	7207000	Walker Elementary School	7207052	68.34%		22.61%	9.05%	31.66%
Springdale School District	7207000	Westwood Elementary School	7207046	57.40%		20.18%	22.42%	42.60%
Springdale School District	7207000	Willis Shaw Elementary Sch	7207066	61.40%		19.53%	19.07%	38.60%
Star City School District	4003000	Brown Elementary School	4003014	1.98%	54.70%	20.30%	23.02%	43.32%
Star City School District	4003000	Star City High School	4003016	54.89%		18.80%	26.32%	45.12%
Star City School District	4003000	Star City Middle School	4003015	2.13%	56.60%	20.00%	21.28%	41.28%
Stephens School District	5206000	Stephens Elementary School	5206032	57.47%		21.84%	20.69%	42.53%
Stephens School District	5206000	Stephens High School	5206033	78.18%		12.73%	9.09%	21.82%
Strong-Huttig School District	7009000	Gardner-Strong Elem School	7009048	57.15%		12.99%	29.87%	42.86%
Strong-Huttig School District	7009000	Huttig Elementary School	7009023	60.00%		40.00%		40.00%
Strong-Huttig School District	7009000	Strong High School	7009049	46.67%		24.44%	28.89%	53.33%
Strong-Huttig School District	7009000	Strong-Huttig Middle School	7009025	44.44%		16.67%	38.89%	55.56%
Stuttgart School District	0104000	Meekins Middle School	0104023	51.47%		19.85%	28.68%	48.53%
Stuttgart School District	0104000	Park Avenue Elementary School	0104021	2.16%	62.70%	14.59%	20.54%	35.13%
Stuttgart School District	0104000	Stuttgart High School	0104025	55.74%		21.31%	22.95%	44.26%
Stuttgart School District	0104000	Stuttgart Junior High School	0104026	56.66%		21.33%	22.00%	43.33%
Texarkana School District	4605000	Arkansas High School	4605026	63.44%		13.44%	23.12%	36.56%
Texarkana School District	4605000	College Hill Elementary School	4605019	72.00%		13.33%	14.67%	28.00%
Texarkana School District	4605000	College Hill Middle	4605024	3.42%	52.56%	17.95%	26.07%	44.02%
Texarkana School District	4605000	Edward D Trice Elem School	4605027	60.00%		16.61%	23.39%	40.00%
Texarkana School District	4605000	Fairview Elementary School	4605020	4.29%	55.83%	19.02%	20.86%	39.88%
Texarkana School District	4605000	North Heights Jr High School	4605025	64.53%		14.72%	20.75%	35.47%
Texarkana School District	4605000	Union Elementary School	4605022	64.71%		20.26%	15.03%	35.29%
Texarkana School District	4605000	Vera Kilpatrick Elem School	4605021	2.22%	65.33%	16.89%	15.56%	32.45%
Trumann School District	5605000	Cedar Park Elementary School	5605021	1.67%	57.50%	19.17%	21.67%	40.84%
Trumann School District	5605000	Central Elementary School	5605001	66.67%		20.29%	13.04%	33.33%
Trumann School District	5605000	Trumann High School	5605023	2.58%	56.70%	13.40%	27.32%	40.72%
Turrell School District	1805000	Turrell Elementary School	1805020	61.44%		18.07%	20.48%	38.55%
Turrell School District	1805000	Turrell High School	1805021	46.43%		21.43%	32.14%	53.57%

School District	District LEA	School	School LEA	Under weight	Healthy Weight	At Risk for Over weight	Over weight	At Risk for Over weight or Over weight
Twin Rivers School District	6806000	Oak Ridge Central Elem School	6806013	65.12%		13.95%	20.93%	34.88%
Twin Rivers School District	6806000	Oak Ridge Central High School	6806014	56.00%		44.00%		44.00%
Twin Rivers School District	6806000	Williford Elementary School	6806018	67.86%		17.86%	14.29%	32.15%
Twin Rivers School District	6806000	Williford High School	6806019	54.17%		45.83%		45.83%
Two Rivers School District	7510000	Fourche Valley Elem School	7510016	69.70%		30.30%		30.30%
Two Rivers School District	7510000	Ola Elementary School	7510024	55.91%		19.69%	24.41%	44.10%
Two Rivers School District	7510000	Ola High School	7510025	50.00%		21.21%	28.79%	50.00%
Two Rivers School District	7510000	Plainview-Rover Elem School	7510028	69.12%		13.24%	17.65%	30.89%
Two Rivers School District	7510000	Plainview-Rover High School	7510029	69.70%		30.30%		30.30%
Valley Springs School District	0505000	Valley Springs Elem School	0505026	75.36%		9.00%	15.64%	24.64%
Valley Springs School District	0505000	Valley Springs High School	0505027	84.85%		15.15%		15.15%
Valley Springs School District	0505000	Valley Springs Middle School	0505028	66.98%		15.09%	17.92%	33.01%
Valley View School District	1612000	Valley View Elementary School	1612047	4.34%	65.92%	15.76%	13.99%	29.75%
Valley View School District	1612000	Valley View High School	1612048	75.37%		14.29%	10.34%	24.63%
Van Buren School District	1705000	Butterfield Junior High School	1705026	59.79%		15.87%	24.34%	40.21%
Van Buren School District	1705000	Central Middle School	1705028	4.40%	49.69%	19.50%	26.42%	45.92%
Van Buren School District	1705000	City Heights Elementary School	1705020	62.74%		19.61%	17.65%	37.26%
Van Buren School District	1705000	Coleman Junior High School	1705031	64.22%		16.51%	19.27%	35.78%
Van Buren School District	1705000	J J Iazard Elementary School	1705025	56.90%		15.52%	27.59%	43.11%
Van Buren School District	1705000	James R Tate Elem School	1705029	55.37%		22.58%	22.04%	44.62%
Van Buren School District	1705000	King Elementary School	1705022	61.34%		18.49%	20.17%	38.66%
Van Buren School District	1705000	Northridge Middle School	1705033	69.00%		11.00%	20.00%	31.00%
Van Buren School District	1705000	Parkview Elementary School	1705030	72.94%		18.81%	8.26%	27.07%
Van Buren School District	1705000	Rena Elementary School	1705032	67.56%		16.00%	16.44%	32.44%
Van Buren School District	1705000	Van Buren High School	1705027	59.02%		15.60%	25.38%	40.98%
Van Cove School District	5704000	Van Cove Elementary School	5704019	56.99%		12.90%	30.11%	43.01%
Van Cove School District	5704000	Van Cove High School	5704018	60.32%		15.87%	23.81%	39.68%
Vilonia School District	2307000	Academy of Technology	2307701	57.50%		15.00%	27.50%	42.50%
Vilonia School District	2307000	Vilonia Elementary School	2307033	1.74%	65.12%	16.28%	16.86%	33.14%
Vilonia School District	2307000	Vilonia High School	2307034	66.43%		16.43%	17.14%	33.57%
Vilonia School District	2307000	Vilonia Junior High School	2307036	71.26%		13.77%	14.97%	28.74%
Vilonia School District	2307000	Vilonia Middle School	2307037	3.94%	55.17%	20.69%	20.20%	40.89%
Vilonia School District	2307000	Vilonia Primary School	2307035	2.17%	63.48%	16.09%	18.26%	34.35%
Viola School District	2503000	Viola Elementary School	2503009	66.38%		12.07%	21.55%	33.62%
Viola School District	2503000	Viola High School	2503010	70.59%		15.69%	13.73%	29.42%
Waldron School District	6401000	Waldron Elementary School	6401001	60.24%		20.08%	19.68%	39.76%
Waldron School District	6401000	Waldron High School	6401003	57.95%		17.76%	24.30%	42.06%
Waldron School District	6401000	Waldron Middle School	6401004	60.71%		18.30%	20.98%	39.28%
Warren School District	0602000	Eastside Primary School	0602012	61.34%		16.00%	22.67%	38.67%
Warren School District	0602000	Thomas C Brunson Elem School	0602013	52.33%		17.44%	30.23%	47.67%
Warren School District	0602000	Warren High School	0602014	42.86%		23.08%	34.07%	57.15%
Warren School District	0602000	Warren Middle School	0602015	56.44%		15.84%	27.72%	43.56%
Watson Chapel School District	3509000	Coleman Elementary School	3509066	2.72%	55.56%	17.23%	24.49%	41.72%
Watson Chapel School District	3509000	Edgewood Elementary School	3509063	3.90%	70.13%	9.96%	16.02%	25.98%
Watson Chapel School District	3509000	L L Owen Elementary School	3509064	64.31%		15.69%	20.00%	35.69%
Watson Chapel School District	3509000	Watson Chapel High School	3509067	58.93%		20.09%	20.98%	41.07%
Watson Chapel School District	3509000	Watson Chapel Jr High School	3509068	60.79%		16.30%	22.91%	39.21%
Weiner School District	5607000	Weiner Elementary School	5607031	70.93%		8.14%	20.93%	29.07%
Weiner School District	5607000	Weiner High School	5607032	63.34%		15.00%	21.67%	36.67%
West Fork School District	7208000	West Fork Elementary School	7208060	4.91%	74.55%	12.05%	8.48%	20.53%
West Fork School District	7208000	West Fork High School	7208062	63.64%		36.36%		36.36%
West Fork School District	7208000	West Fork Middle School	7208061	70.07%		13.87%	16.06%	29.93%
West Memphis School District	1803000	Bragg Elementary School	1803025	62.74%		15.69%	21.57%	37.26%
West Memphis School District	1803000	East Junior High School	1803033	58.33%		20.24%	21.43%	41.67%
West Memphis School District	1803000	Faulk Elementary School	1803026	2.62%	58.80%	15.36%	23.22%	38.58%
West Memphis School District	1803000	Jackson Elementary School	1803027	66.34%		11.39%	22.28%	33.67%
West Memphis School District	1803000	Maddux Elementary School	1803028	1.87%	59.18%	16.10%	22.85%	38.95%
West Memphis School District	1803000	Richland Elementary School	1803029	2.51%	58.06%	18.28%	21.15%	39.43%
West Memphis School District	1803000	Weaver Elementary School	1803030	54.14%		20.44%	25.41%	45.85%
West Memphis School District	1803000	Wedlock Elementary School	1803031	55.74%		16.39%	27.87%	44.26%
West Memphis School District	1803000	West Junior High School	1803034	55.03%		22.82%	22.15%	44.97%
West Memphis School District	1803000	West Memphis High School	1803036	1.70%	62.22%	16.19%	19.89%	36.08%
West Memphis School District	1803000	Wonder Elementary School	1803032	57.94%		19.74%	22.32%	42.06%
West Memphis School District	1803000	Wonder Junior High School	1803035	68.89%		13.33%	17.78%	31.11%

School District	District LEA	School	School LEA	Under weight	Healthy Weight	At Risk for Over weight	Over weight	At Risk for Over weight or Over weight
West Side School District	1204000	West Side Elementary School	1204014	68.48%		16.30%	15.22%	31.52%
West Side School District	1204000	West Side High School	1204015	67.35%		10.20%	22.45%	32.65%
Western Yell Co School Dist	7509000	Western Yell Co Elem School	7509030	63.75%		22.50%	13.75%	36.25%
Western Yell Co School Dist	7509000	Western Yell Co High School	7509033	57.78%		15.56%	26.67%	42.23%
Westside Cons School District	1602000	Westside Elementary School	1602056	3.79%	64.14%	13.13%	18.94%	32.07%
Westside Cons School District	1602000	Westside High School	1602055	2.55%	53.19%	23.40%	20.85%	44.25%
Westside Cons School District	1602000	Westside Middle School	1602058	61.00%		17.00%	22.00%	39.00%
Westside School District	3606000	Westside Elementary School	3606025	63.16%		14.47%	22.37%	36.84%
Westside School District	3606000	Westside High School	3606026	63.95%		10.47%	25.58%	36.05%
White Co Central School Dist	7304000	White Co Central Elem School	7304018	65.11%		16.86%	18.02%	34.88%
White Co Central School Dist	7304000	White Co Central High School	7304019	66.67%		18.84%	14.49%	33.33%
White Hall School District	3510000	Gandy Elementary School	3510084	2.62%	62.88%	15.72%	18.78%	34.50%
White Hall School District	3510000	Hardin Elementary School	3510078	57.83%		19.28%	22.89%	42.17%
White Hall School District	3510000	Moody Elementary School	3510079	2.23%	58.48%	17.86%	21.43%	39.29%
White Hall School District	3510000	Redfield Junior High School	3510077	63.89%		22.22%	13.89%	36.11%
White Hall School District	3510000	Taylor Elementary School	3510080	60.53%		20.61%	18.86%	39.47%
White Hall School District	3510000	White Hall High School	3510076	60.73%		15.07%	24.20%	39.27%
White Hall School District	3510000	White Hall Junior High School	3510081	2.45%	54.41%	18.14%	25.00%	43.14%
Wickes School District	5705000	Umpire Elementary School	5705016	12.82%	58.97%	28.21%		28.21%
Wickes School District	5705000	Wickes Elementary School	5705021	49.16%		25.14%	25.70%	50.84%
Wickes School District	5705000	Wickes High School	5705022	52.11%		21.13%	26.76%	47.89%
Wonderview School District	1505000	Wonderview Elementary School	1505025	62.50%		11.61%	25.89%	37.50%
Wonderview School District	1505000	Wonderview High School	1505026	67.24%		17.24%	15.52%	32.76%
Woodlawn School District	1304000	Woodlawn Elementary School	1304014	68.46%		16.92%	14.62%	31.54%
Woodlawn School District	1304000	Woodlawn High School	1304015	50.00%		19.23%	30.77%	50.00%
Wynne School District	1905000	Wynne High School	1905017	4.02%	56.32%	13.79%	25.86%	39.65%
Wynne School District	1905000	Wynne Intermediate School	1905015	54.30%		19.00%	26.70%	45.70%
Wynne School District	1905000	Wynne Junior High School	1905016	2.55%	53.40%	17.02%	27.02%	44.04%
Wynne School District	1905000	Wynne Primary School	1905014	1.77%	59.29%	17.26%	21.68%	38.94%
Yellville-Summit School Dist	4502000	Yellville-Summit Elem School	4502005	63.43%		16.57%	20.00%	36.57%
Yellville-Summit School Dist	4502000	Yellville-Summit High School	4502006	68.29%		19.51%	12.20%	31.71%
Yellville-Summit School Dist	4502000	Yellville-Summit Middle School	4502004	54.89%		24.81%	20.30%	45.11%

Appendix B: BMI Classifications by School District (2007–2008)

District Name	District LEA	Underweight	Healthy Weight	At Risk for Overweight	Overweight	At Risk for Overweight or Overweight
Academics Plus School District	6040700	5.20%	60.12%	16.76%	17.92%	34.68%
Alma School District	1701000	2.85%	66.49%	15.91%	14.75%	30.66%
Alpena School District	0501000	2.68%	58.48%	18.30%	20.54%	38.84%
Ark School for the Blind	6091000	59.37%		25.00%	15.62%	40.62%
Ark School for the Deaf	6092000	57.81%		15.62%	26.56%	42.18%
Arkadelphia School District	1002000	3.24%	54.81%	18.19%	23.75%	41.94%
Arkansas Virtual Academy	6043700	71.13%		12.37%	16.49%	28.86%
Armored School District	4701000	58.61%		18.28%	23.12%	41.40%
Ashdown School District	4101000	1.14%	54.29%	18.29%	26.29%	44.58%
Atkins School District	5801000	1.74%	63.76%	16.38%	18.12%	34.50%
Augusta School District	7401000	56.25%		18.75%	25.00%	43.75%
Bald Knob School District	7301000	52.85%		19.89%	27.26%	47.15%
Barton-Lexa School District	5401000	55.03%		18.44%	26.54%	44.98%
Batesville School District	3201000	1.80%	60.53%	16.18%	21.49%	37.67%
Bauxite School District	6301000	1.62%	60.2%	19.19%	18.99%	38.18%
Bay School District	1601000	58.71%		24.52%	16.77%	41.29%
Bearden School District	5201000	2.39%	48.80%	20.10%	28.71%	48.81%
Beebe School District	7302000	2.00%	57.75%	19.79%	20.46%	40.25%
Benton County School of Arts	0440700	73.70%		15.52%	10.78%	26.30%
Benton School District	6302000	1.60%	61.07%	16.84%	20.49%	37.33%
Bentonville School District	0401000	2.76%	69.66%	15.29%	12.30%	27.59%
Bergman School District	0502000	1.97%	60.61%	19.04%	18.38%	37.42%
Berryville School District	0801000	2.25%	59.79%	15.66%	22.30%	37.96%
Bismarck School District	3001000	2.59%	61.14%	18.91%	17.36%	36.27%
Blevins School District	2901000	1.82%	57.66%	14.23%	26.28%	40.51%
Blytheville School District	4702000	1.30%	54.63%	17.07%	26.99%	44.06%
Booneville School District	4201000	3.51%	61.18%	16.27%	19.04%	35.31%
Bradford School District	7303000	54.06%		19.62%	26.32%	45.94%
Bradley School District	3701000	66.04%		13.84%	20.13%	33.97%
Brinkley School District	4801000	50.77%		21.54%	27.69%	49.23%
Brookland School District	1603000	1.04%	60.80%	17.14%	21.01%	38.15%
Bryant School District	6303000	1.95%	64.82%	16.10%	17.13%	33.23%
Buffalo Isl Central School District	1605000	1.72%	55.87%	15.47%	26.93%	42.40%
Cabot School District	4304000	1.88%	64.82%	17.02%	16.27%	33.29%
Caddo Hills School District	4901000	2.48%	58.26%	16.94%	22.31%	39.25%
Calico Rock School District	3301000	7.19%	68.26%	11.98%	12.57%	24.55%
Camden Fairview School District	5204000	61.35%		17.91%	20.74%	38.65%
Carlisle School District	4303000	58.66%		15.19%	26.15%	41.34%

District Name	District LEA	Under weight	Healthy Weight	At Risk for Overweight	Over weight	At Risk for Overweight or Overweight
Cave City School District	6802000	1.36%	56.61%	18.29%	23.74%	42.03%
Cedar Ridge School District	3212000	3.95%	55.37%	18.08%	22.60%	40.68%
Cedarville School District	1702000	1.90%	65.22%	17.66%	15.22%	32.88%
Centerpoint School District	5502000	1.73%	58.53%	19.65%	20.09%	39.74%
Charleston School District	2402000	4.30%	65.04%	14.33%	16.33%	30.66%
Clarendon School District	4802000	55.50%		17.00%	27.50%	44.50%
Clarksville School District	3601000	2.30%	58.93%	16.65%	22.12%	38.77%
Cleveland County School District	1305000	51.91%		21.37%	26.72%	48.09%
Clinton School District	7102000	2.18%	56.83%	20.00%	20.99%	40.99%
Concord School District	1201000	2.95%	63.71%	13.92%	19.41%	33.33%
Conway School District	2301000	1.51%	63.24%	17.00%	18.25%	35.25%
Corning School District	1101000	0.98%	57.23%	16.99%	24.80%	41.79%
Cotter School District	0302000	2.20%	56.04%	19.41%	22.34%	41.75%
County Line School District	2403000	60.25%		18.01%	21.74%	39.75%
Cross County School District	1901000	2.21%	54.61%	16.24%	26.94%	43.18%
Crossett School District	0201000	2.72%	58.91%	20.05%	18.32%	38.37%
Cushman School District	3203000	58.99%		21.58%	19.42%	41.00%
Cutter-Morning Star School District	2601000	3.35%	62.83%	14.50%	19.33%	33.83%
Danville School District	7503000	52.30%		13.16%	34.54%	47.70%
Dardanelle School District	7504000	1.76%	56.80%	18.89%	22.54%	41.43%
Decatur School District	0402000	3.86%	58.94%	18.36%	18.84%	37.20%
Deer-Mt Judea School District	5106000	64.89%		19.08%	16.03%	35.11%
Delight School District	5501000	54.76%		20.63%	24.60%	45.23%
DeQueen School District	6701000	1.60%	50.69%	18.76%	28.95%	47.71%
Dermott School District	0901000	3.26%	57.61%	17.93%	21.20%	39.13%
Des Arc School District	5901000	2.43%	52.43%	16.50%	28.64%	45.14%
Dewitt School District	0101000	1.53%	58.47%	20.17%	19.83%	40.00%
Dierks School District	3102000	65.04%		17.89%	17.07%	34.96%
Dollarway School District	3502000	1.30%	56.45%	16.56%	25.68%	42.24%
Dover School District	5802000	1.12%	61.90%	13.75%	23.23%	36.98%
Dreamland Academy	6042700	62.50%		23.08%	14.42%	37.50%
Drew Central School District	2202000	1.96%	58.09%	13.73%	26.23%	39.96%
Dumas School District	2104000	0.98%	56.24%	17.39%	25.39%	42.78%
Earle School District	1802000	64.15%		15.13%	20.72%	35.85%
East End School District	5301000	3.07%	59.00%	16.86%	21.07%	37.93%
East Poinsett Co School District	5608000	1.40%	51.54%	16.25%	30.81%	47.06%
El Dorado School District	7001000	1.03%	58.16%	19.35%	21.46%	40.81%
Elkins School District	7201000	1.23%	60.25%	18.77%	19.75%	38.52%
Emerson-Taylor School District	1408000	1.87%	58.96%	17.91%	21.27%	39.18%
England School District	4302000	2.71%	53.92%	17.17%	26.20%	43.37%

District Name	District LEA	Under weight	Healthy Weight	At Risk for Overweight	Over weight	At Risk for Overweight or Overweight
Eureka Springs School District	0802000	3.27%	75.16%	13.73%	7.84%	21.57%
Farmington School District	7202000	2.40%	65.91%	15.66%	16.04%	31.70%
Fayetteville School District	7203000	1.82%	67.35%	16.96%	13.88%	30.84%
Flippin School District	4501000	62.40%		18.53%	19.07%	37.60%
Fordyce School District	2002000	1.28%	54.26%	18.94%	25.53%	44.47%
Foreman School District	4102000	3.93%	59.55%	16.85%	19.66%	36.51%
Forrest City School District	6201000	2.22%	58.87%	16.80%	22.11%	38.91%
Fort Smith School District	6601000	1.73%	62.97%	16.97%	18.33%	35.30%
Fouke School District	4603000	1.79%	60.71%	18.62%	18.88%	37.50%
Fountain Lake School District	2602000	2.25%	67.32%	15.21%	15.21%	30.42%
Genoa Central School District	4602000	3.08%	61.61%	14.45%	20.85%	35.30%
Gentry School District	0403000	1.91%	64.52%	17.22%	16.35%	33.57%
Glen Rose School District	3002000	1.60%	66.67%	13.14%	18.59%	31.73%
Gosnell School District	4708000	2.27%	58.92%	18.01%	20.80%	38.81%
Gravette School District	0404000	1.39%	68.71%	17.03%	12.87%	29.90%
Green Forest School District	0803000	1.48%	53.80%	18.14%	26.58%	44.72%
Greenbrier School District	2303000	1.46%	65.42%	16.42%	16.70%	33.12%
Greene Co Tech School District	2807000	1.70%	57.93%	17.71%	22.66%	40.37%
Greenland School District	7204000	62.00%		18.69%	19.31%	38.00%
Greenwood School District	6602000	2.73%	64.69%	15.30%	17.28%	32.58%
Gurdon School District	1003000	1.45%	55.20%	18.50%	24.86%	43.36%
Guy-Perkins School District	2304000	62.18%		18.59%	19.23%	37.82%
Hackett School District	6603000	2.42%	66.13%	12.10%	19.35%	31.45%
Hamburg School District	0203000	0.87%	58.90%	17.68%	22.54%	40.22%
Hampton School District	0701000	56.23%		18.86%	24.91%	43.77%
Harmony Grove School District	5205000	6.00%	56.12%	15.94%	21.94%	37.88%
Harmony Grove School District	6304000	2.49%	62.62%	19.31%	15.58%	34.89%
Harrisburg School District	5602000	1.58%	56.56%	17.65%	24.21%	41.86%
Harrison School District	0503000	2.30%	63.56%	15.69%	18.44%	34.13%
Hartford School District	6604000	57.63%		21.19%	21.19%	42.38%
Hazen School District	5903000	57.72%		19.49%	22.79%	42.28%
Heber Springs School District	1202000	1.83%	62.52%	17.55%	18.10%	35.65%
Hector School District	5803000	2.73%	64.09%	13.18%	20.00%	33.18%
Helena-W Helena School District	5403000	1.43%	53.68%	20.15%	24.74%	44.89%
Hermitage School District	0601000	52.14%		20.25%	27.61%	47.86%
Highland School District	6804000	5.65%	61.45%	16.45%	16.45%	32.90%
Hillcrest School District	3809000	60.47%		19.05%	20.48%	39.53%
Hope Academy	3540700	44.83%		20.69%	34.48%	55.17%
Hope School District	2903000	5.64%	56.26%	16.40%	21.69%	38.09%
Horatio School District	6703000	59.12%		16.27%	24.60%	40.87%

District Name	District LEA	Under weight	Healthy Weight	At Risk for Overweight	Over weight	At Risk for Overweight or Overweight
Hot Springs School District	2603000	1.88%	59.52%	16.49%	22.12%	38.61%
Hoxie School District	3804000	56.89%		21.55%	21.55%	43.10%
Hughes School District	6202000	59.27%		19.76%	20.97%	40.73%
Huntsville School District	4401000	2.55%	62.23%	18.55%	16.67%	35.22%
Izard Co Cons School District	3306000	55.98%		19.23%	24.79%	44.02%
Jackson Co School District	3405000	59.17%		16.46%	24.37%	40.83%
Jasper School District	5102000	1.48%	56.97%	22.55%	18.99%	41.54%
Jessieville School District	2604000	4.22%	67.81%	12.66%	15.30%	27.96%
Jonesboro School District	1608000	1.37%	56.35%	17.64%	24.64%	42.28%
Junction City School District	7003000	57.52%		18.42%	24.06%	42.48%
Kipp Delta College Prep School	5440700	57.76%		13.79%	28.45%	42.24%
Kirby School District	5503000	64.06%		26.56%	9.38%	35.94%
Lafayette County School District	3704000	1.92%	59.29%	17.95%	20.83%	38.78%
Lake Hamilton School District	2605000	1.74%	67.43%	14.09%	16.74%	30.83%
Lakeside School District	0903000	1.31%	55.60%	16.04%	27.05%	43.09%
Lakeside School District	2606000	2.14%	65.30%	17.62%	14.95%	32.57%
Lamar School District	3604000	1.85%	53.58%	17.78%	26.79%	44.57%
Lavaca School District	6605000	2.29%	66.19%	15.76%	15.76%	31.52%
Lawrence County School District	3810000	1.57%	61.52%	17.80%	19.11%	36.91%
Lead Hill School District	0506000	3.57%	71.43%	13.69%	11.31%	25.00%
Lee County School District	3904000	0.96%	53.46%	18.27%	27.31%	45.58%
Lincoln School District	7205000	1.68%	64.66%	17.07%	16.59%	33.66%
Lisa Academy	6041700	5.50%	57.80%	22.02%	14.68%	36.70%
Little Rock School District	6001000	1.51%	59.97%	17.61%	20.91%	38.52%
Lonoke School District	4301000	1.31%	52.83%	19.16%	26.71%	45.87%
Magazine School District	4202000	58.69%		18.31%	23.00%	41.31%
Magnet Cove School District	3003000	3.98%	56.88%	16.82%	22.32%	39.14%
Magnolia School District	1402000	0.76%	56.06%	20.87%	22.31%	43.18%
Malvern School District	3004000	1.36%	51.30%	18.87%	28.47%	47.34%
Mammoth Spring School District	2501000	55.21%		17.18%	27.61%	44.79%
Manila School District	4712000	2.35%	51.81%	18.55%	27.29%	45.84%
Mansfield School District	6606000	4.80%	62.80%	13.60%	18.80%	32.40%
Marion School District	1804000	2.13%	59.54%	16.40%	21.93%	38.33%
Marked Tree School District	5604000	50.63%		18.99%	30.38%	49.37%
Marmaduke School District	2803000	57.40%		14.08%	28.52%	42.60%
Marvell School District	5404000	58.53%		17.73%	23.75%	41.48%
Mayflower School District	2305000	57.96%		20.63%	21.41%	42.04%
Maynard School District	6102000	2.83%	58.02%	18.40%	20.75%	39.15%
McCrory School District	7403000	1.72%	49.66%	21.38%	27.24%	48.62%

District Name	District LEA	Under weight	Healthy Weight	At Risk for Overweight	Over weight	At Risk for Overweight or Overweight
McGehee School District	2105000	2.07%	55.40%	20.00%	22.53%	42.53%
Melbourne School District	3302000	2.71%	65.08%	16.95%	15.25%	32.20%
Mena School District	5703000	1.80%	59.46%	19.18%	19.56%	38.74%
Midland School District	3211000	62.99%		14.96%	22.05%	37.01%
Mineral Springs School District	3104000	2.97%	49.15%	14.41%	33.47%	47.88%
Monticello School District	2203000	1.70%	58.41%	18.64%	21.25%	39.89%
Mount Ida School District	4902000	60.89%		15.35%	23.76%	39.11%
Mountain Home School District	0303000	1.69%	64.06%	16.38%	17.88%	34.26%
Mountain Pine School District	2607000	64.57%		16.50%	18.93%	35.43%
Mountain View School District	6901000	2.50%	58.39%	16.92%	22.19%	39.11%
Mountainburg School District	1703000	69.01%		15.13%	15.87%	31.00%
Mt Vernon-Enola School District	2306000	64.00%		18.67%	17.33%	36.00%
Mulberry School District	1704000	62.75%		13.27%	23.98%	37.25%
Murfreesboro School District	5504000	59.23%		18.88%	21.89%	40.77%
North Little Rock School District	6002000	1.70%	61.55%	16.95%	19.80%	36.75%
Nashville School District	3105000	64.09%		17.61%	18.31%	35.92%
Nemo Vista School District	1503000	66.49%		18.09%	15.43%	33.52%
Nettleton School District	1611000	2.76%	59.37%	18.05%	19.82%	37.87%
Nevada School District	5008000	56.52%		15.76%	27.72%	43.48%
Newport School District	3403000	1.64%	56.80%	17.34%	24.22%	41.56%
Norfork School District	0304000	66.08%		14.88%	19.05%	33.93%
Norphlet School District	7006000	55.03%		21.16%	23.81%	44.97%
Omaha School District	0504000	56.83%		25.68%	17.49%	43.17%
Osceola School District	4713000	3.25%	54.62%	19.69%	22.43%	42.12%
Ouachita River School District	5706000	2.43%	72.47%	13.36%	11.74%	25.10%
Ouachita School District	3005000	61.73%		20.57%	17.70%	38.27%
Ozark Mountain School District	6505000	2.41%	59.44%	18.07%	20.08%	38.15%
Ozark School District	2404000	1.41%	57.89%	19.38%	21.31%	40.69%
Palestine-Wheatley School District	6205000	41.83%		20.19%	37.98%	58.17%
Pangburn School District	7309000	1.72%	61.51%	18.21%	18.56%	36.77%
Paragould School District	2808000	1.34%	55.42%	16.82%	26.42%	43.24%
Paris School District	4203000	2.12%	58.00%	19.65%	20.23%	39.88%
Parkers Chapel School District	7007000	1.71%	66.55%	16.04%	15.70%	31.74%
Pea Ridge School District	0407000	1.85%	64.35%	16.20%	17.59%	33.79%
Perryville School District	5303000	4.36%	64.03%	16.08%	15.53%	31.61%
Piggott School District	1104000	1.69%	57.49%	16.43%	24.40%	40.83%
Pine Bluff School District	3505000	1.22%	57.84%	18.22%	22.72%	40.94%
Pocahontas School District	6103000	1.77%	58.78%	16.05%	23.40%	39.45%

District Name	District LEA	Under weight	Healthy Weight	At Risk for Overweight	Over weight	At Risk for Overweight or Overweight
Pottsville School District	5804000	1.95%	63.52%	17.92%	16.61%	34.53%
Poyen School District	2703000	57.83%		24.10%	18.07%	42.17%
Prairie Grove School District	7206000	2.37%	66.67%	18.76%	12.20%	30.96%
Prescott School District	5006000	1.50%	56.14%	20.55%	21.80%	42.35%
Pulaski Co Spec School District	6003000	2.33%	61.70%	16.13%	19.85%	35.98%
Quitman School District	1203000	60.37%		17.41%	22.22%	39.63%
Rector School District	1106000	56.18%		17.53%	26.29%	43.82%
Riverside School District	1613000	65.06%		19.89%	15.05%	34.94%
Riverview School District	7307000	3.66%	59.15%	18.31%	18.87%	37.18%
Rogers School District	0405000	1.65%	59.82%	18.19%	20.34%	38.53%
Rose Bud School District	7310000	56.46%		20.72%	22.82%	43.54%
Russellville School District	5805000	1.12%	57.15%	19.10%	22.63%	41.73%
Salem School District	2502000	62.10%		13.99%	23.91%	37.90%
Scranton School District	4204000	67.60%		14.53%	17.88%	32.41%
Searcy County School District	6502000	2.11%	57.89%	14.47%	25.53%	40.00%
Searcy School District	7311000	2.45%	65.23%	16.20%	16.12%	32.32%
Sheridan School District	2705000	1.64%	59.66%	17.73%	20.96%	38.69%
Shirley School District	7104000	70.51%		18.71%	10.79%	29.50%
Siloam Springs School District	0406000	2.51%	61.48%	17.27%	18.73%	36.00%
Sloan-Hendrix School District	3806000	59.48%		15.09%	25.43%	40.52%
Smackover School District	7008000	57.86%		17.98%	24.16%	42.14%
So Conway County School District	1507000	1.98%	55.79%	16.67%	25.56%	42.23%
So Miss County School District	4706000	53.91%		19.66%	26.43%	46.09%
South Side School District	7105000	58.37%		19.91%	21.72%	41.63%
Southside School District	3209000	2.99%	58.27%	17.25%	21.48%	38.73%
Spring Hill School District	2906000	60.66%		15.98%	23.36%	39.34%
Springdale School District	7207000	1.29%	58.47%	19.06%	21.18%	40.24%
Star City School District	4003000	1.81%	55.18%	19.95%	23.06%	43.01%
Stephens School District	5206000	65.49%		18.31%	16.20%	34.51%
Strong-Huttig School District	7009000	50.39%		16.15%	33.46%	49.61%
Stuttgart School District	0104000	1.54%	57.97%	17.87%	22.62%	40.49%
Texarkana School District	4605000	1.74%	61.34%	16.46%	20.47%	36.93%
Trumann School District	5605000	2.09%	57.95%	17.50%	22.47%	39.97%
Turrell School District	1805000	57.66%		18.92%	23.42%	42.34%
Twin Rivers School District	6806000	62.84%		15.54%	21.62%	37.16%
Two Rivers School District	7510000	2.35%	58.36%	17.30%	21.99%	39.29%
Valley Springs School District	0505000	2.57%	71.14%	11.14%	15.14%	26.28%
Valley View School District	1612000	3.52%	68.00%	15.39%	13.09%	28.48%
Van Buren School District	1705000	1.41%	60.85%	17.00%	20.74%	37.74%

District Name	District LEA	Under weight	Healthy Weight	At Risk for Overweight	Over weight	At Risk for Overweight or Overweight
Van Cove School District	5704000	58.33%		14.10%	27.56%	41.66%
Vilonia School District	2307000	2.14%	63.35%	16.64%	17.88%	34.52%
Viola School District	2503000	67.66%		13.17%	19.16%	32.33%
Waldron School District	6401000	1.72%	58.28%	18.97%	21.03%	40.00%
Warren School District	0602000	1.16%	54.47%	17.22%	27.15%	44.37%
Watson Chapel School District	3509000	2.03%	60.52%	16.04%	21.41%	37.45%
Weiner School District	5607000	67.80%		10.96%	21.23%	32.19%
West Fork School District	7208000	4.18%	71.02%	12.53%	12.27%	24.80%
West Memphis School District	1803000	1.70%	59.36%	16.94%	22.00%	38.94%
West Side School District	1204000	68.09%		14.18%	17.73%	31.91%
Western Yell County School District	7509000	61.60%		20.00%	18.40%	38.40%
Westside Cons School District	1602000	3.42%	59.64%	16.96%	19.97%	36.93%
Westside School District	3606000	63.45%		13.03%	23.53%	36.56%
White Co Central School Dist	7304000	65.56%		17.43%	17.01%	34.44%
White Hall School District	3510000	1.84%	58.81%	17.84%	21.52%	39.36%
Wickes School District	5705000	3.63%	51.16%	22.11%	23.10%	45.21%
Wonderview School District	1505000	64.11%		13.53%	22.35%	35.88%
Woodlawn School District	1304000	2.88%	58.65%	17.79%	20.67%	38.46%
Wynne School District	1905000	2.13%	55.88%	17.01%	24.98%	41.99%
Yellville-Summit School Dist	4502000	60.75%		20.06%	19.20%	39.26%

Appendix C: BMI Classifications by County (2007–2008)

County	Under weight	Healthy Weight	At Risk for Overweight	Overweight	At Risk for Overweight or Overweight
Arkansas	1.54%	58.19%	18.86%	21.42%	40.28%
Ashley	1.80%	58.91%	18.87%	20.42%	39.29%
Baxter	1.76%	63.01%	16.66%	18.57%	35.23%
Benton	2.18%	64.40%	16.85%	16.57%	33.42%
Boone	2.35%	63.55%	16.49%	17.61%	34.10%
Bradley	1.04%	53.85%	17.86%	27.25%	45.11%
Calhoun		56.23%	18.86%	24.91%	43.77%
Carroll	2.11%	59.46%	16.26%	22.18%	38.44%
Chicot	1.81%	56.11%	16.53%	25.56%	42.09%
Clark	2.73%	54.92%	18.28%	24.07%	42.35%
Clay	1.19%	56.92%	16.91%	24.98%	41.89%
Cleburne	1.92%	62.43%	16.40%	19.25%	35.65%
Cleveland	1.66%	53.58%	20.13%	24.63%	44.76%
Columbia	0.97%	56.60%	20.32%	22.11%	42.43%
Conway	2.06%	58.26%	16.42%	23.26%	39.68%
Craighead	2.21%	60.08%	17.35%	20.36%	37.71%
Crawford	1.77%	62.99%	16.50%	18.73%	35.23%
Crittenden	1.81%	59.60%	16.67%	21.92%	38.59%
Cross	2.14%	55.67%	16.88%	25.31%	42.19%
Dallas	1.28%	54.26%	18.94%	25.53%	44.47%
Desha	1.39%	55.92%	18.38%	24.30%	42.68%
Drew	1.79%	58.31%	17.08%	22.83%	39.91%
Faulkner	1.53%	63.23%	17.13%	18.11%	35.24%
Franklin	2.09%	60.05%	17.84%	20.02%	37.86%
Fulton	0.74%	61.07%	14.56%	23.63%	38.19%
Garland	2.11%	64.38%	15.61%	17.89%	33.50%
Grant	1.61%	59.39%	18.30%	20.71%	39.01%
Greene	1.51%	56.62%	16.96%	24.91%	41.87%
Hempstead	4.36%	56.96%	15.98%	22.70%	38.68%
Hot Spring	1.98%	57.15%	17.89%	22.98%	40.87%
Howard	1.40%	59.76%	16.83%	22.01%	38.84%
Independence	2.38%	59.08%	16.98%	21.56%	38.54%
Izard	3.30%	62.36%	16.52%	17.82%	34.34%
Jackson	1.32%	57.36%	17.06%	24.26%	41.32%
Jefferson	1.57%	58.48%	17.37%	22.58%	39.95%
Johnson	1.96%	58.02%	16.41%	23.61%	40.02%
Lafayette	1.49%	61.36%	16.56%	20.59%	37.15%
Lawrence	1.17%	59.08%	18.43%	21.32%	39.75%
Lee	0.96%	53.46%	18.27%	27.31%	45.58%
Lincoln	1.81%	55.18%	19.95%	23.06%	43.01%
Little River	1.71%	55.35%	18.00%	24.94%	42.94%
Logan	2.41%	60.12%	17.56%	19.90%	37.46%
Lonoke	1.81%	62.05%	17.22%	18.91%	36.13%
Madison	2.55%	62.23%	18.55%	16.67%	35.22%
Marion	0.98%	60.61%	19.27%	19.13%	38.40%
Miller	1.97%	61.29%	16.46%	20.28%	36.74%
Mississippi	1.82%	54.92%	18.27%	24.99%	43.26%
Monroe	1.14%	51.43%	19.81%	27.62%	47.43%
Montgomery	1.80%	59.01%	16.22%	22.97%	39.19%
Nevada	1.72%	55.57%	19.04%	23.67%	42.71%
Newton	1.71%	58.55%	21.58%	18.16%	39.74%
Ouachita	2.31%	58.29%	17.70%	21.70%	39.40%
Perry	3.82%	61.94%	16.40%	17.83%	34.23%
Phillips	1.21%	54.62%	19.01%	25.16%	44.17%

County	Under weight	Healthy Weight	At Risk for Overweight	Overweight	At Risk for Overweight or Overweight
Pike	1.79%	58.00%	20.53%	19.68%	40.21%
Poinsett	1.55%	56.01%	16.95%	25.48%	42.43%
Polk	2.23%	59.68%	18.27%	19.82%	38.09%
Pope	1.41%	59.88%	17.53%	21.18%	38.71%
Prairie	1.88%	54.60%	18.20%	25.31%	43.51%
Pulaski	1.88%	60.78%	17.08%	20.25%	37.33%
Randolph	2.01%	58.61%	16.58%	22.81%	39.39%
Saline	1.83%	62.98%	16.82%	18.38%	35.20%
Scott	1.72%	58.28%	18.97%	21.03%	40.00%
Searcy	2.23%	58.51%	15.90%	23.37%	39.27%
Sebastian	2.07%	63.47%	16.36%	18.09%	34.45%
Sevier	1.42%	52.40%	18.21%	27.98%	46.19%
Sharp	3.51%	59.44%	17.08%	19.97%	37.05%
St Francis	1.90%	56.89%	17.54%	23.66%	41.20%
Stone	2.50%	58.39%	16.92%	22.19%	39.11%
Union	1.03%	57.75%	18.67%	22.56%	41.23%
Van Buren	1.62%	59.08%	19.77%	19.54%	39.31%
Washington	1.63%	62.18%	18.03%	18.15%	36.18%
White	1.88%	59.51%	18.49%	20.13%	38.62%
Woodruff	1.75%	51.75%	20.23%	26.26%	46.49%
Yell	1.66%	56.39%	17.52%	24.42%	41.94%



The Arkansas Center for Health Improvement is a nonpartisan, independent health policy center dedicated to improving the health of Arkansans.

It is jointly supported by the University of Arkansas for Medical Sciences, the Arkansas Department of Health and Arkansas Blue Cross and Blue Shield.

