



Assessment of Childhood and Adolescent Obesity in Arkansas

Year Six (Fall 2008-Spring 2009)

Suggested citation: Arkansas Center for Health Improvement, Year Six Assessment of Childhood and Adolescent Obesity in Arkansas (Fall 2008-Spring 2009), Little Rock, AR: ACHI, December 2009

Copyright © December 2009 by the Arkansas Center for Health Improvement. All rights reserved.

Table of Contents

	Page
Student and School Participation in the BMI Initiative	1
Reasons Students Could Not be Assessed	3
Special Circumstances for Reporting	3
Statewide Results of the Arkansas BMI Assessments	4
<ul style="list-style-type: none">• BMI Classifications for All Students• BMI Classifications by Gender• BMI Classifications by Ethnic Group• BMI Classifications by Gender and Ethnic Group• BMI Classifications by Grade• BMI Classifications by Gender and Grade• BMI Classifications by Gender, Ethnic Group and Grade	
School District Results	9
BMI Data Collection	10
<ul style="list-style-type: none">• Process• Definition of BMI	
Overview of BMI Reports	11
<ul style="list-style-type: none">• Child Health Reports• School Reports• School District Reports• Statewide Report	
Appendices	
<ul style="list-style-type: none">• Appendix A: BMI Classifications by County (2008-2009)• Appendix B: BMI Classifications by School District (2008-2009)• Appendix C: BMI Classifications by School (2008-2009)	 12 14 22
List of Tables and Figures	
<ul style="list-style-type: none">• Table 1: 2008-2009 Statewide Participation in BMI Assessments• Map 1: 2008-2009 Percentage of Students Assessed by Arkansas Public School District• Figure 1: Student BMI Assessment• Figure 2: Trends in BMI Classification• Figure 3: BMI Classification by Gender• Figure 4: BMI Classification by Ethnic Group• Figure 5: Percent of Students Classified as Obese or Overweight by Gender and Ethnic Group• Figure 6: Percent of Students Classified as Obese or Overweight by Grade• Figure 7: Percent of Students Classified as Obese or Overweight by Gender and Grade• Figure 8: Percent of Students Classified as Obese or Overweight By Gender, Ethnic Group and Grade• Map 2: Percentage of Students Overweight or Obese by Arkansas Public School District	 1 2 3 4 5 5 6 6 7 7 8 9

Student and School Participation in the BMI Initiative

In the 2008-2009 school year, 98.7 percent (1,072 of 1,086) of Arkansas public schools, in 257 of 262 school districts, participated in the statewide BMI assessments. These totals include BMI assessments that were submitted by June 11, 2009 for 216,871 of the state's 221,583 public school students enrolled in grades K, 2, 4, 6, 8 and 10. Among students for whom data was reported, 82.5 percent (179,007) has appropriate data to allow BMI calculation.

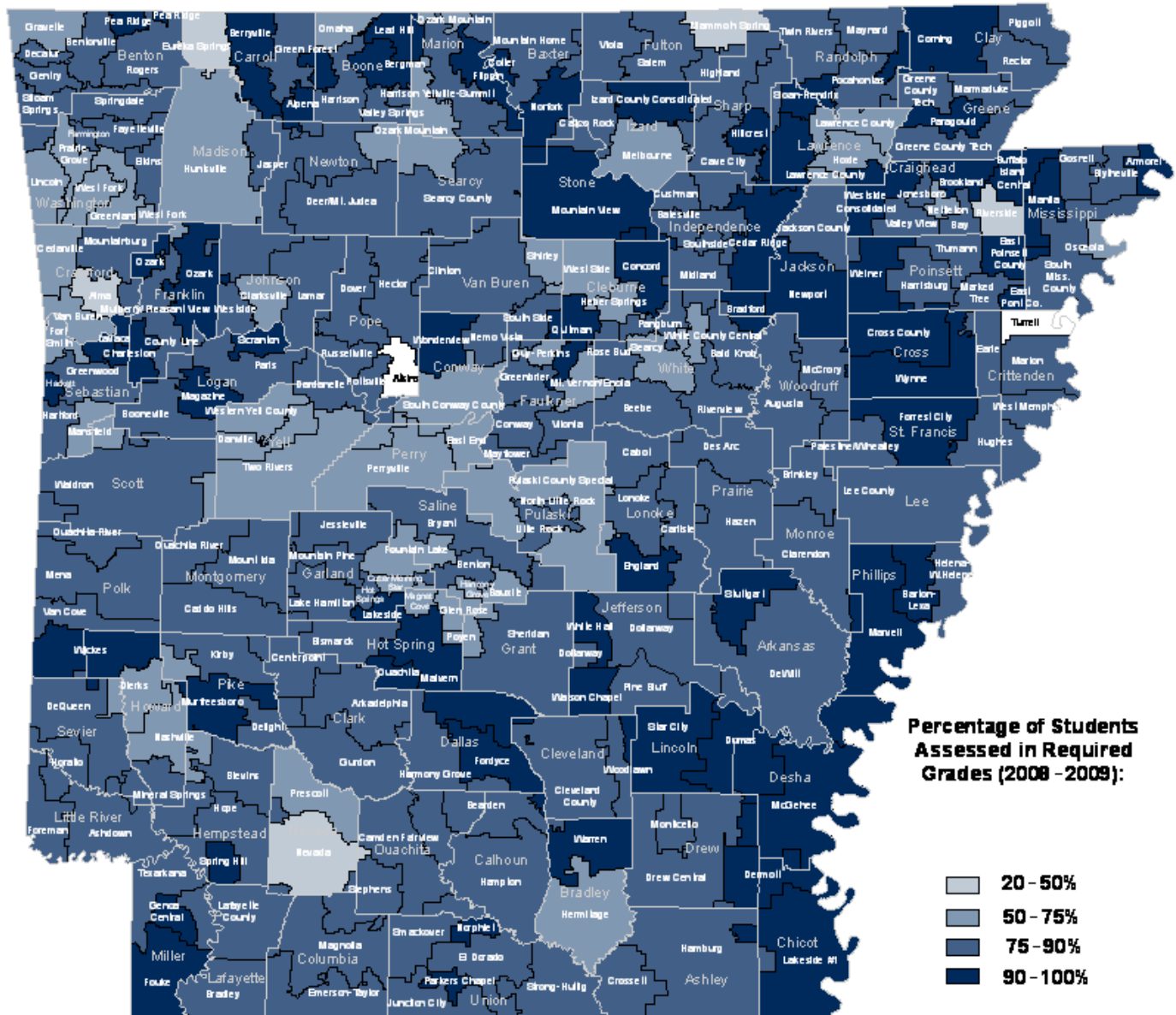
**Table 1: 2008-2009 Statewide Participation in BMI Assessments
(Students in Grades K, 2, 4, 6, 8 and 10)**

Report Year	Participation		Total Students Participating	Student Data		
	Public Schools	Students in Grades K, 2, 4, 6, 8, 10		Valid for Analysis	Invalid	Unable to Assess
	Percent Number/Total	Percent Number/Total	Number	Percent Number	Percent Number	Percent Number
Year 1 ('03-'04)	94.5% 1,056 of 1,118	92.8% 201,669 of 217,206	201,669	83.7% 168,760	1.2% 2,346	15.1% 30,563
Year 2 ('04-'05)	98.8% 1,110 of 1,124	96.4% 209,563 of 217,460	209,563	84.7% 177,504	1.0% 2,171	14.3% 29,888
Year 3 ('05-'06)	98.7% 1,082 of 1,096	92.7% 205,529 of 221,758	205,529	87.1% 179,027	0.3% 546	12.6% 25,956
Year 4 ('06-'07)	99.2% 1,062 of 1,071	97.1% 223,214 of 229,815	223,214	80.1% 178,904	0.036% 80	19.8% 44,230
Year 5 ('07-'08)	99.2% 1,069 of 1,078	98.5% 217,601 of 220,946	217,601	81.9% 178,182	0.038% 82	18.0% 39,337
Year 6 ('08-'09)	98.7% 1,072 of 1,086	97.9% 216,871 of 221,583	216,871	82.5% 179,007	0.1% 291	17.3% 37,573

Results include all data available for years 1, 2, 3, 4 and 5 for grades K, 2, 4, 6, 8 and 10, and year 6 data for the same grades received by June 11, 2009. The most common reason students were not assessed for BMI was absence from school. Reasons students could not be assessed are detailed in Figure 1. Fluctuation in the total number of public schools each year is due to school closings, new school openings and mergers. Only schools with students in even-number grades were included in this report.

Map 1: 2008-2009 Percentage of Students Assessed by Arkansas Public School District (Students in Grades K, 2, 4, 6, 8 and 10)

Student assessment rates varied from 37 percent to 99 percent of student enrollment in required grades. High participation rates allow confidence in the results reported by school and school districts. For those schools or school districts with low participation rates, under-reporting of select categories is possible.



Sources: Arkansas Center for Health Improvement, Arkansas Department of Education and Census TIGER Lines Files.

Notes: Results were reported for 256 of 262 Arkansas school districts.

The non-participating districts were Arkansas School for the Blind, Atkins School District, Haas Hall Academy, Northwest Arkansas Academy of Fine Arts, School of Excellence Charter and Turrell School District..

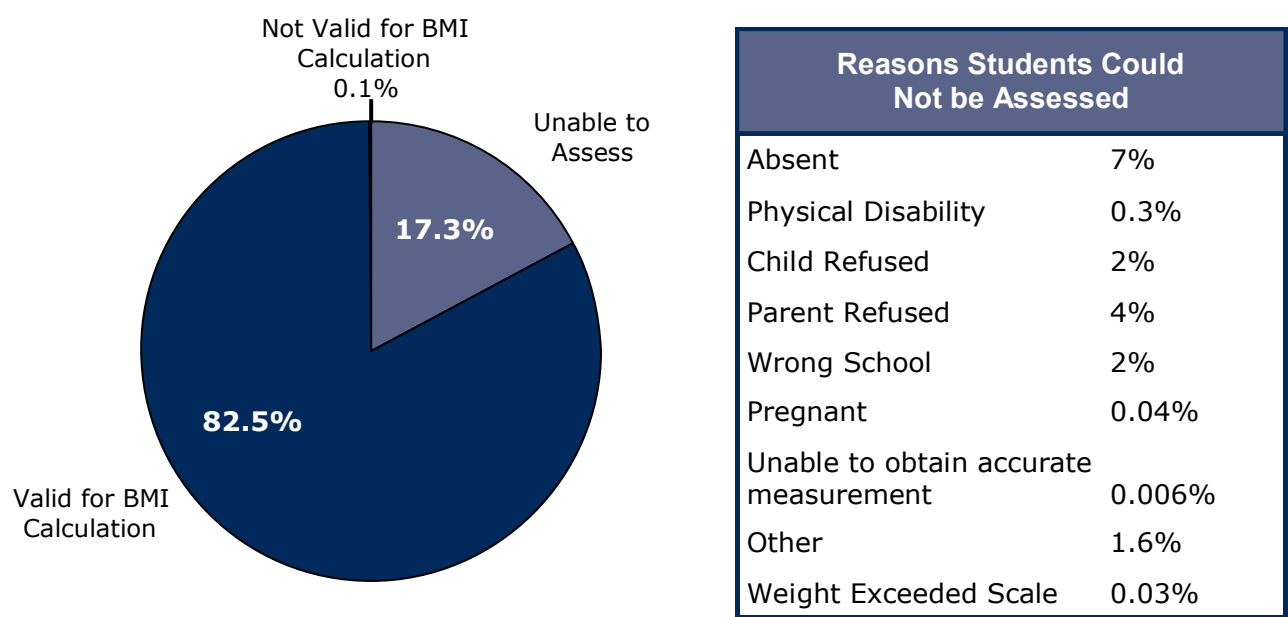
The following school districts are not included in the map because of small geographic size: Academics Plus, Arkansas School for the Blind, Arkansas School for the Deaf, Arkansas Virtual Academy, Benton County School of Arts, Covenant Keepers Charter,, Dreamland Academy, ESTEM Elementary Public Charter, ESTEM Middle Public Charter, Haas Hall Academy, Hope Academy, Imboden Charter, Kipp-Delta College Prep, Lisa Academy, Lisa Academy North, Northwest Arkansas Academy of Fine Arts and School of Excellence Charter.

Reasons Students Could Not be Assessed

To complete the BMI assessments, schools collected each student’s name, address, grade, gender, ethnicity, and birth date along with his/her height and weight measurements.

Approximately one in 6 students (37,573) could not have their BMIs calculated, usually because they were absent on the day of assessment. Other reasons that students were classified as “unable to assess” include physical disability, students’ or parents’ refusal to participate, and inability to obtain accurate measurements. Less than one percent (291) of students who participated in the assessment process had “invalid” data, meaning that the information reported could not be used to calculate a BMI.

**Figure 1: 2008-2009 Student BMI Assessment
(Students in Grades K, 2, 4, 6, 8 and 10)**



Special Circumstances for Reporting

The results section of this report includes statewide BMI percentages of underweight, healthy weight, overweight and obese students for selected demographic subgroups. Percentages for these four classifications are also reported for the majority of districts and counties in the state (see Appendices).

However, to protect private health information (based on rules in the federal Health Insurance Portability and Accountability Act of 1996) and in compliance with common statistical reporting practices, if less than five students are in a particular classification, then that group is either not reported or is combined with another group. For example, if fewer than five students are in the underweight category, this category is combined with the healthy weight group. Similarly, for some schools with less than five students in the overweight or obese classifications, these two groups are combined.

Due to the large number of students assessed, results by gender, ethnic groups, and grade were included in this report that are not available from any other source in the nation.

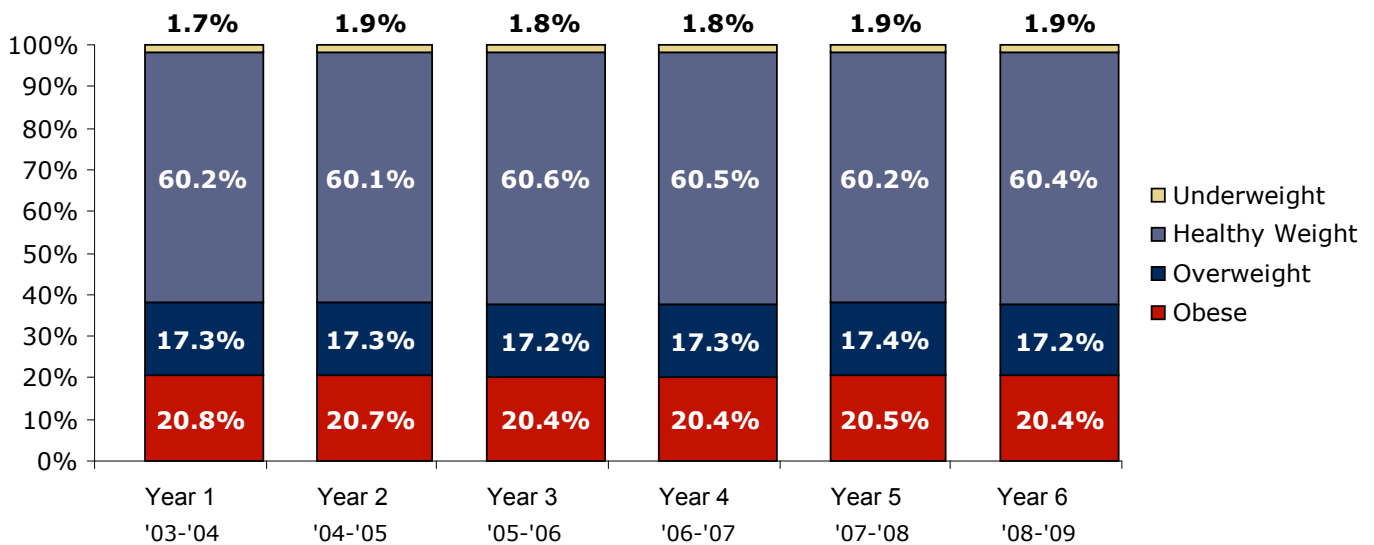
Statewide Results of the Arkansas BMI Assessments

The total public school enrollment in grades K, 2, 4, 6, 8 and 10 for the 2008-2009 school year, reported by the Arkansas Department of Education, was 221,583 students enrolled in 1,086 schools within 262 school districts. Statewide results presented in this section of the report are based only on the data from 179,007 individual students (enrolled in grades K, 2, 4, 6, 8 or 10) with valid BMI assessments that were reported prior to June 11, 2009 by 1,072 schools in 257 school districts.

BMI Classifications for All Students

Data from six consecutive years of BMI screenings reveal that the percentage of students in each of the four classifications (underweight, healthy weight, overweight and obese (as defined by the Centers for Disease Control and Prevention) has again remained level. Nearly 38 percent of Arkansas children and adolescents have a potential obesity problem and face health risks associated with being overweight.

Figure 2: 2008-2009 Trends in BMI Classification for Arkansas Public School Students (Students in Grades K, 2, 4, 6, 8 and 10)

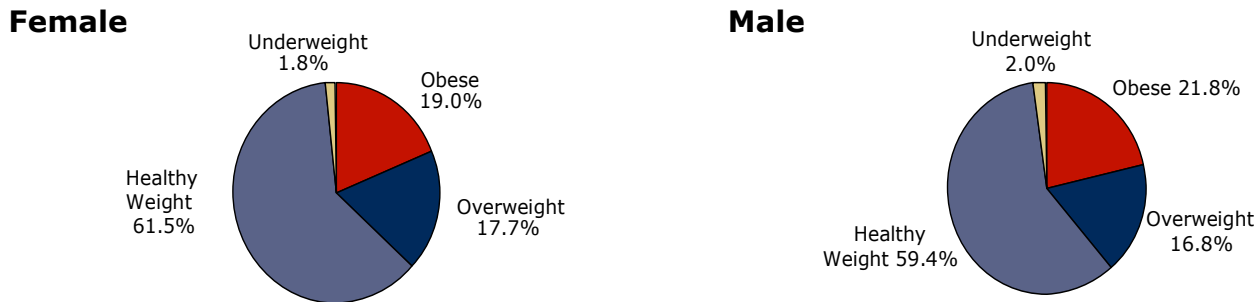


Results presented include all data for specified grades for years 1, 2, 3, 4, 5 and data received by June 11, 2009 for year 6 analysis.

BMI Classifications by Gender

Slightly more males (22 percent) than females (19 percent) were classified as obese. In the overweight classification there were more females (18 percent) than males (17 percent). The percentage of underweight students was similar for both genders (2 percent).

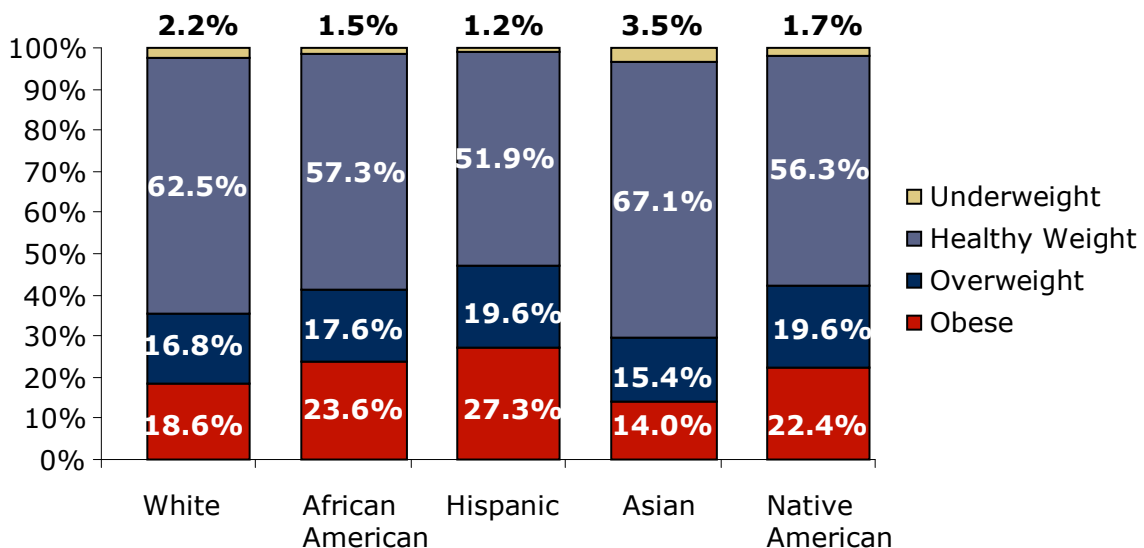
Figure 3: 2008-2009 BMI Classification by Gender
(Students in Grades K, 2, 4, 6, 8 and 10)



BMI Classifications by Ethnic Group

With 47 percent of Hispanic students classified as either obese or overweight, they had the highest obesity burden among students compared with Whites, African Americans, Asians, or Native Americans. Among Native American students, 42 percent were in the two highest risk categories, and 41 percent of African American students were obese or overweight. The percentage of White students who were obese or overweight was 35 percent and among Asian students 29 percent were classified as obese or overweight. Asians had the highest percentage of students classified as underweight at 3.5 percent.

Figure 4: 2008-2009 BMI Classification by Ethnic Group
(Students in Grades K, 2, 4, 6, 8 and 10)



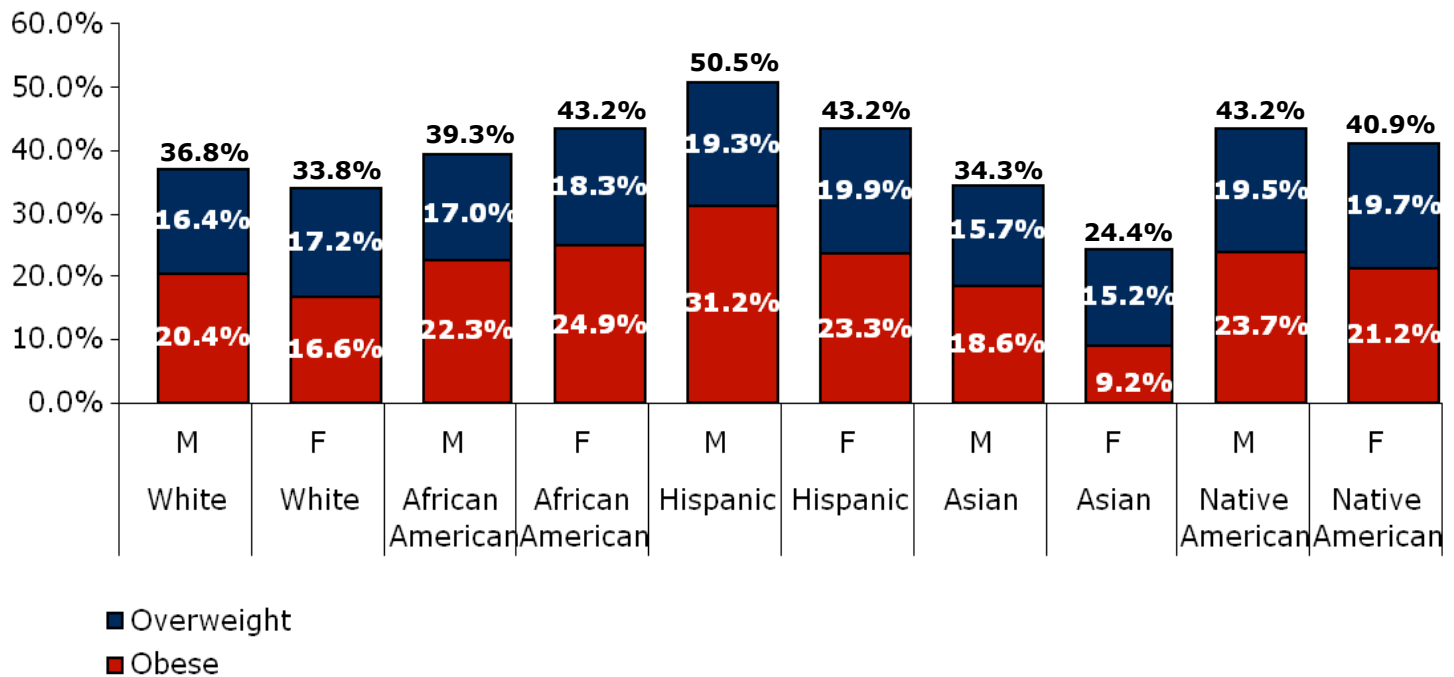
BMI Classifications by Gender and Ethnic Group

Hispanic males had the highest obesity risks when evaluating results by ethnic group and gender. More than half (50.5 percent) of Hispanic males were classified as obese or overweight. The obesity risk was slightly lower among Native American males (43 percent) and African American males (39 percent). The lowest risk among males was found in Whites (37 percent) and Asians (34 percent).

Among Hispanic and African American females, 43 percent of both groups were in the two highest risk categories, while 41 percent of Native American females, 34 percent of White females, and 24 percent of Asian females were classified as obese or overweight.

A higher percentage of males than females had BMI measurements in the two heaviest categories in all ethnic groups except African Americans. The greatest difference between males and females within an ethnic group was among Asian students where 24 percent of females were in the two heaviest categories compared to 34 percent of males.

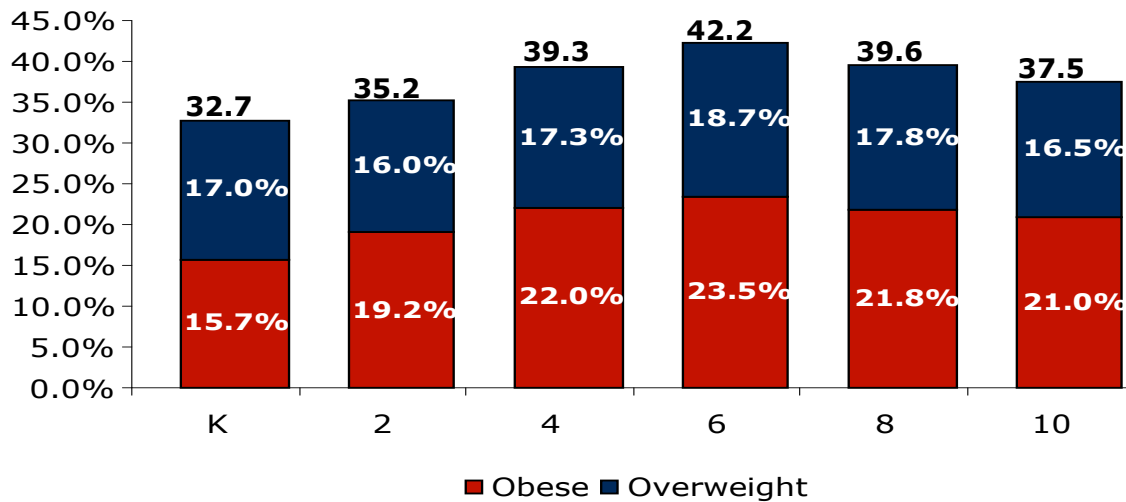
Figure 5: 2008-2009 BMI Percent of Students Classified as Obese or Overweight by Gender and Ethnic Group (Students in Grades K, 2, 4, 6, 8 and 10)



BMI Classifications by Grade

Data for grades K, 2, 4, 6, 8 and 10 show that 33 percent of kindergartners entered the school system either obese or overweight. The percentage of students who were obese or overweight increased to 35 percent for second-graders, to 39 percent for those in the fourth grade, and peaked at 42 percent with the sixth grade class. The prevalence of obesity diminishes slightly in subsequent years, down to 40 percent for eighth-graders and then to 37.5 percent for those in the tenth grade.

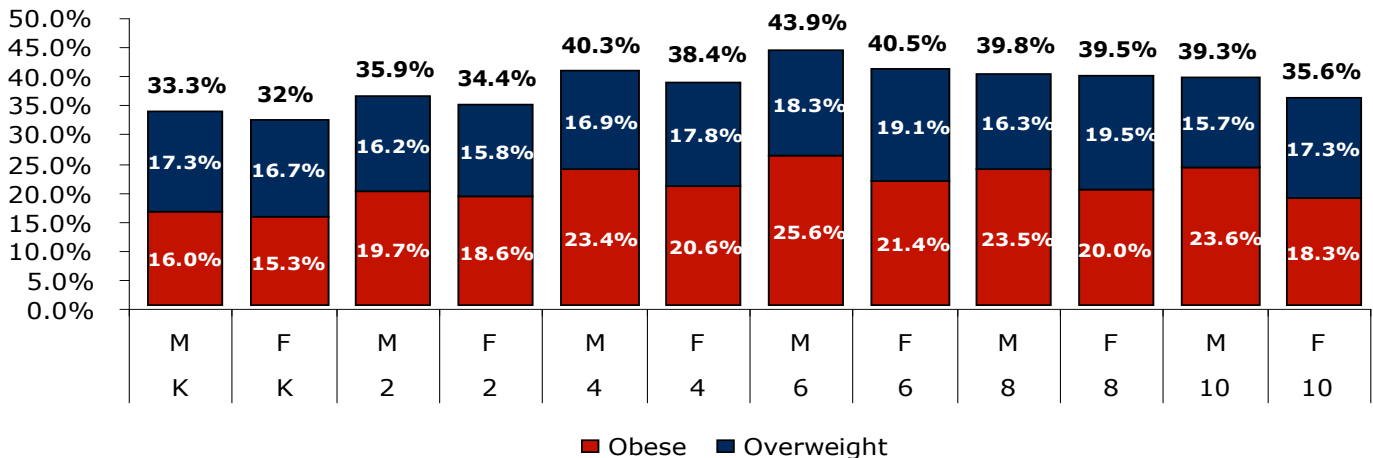
**Figure 6: 2008-2009 Percent of Students Classified as Obese or Overweight by Grade
(Students in Grades K, 2, 4, 6, 8 and 10)**



BMI Classifications by Gender and Grade

Across grades K, 2, 4, 6, 8 and 10, a greater percentage of males than females were classified as obese or overweight. The difference was most pronounced in the sixth grade where 44 percent of males and 40.5 percent of females were in the two heaviest risk categories.

**Figure 7: 2008-2009 Percent of Students Classified as Obese or Overweight by
Gender and Grade
(Students in Grades K, 2, 4, 6, 8 and 10)**

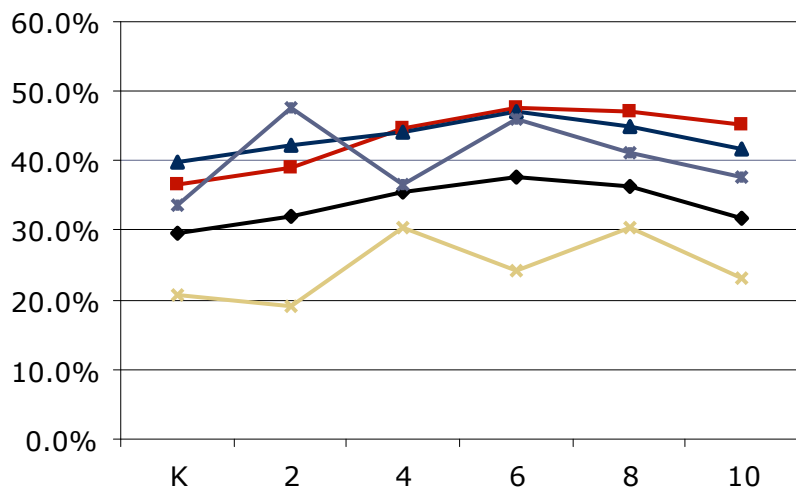


BMI Classifications by Gender, Ethnic Group and Grade

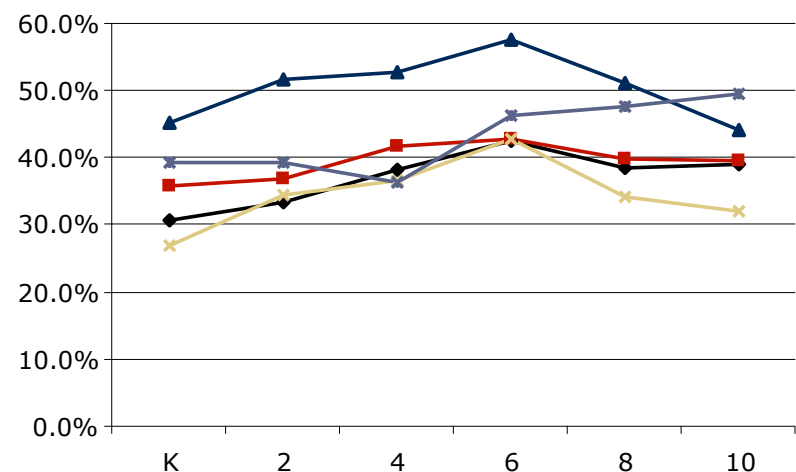
Analysis of the BMI assessments shows that some groups of students face a heightened risk for childhood obesity. The highest obesity rates were found among Hispanic males, especially in the sixth grade where nearly 60 percent were classified as overweight or obese.

Figure 8: 2008-2009 Percent of Students Classified as Obese or Overweight by Gender, Ethnic Group and Grade (Students in Grades K, 2, 4, 6, 8 and 10)

Female



Male



- ◆— White
- African American
- ▲— Hispanic
- ×— Asian
- *— Native American

Female						Male					
	White	African American	Hispanic	Asian	Native American		White	African American	Hispanic	Asian	Native American
K	29.6%	36.6%	39.8%	20.6%	33.7%	K	30.7%	35.9%	45.1%	26.8%	39.2%
2	32%	38.9%	42.3%	19.2%	47.5%	2	33.3%	36.8%	51.6%	34.3%	39.4%
4	35.5%	44.7%	44.1%	30.4%	36.7%	4	38.2%	41.6%	52.9%	36.3%	36.5%
6	37.6%	47.5%	47.1%	24.1%	45.9%	6	42.5%	42.9%	57.7%	42.7%	46.2%
8	36.3%	47.2%	44.9%	30.4%	41.1%	8	38.5%	39.7%	51.1%	34.2%	47.7%
10	31.8%	45.1%	41.6%	23.1%	37.6%	10	38.9%	39.6%	44.0%	31.9%	49.5%

School District Results

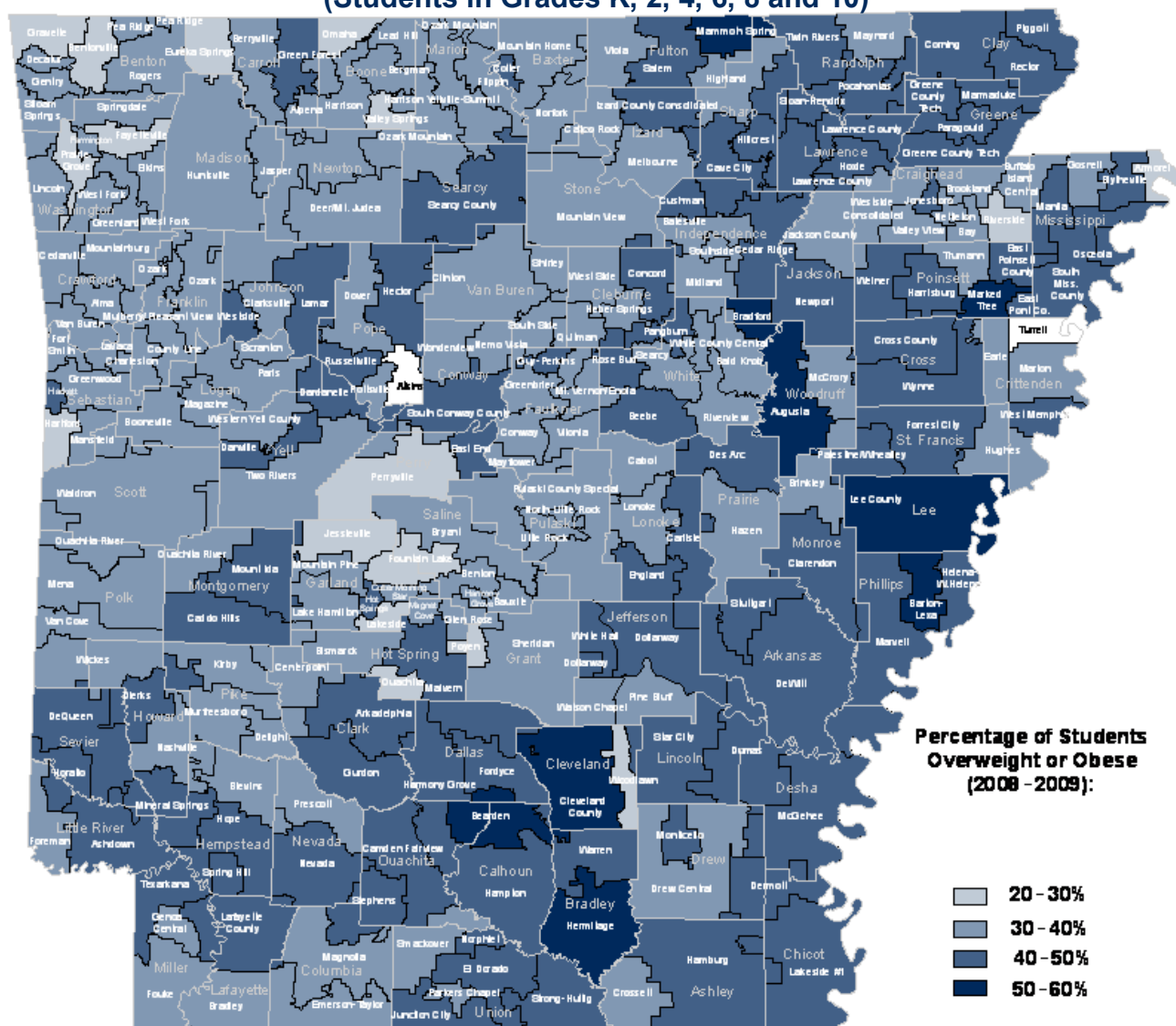
As shown on the map below, childhood obesity is a problem in every county in Arkansas. The map is shaded according to the magnitude of the percentage of students assessed as overweight or obese.. The lightest shade represents the districts with the lowest percentage (20-30 percent) and the darkest shade represents those with the highest percentage (50-60 percent) of students classified as overweight or obese.

Among the districts reporting results, 19 school districts had 20 to 30 percent of their students classified as overweight or obese, 134 school districts had rates of 30 to 40 percent, 92 school districts had rates of 40 to 50 percent, and 11 school districts had 50 percent or more of their students in the two highest risk categories.

Of the 19 school districts that fall within the lowest range for percentage of students classified as overweight or obese, six submitted BMI assessments for less than two-thirds of its students. Therefore, the map may not reflect accurate results for some of these school districts.

(Note that 13 districts including those with special school classifications are not displayed on the map because of their small geographic size.)

Map 2: 2008-2009 Percentage of Students Overweight or Obese by Arkansas Public School District (Students in Grades K, 2, 4, 6, 8 and 10)



Sources: Arkansas Center for Health Improvement, Arkansas Department of Education and Census TIGER Lines Files.

BMI Data Collection

Aggregate child BMI assessments presented in this report are an excellent indication of the extent of the current problem of childhood and adolescent obesity in Arkansas schools, school districts, and the state. The data presented in this report serve as a warning about the potential future health problems that Arkansans may face as these children become adults.

Process

As required by Act 1220 of 2003, student BMI measurements are taken by a trained school or student-health professional. The measurement process is conducted privately, with the child facing away from the scale. Results are entered into a secure, web-based computer system capable of generating individual, confidential Child Health Reports for parents once data are entered. All students in even-numbered grades, kindergarten through 10th, are measured unless the parent provides the school with a written refusal, or the child is absent from school.

Definition of BMI

The BMI is a ration of weight and height, and is a better assessment of obesity than weight alone. Using an accurate weight and height, BMI is calculated using the following formula:

$$\text{BMI} = \frac{\text{Weight in pounds}}{\text{Height in inches}} \times 703$$

Boys and girls grow and develop at different rates. Based upon Centers for Disease Control

and Prevention (CDC) recommendations, a BMI percentile for children is calculated individually for each boy and girl based upon his or her gender, age, height, and weight. BMI percentiles are then used to categorize children according to whether they are underweight, healthy weight, overweight, or obese.

A higher BMI indicates greater risk for having or developing obesity-related health problems. Health care professionals group BMI percentiles to categorize overweight children as follows.

Obese: BMI-for-age greater than or equal to 95th percentile.

Overweight: BMI-for-age between 85th and less than 95th percentiles.

Healthy Weight: BMI-for-age between 5th and less than 85th percentiles.

Underweight: BMI-for-age less than 5th

A BMI assessment is only a screening tool and an individual child's BMI should not be considered a final indicator of whether or not a child has a weight problem that requires attention. Further evaluation by a health professional is the recommended next step for a child who is classified as overweight or obese. However, BMI is the most widely accepted measurement used to screen for weight-related health problems. In a 2003 policy statement, the American Academy of Pediatrics recommended that every child every year have his or her BMI assessed. The Institute of Medicine in its 2005 report also recommended that schools conduct annual BMI assessments and make this information available to parents.

Overview of BMI Reports

Child Health Reports

Confidential Child Health Reports were generated and were made available through schools for each student's parent or guardian. The reports explained why Arkansas assesses students' BMIs, described the BMI screening process, educated parents about potential obesity-related health risks facing their children, and provided simple suggestions to help families improve nutrition and increase physical activity. Depending on the students' information, the report included the student's height, weight, and BMI and a classification as underweight, healthy weight, overweight, obese, or unable to assess. In addition, these five types of reports were translated into Spanish for those students whose records indicated that Spanish was the primary language spoken at home. Sample Child Health Reports are available on the ACHI website at www.achi.net.

School Reports

BMI profile reports are available on-line to each school once BMI data entry has been completed. These reports, which are also available on the ACHI website (www.achi.net), describe the extent to which the school is being affected by the obesity epidemic. BMI classifications for the school are presented for male and female students by grade and collectively for all students. BMI classification results for individual schools in Arkansas are presented in Appendix A.

School District Reports

School district reports combine information from all available school data in that district. Summary statistics for each school within the district and overall results for the district provide a community assessment of the environmental impact of obesity on public school students.

Additional information, similar to that included in the school report, is depicted using both tables and charts. (School district reports are available at www.achi.net.) Results for BMI classifications of students in individual school districts in Arkansas are presented in Appendix B.

Statewide Report

In this statewide report, results are presented for all students with a valid BMI. Additionally, results are presented by various demographic characteristics, including gender, ethnic group, and grade. Overall BMI classifications for students by county are shown in Appendix C.

Appendix A BMI Classification by County (2008-2009)

County	Under Weight	Healthy Weight	Overweight	Obese	Overweight or Obese
Arkansas	1.51%	56.57%	17.30%	24.62%	41.92%
Ashley	1.72%	58.29%	16.99%	23.00%	39.99%
Baxter	1.69%	61.46%	17.85%	19.00%	36.85%
Benton	2.27%	64.37%	16.43%	16.93%	33.36%
Boone	2.38%	62.41%	17.08%	18.13%	35.21%
Bradley	1.15%	51.09%	19.54%	28.22%	47.76%
Calhoun	56.00%		17.60%	26.40%	44.00%
Carroll	1.82%	58.11%	17.12%	22.96%	40.08%
Chicot	0.82%	56.48%	16.78%	25.92%	42.70%
Clark	1.15%	57.21%	16.98%	24.67%	41.65%
Clay	1.68%	54.02%	15.62%	28.68%	44.30%
Cleburne	2.21%	63.61%	16.03%	18.15%	34.18%
Cleveland	3.01%	56.20%	15.41%	25.38%	40.79%
Columbia	1.38%	60.05%	17.27%	21.31%	38.58%
Conway	1.19%	53.49%	18.54%	26.79%	45.33%
Craighead	2.36%	61.16%	16.46%	20.02%	36.48%
Crawford	2.21%	64.87%	15.26%	17.65%	32.91%
Crittenden	1.39%	58.75%	17.43%	22.42%	39.85%
Cross	2.04	56.40%	16.94%	24.62%	41.56%
Dallas	1.56	54.46%	19.20%	24.78%	43.98%
Desha	1.97	55.31%	18.32%	24.40%	42.72%
Drew	2.21	56.94%	18.89%	21.96%	40.85%
Faulkner	2.11	63.73%	16.51%	17.66%	34.17%
Franklin	2.59	60.92%	16.81%	19.68%	36.49%
Fulton	1.53	55.92%	19.08%	23.47%	42.55%
Garland	2.43	62.47%	16.86%	18.24%	35.10%
Grant	2.39	63.15%	16.87%	17.59%	34.46%
Greene	1.22	57.39%	18.43%	22.97%	41.40%
Hempstead	1.98	56.84%	16.26%	24.92%	41.18%
Hot spring	2.02	58.27%	17.55%	22.15%	39.70%
Howard	2.4	57.24%	18.98%	21.38%	40.36%
Independence	2.25	59.14%	17.61%	21.01%	38.62%
Izard	1.8	58.53%	16.77%	22.90%	39.67%
Jackson	1.91	54.30%	19.45%	24.34%	43.79%
Jefferson	1.3	58.36%	17.54%	22.80%	40.34%
Johnson	1.4	57.73%	17.63%	23.23%	40.86%
Lafayette	2.14	57.26%	19.23%	21.37%	40.60%
Lawrence	1.60%	53.21%	19.96%	25.22%	45.18%
Lee	48.78%		19.65%	31.57%	51.22%
Lincoln	1.97%	53.95%	17.76%	26.32%	44.08%
Little River	0.89%	57.49%	20.56%	21.07%	41.63%
Logan	1.89%	63.02%	15.75%	19.34%	35.09%
Lonoke	2.05%	62.84%	16.72%	18.39%	35.11%
Madison	2.46%	66.43%	15.63%	15.48%	31.11%
Marion	1.38%	61.43%	17.49%	19.70%	37.19%
Miller	1.48%	59.13%	17.95%	21.45%	39.40%
Mississippi	2.08%	56.44%	17.58%	23.91%	41.49%
Monroe	2.14%	57.00%	15.76%	25.10%	40.86%
Montgomery	1.21%	57.77%	21.36%	19.66%	41.02%
Nevada	2.03%	58.24%	20.32%	19.41%	39.73%

County	Under Weight	Healthy Weight	Overweight	Obese	Overweight or Obese
Jefferson	1.3	58.36%	17.54%	22.80%	40.34%
Johnson	1.4	57.73%	17.63%	23.23%	40.86%
Lafayette	2.14	57.26%	19.23%	21.37%	40.60%
Lawrence	1.60%	53.21%	19.96%	25.22%	45.18%
Lee	48.78%		19.65%	31.57%	51.22%
Lincoln	1.97%	53.95%	17.76%	26.32%	44.08%
Little River	0.89%	57.49%	20.56%	21.07%	41.63%
Logan	1.89%	63.02%	15.75%	19.34%	35.09%
Lonoke	2.05%	62.84%	16.72%	18.39%	35.11%
Madison	2.46%	66.43%	15.63%	15.48%	31.11%
Marion	1.38%	61.43%	17.49%	19.70%	37.19%
Miller	1.48%	59.13%	17.95%	21.45%	39.40%
Mississippi	2.08%	56.44%	17.58%	23.91%	41.49%
Monroe	2.14%	57.00%	15.76%	25.10%	40.86%
Montgomery	1.21%	57.77%	21.36%	19.66%	41.02%
Nevada	2.03%	58.24%	20.32%	19.41%	39.73%
Newton	1.74%	61.61%	17.35%	19.31%	36.66%
Ouachita	1.58%	55.87%	17.90%	24.65%	42.55%
Perry	1.79%	62.15%	14.94%	21.12%	36.06%
Phillips	0.72%	52.41%	17.03%	29.84%	46.87%
Pike	2.23%	63.26%	16.70%	17.81%	34.51%
Poinsett	2.05%	54.32%	18.05%	25.57%	43.62%
Polk	2.21%	62.89%	16.85%	18.05%	34.90%
Pope	1.55%	58.68%	18.48%	21.29%	39.77%
Prairie	58.43%		17.28%	24.28%	41.56%
Pulaski	2.06%	61.78%	17.10%	19.05%	36.15%
Randolph	2.16%	56.33%	18.95%	22.55%	41.50%
Saline	2.27%	63.36%	16.41%	17.96%	34.37%
Scott	1.46%	59.87%	19.26%	19.42%	38.68%
Searcy	1.24%	57.45%	17.38%	23.94%	41.32%
Sebastian	2.17%	62.36%	16.83%	18.64%	35.47%
Sevier	1.16%	54.19%	18.58%	26.07%	44.65%
Sharp	2.83%	57.85%	17.35%	21.98%	39.33%
St. Francis	1.81%	56.97%	19.23%	21.98%	41.21%
Stone	1.61%	61.26%	16.89%	20.24%	37.13%
Union	1.44%	56.72%	18.08%	23.76%	41.84%
Van Buren	2.02%	62.86%	18.45%	16.67%	35.12%
Washington	1.88%	63.88%	17.01%	17.22%	34.23%
White	1.95%	58.01%	18.31%	21.72%	40.03%
Woodruff	54.66%		16.95%	28.40%	45.35%
Yell	2.37%	57.43%	17.16%	23.05%	40.21%

Appendix B BMI Classification by School District (2008-2009)

District Name	District LEA	Under Weight	Healthy Weight	Over-weight	Obese	Overweight or Obese
Academics Plus School District	6040700	68.51%		14.36%	17.13%	31.49%
Alma School District	1701000	4.56%	64.41%	14.47%	16.56%	31.03%
Alpena School District	0501000	60.89%		18.45%	20.66%	39.11%
Ark. School for the Deaf	6092000	80.95%		19.04%		19.04%
Arkadelphia School District	1002000	1.44%	57.55%	17.03%	23.98%	41.01%
Arkansas Virtual Academy	6043700	6.73%	68.27%	9.62%	15.38%	25.00%
Armored School District	4701000	3.08%	67.18%	14.36%	15.38%	29.74%
Ashdown School District	4101000	0.99%	56.09%	22.37%	20.56%	42.93%
Augusta School District	7401000	48.19%		19.69%	32.12%	51.81%
Bald Knob School District	7301000	62.94%		16.86%	20.20%	37.06%
Barton-Lexa School District	5401000	48.85%		19.08%	32.08%	51.16%
Batesville School District	3201000	2.52%	60.45%	16.13%	20.90%	37.03%
Bauxite School District	6301000	1.60%	61.20%	19.60%	17.60%	37.20%
Bay School District	1601000	3.35%	62.68%	14.35%	19.62%	33.97%
Bearden School District	5201000	47.11%		17.78%	35.11%	52.89%
Beebe School District	7302000	1.56%	53.89%	19.47%	25.08%	44.55%
Benton County School Of Arts	0440700	2.13%	67.23%	15.32%	15.32%	30.64%
Benton School District	6302000	2.63%	62.49%	16.39%	18.48%	34.87%
Bentonville School District	0401000	2.48%	70.19%	14.58%	12.75%	27.33%
Bergman School District	0502000	3.56%	59.80%	18.22%	18.42%	36.64%
Berryville School District	0801000	2.46%	60.30%	16.04%	21.19%	37.23%
Bismarck School District	3001000	2.20%	62.26%	18.46%	17.08%	35.54%
Blevins School District	2901000	2.13%	60.43%	14.89%	22.55%	37.44%
Blytheville School District	4702000	2.20%	55.01%	18.36%	24.43%	42.79%
Booneville School District	4201000	2.77%	65.25%	14.42%	17.56%	31.98%
Bradford School District	7303000	49.49%		21.21%	29.29%	50.50%
Bradley School District	3701000	60.63%		20.62%	18.75%	39.37%
Brinkley School District	4801000	2.99%	57.09%	15.67%	24.25%	39.92%
Brookland School District	1603000	1.34%	58.93%	17.86%	21.88%	39.74%
Bryant School District	6303000	2.32%	64.44%	15.88%	17.36%	33.24%
Buffalo is. Central School District	1605000	3.01%	57.81%	15.07%	24.11%	39.18%

District Name	District LEA	Under Weight	Healthy Weight	Over-weight	Obese	Overweight or Obese
Cabot School District	4304000	2.12%	65.04%	16.69%	16.15%	32.84%
Caddo Hills School District	4901000	58.93%		22.32	18.75%	41.07%
Calico Rock School District	3301000	62.64%		12.09%	25.27%	37.36%
Camden Fairview School District	5204000	1.57%	58.38%	19.12%	20.92%	40.04%
Carlisle School District	4303000	1.86%	57.62%	18.59%	21.93%	40.52%
Cave City School District	6802000	1.78%	53.07%	20.59%	24.55%	45.14%
Cedar Ridge School District	3212000	1.60%	52.72%	20.77%	24.92%	45.69%
Cedarville School District	1702000	68.92%		13.51%	17.57%	31.08%
Centerpoint School District	5502000	3.35%	62.28%	17.63%	16.74%	34.37%
Charleston School District	2402000	2.74%	64.93%	14.52%	17.81%	32.33%
Clarendon School District	4802000	58.13%		15.85%	26.02%	41.87%
Clarksville School District	3601000	1.41%	58.87%	18.03%	21.69%	39.72%
Cleveland County School District	1305000	1.61%	46.95%	17.68%	33.76%	51.44%
Clinton School District	7102000	1.58%	61.54	19.53%	17.36%	36.89%
Concord School District	1201000	3.69%	56.22%	17.51%	22.58%	40.09%
Conway School District	2301000	2.54%	63.25%	16.52%	17.69%	34.21%
Corning School District	1101000	2.21%	54.02%	16.06%	27.71%	43.77%
Cotter School District	0302000	2.18%	54.91%	16.73%	26.18%	42.91%
County Line School District	2403000	61.32%		16.98%	21.70%	38.68%
Covenant Keepers Charter School	6044700	67.06%		14.12%	18.82%	32.94%
Cross County School District	1901000	2.38%	49.21%	19.05%	29.37%	48.42%
Crossett School District	0201000	2.37%	58.42%	15.79%	23.42%	39.21%
Cushman School District	3203000	58.16%		23.47%	18.37%	41.84%
Cutter-Morning Star School District	2601000	2.90%	61.00%	16.18%	19.92%	36.10%
Danville School District	7503000	51.32%		20.72%	27.96%	48.68%
Dardanelle School District	7504000	2.51%	56.27%	18.17%	23.06%	41.23%
Decatur School District	0402000	2.34%	61.21%	17.76%	18.69%	36.45%
Deer-Mt.Judea School District	5106000	61.54%		22.31%	16.15%	38.46%
Delight School District	5501000	60.63%		16.54%	22.83%	39.37%
DeQueen School District	6701000	1.37%	53.88%	18.17%	26.58%	44.75%
Dermott School District	0901000	58.17%		17.79%	24.04%	41.83%
Des Arc School District	5901000	56.30%		20.17%	23.53%	43.70%
Dewitt School District	0101000	1.48%	57.05%	16.39%	25.08%	41.47%
Dierks School District	3102000	54.25%		25.00%	20.74%	45.74%

District Name	District LEA	Under Weight	Healthy Weight	Over-weight	Obese	Overweight or Obese
Dollarway School District	3502000	1.62%	54.85%	19.00%	24.53%	43.53%
Dover School District	5802000	2.72%	58.98%	17.24%	21.05%	38.29%
Dreamland Academy	6042700	65.58%		11.48%	22.95%	34.43%
Drew Central School District	2202000	1.62%	58.92%	15.95%	23.51%	39.46%
Dumas School District	2104000	1.36%	55.51%	17.95%	25.19%	43.14%
Earle School District	1802000	1.68%	61.74%	16.78%	19.80%	36.58%
East End School District	5301000	2.68%	53.12%	20.09%	24.11%	44.20%
East Poinsett Co. School District	5608000	1.71%	55.14%	18.29%	24.86%	43.15%
El Dorado School District	7001000	1.33%	56.57%	16.74%	25.36%	42.10%
Elkins School District	7201000	63.82%		20.78%	15.40%	36.18%
Emerson-Taylor School District	1408000	65.54%		14.98%	19.48%	34.46%
England School District	4302000	1.85%	50.92%	15.57%	31.66%	47.23%
Estem Elementary Public Charter	6045700	2.76%	59.45%	17.97%	19.82%	37.79%
Estem Middle Public Charter	6046700	3.72%	55.32%	18.62%	22.34%	40.96%
Eureka Springs School District	0802000	71.14%		13.42%	15.44%	28.86%
Farmington School District	7202000	1.60%	66.67%	16.78%	14.95%	31.73%
Fayetteville School District	7203000	2.58%	68.99%	15.68%	12.75%	28.43%
Flippin School District	4501000	1.88%	62.37%	17.47%	18.28%	35.75%
Fordyce School District	2002000	1.56%	54.46%	19.20%	24.78%	43.98%
Foreman School District	4102000	62.78%		14.44%	22.78%	37.22%
Forrest City School District	6201000	1.97%	57.84%	19.14%	21.05%	40.19%
Fort Smith School District	6601000	2.12%	61.78%	16.73%	19.37%	36.10%
Fouke School District	4603000	1.33%	60.89%	18.67%	19.11%	37.78%
Fountain Lake School District	2602000	1.41%	69.49%	16.38%	12.71%	29.09%
Genoa Central School District	4602000	1.56%	61.82%	20.26%	16.36%	36.62%
Gentry School District	0403000	1.68%	61.01%	20.71%	16.60%	37.31%
Glen Rose School District	3002000	3.36%	66.44%	11.74%	18.46%	30.20%
Gosnell School District	4708000	2.98%	63.51%	16.14%	17.37%	33.51%
Gravette School District	0404000	2.46%	73.15%	13.42%	10.96%	24.38%
Green Forest School District	0803000	1.11%	51.21%	19.85%	27.83%	47.68%
Greenbrier School District	2303000	1.97%	65.89%	15.65%	16.49%	32.14%

District Name	District LEA	Under Weight	Healthy Weight	Over-weight	Obese	Overweight or Obese
Greene Co. Tech School District	2807000	1.15%	58.09%	18.57%	22.19%	40.76%
Greenland School District	7204000	65.20%	17.62%	17.18%	34.80%	
Greenwood School District	6602000	2.15%	65.63%	15.95%	16.27%	32.22%
Gurdon School District	1003000	56.57%	16.84%	26.60%	43.44%	
Guy-Perkins School District	2304000	53.99%	21.47%	24.54%	46.01%	
Hackett School District	6603000	53.75%	22.92%	23.33%	46.25%	
Hamburg School District	0203000	1.06%	58.17%	18.19%	22.58	40.77%
Hampton School District	0701000	56.00%	17.60%	26.40%	44.00%	
Harmony Grove School District	5205000	57.47%	16.36%	26.17%	42.53%	
Harmony Grove School District	6304000	62.39%	16.62%	20.99%	37.61%	
Harrisburg School District	5602000	1.14%	52.39%	18.68%	27.79%	46.47%
Harrison School District	0503000	2.21%	61.14%	17.43%	19.22%	36.65%
Hartford School District	6604000	7.48%	65.31%	10.20%	17.01%	27.21%
Hazen School District	5903000	60.48%	14.52%	25.00%	39.52%	
Heber Springs School District	1202000	1.87%	66.89%	14.77%	16.47%	31.24%
Hector School District	5803000	2.13%	57.45%	15.74%	24.68%	40.42%
Helena-W.Helena School District	5403000	0.88%	52.98%	16.72%	29.42%	46.14%
Hermitage School District	0601000	49.24%	19.70%	31.06%	50.76%	
Highland School District	6804000	4.16%	63.36%	13.44%	19.04%	32.48%
Hillcrest School District	3809000	53.50%	19.50%	27.00%	46.50%	
Hope Academy	3540700	35.71%	21.43%	42.86%	64.29%	
Hope School District	2903000	2.20%	56.04%	16.03%	25.73%	41.76%
Horatio School District	6703000	55.61%	19.79%	24.60%	44.39%	
Hot Springs School District	2603000	1.75%	58.16%	18.08%	22.00%	40.08%
Hoxie School District	3804000	1.72%	51.55%	18.90%	27.84%	46.74%
Hughes School District	6202000	61.49%	18.39%	20.11%	38.50%	
Huntsville School District	4401000	2.46%	66.43%	15.63%	15.48%	31.11%
Imboden Charter School District	3840700	61.76%	23.53%	14.71%	38.24%	
Izard Co. Cons. School District	3306000	56.95%	15.22%	27.83%	43.05%	
Jackson Co. School District	3405000	61.21%	17.79%	21.00%	38.79%	
Jasper School District	5102000	2.11%	61.93%	15.41%	20.54%	35.95%
Jessieville School District	2604000	5.74%	66.77%	13.90%	13.60%	27.50%
Jonesboro School District	1608000	1.09%	58.53%	17.85%	22.53%	40.38%
Junction City School District	7003000	59.44%	18.53%	22.03%	40.56%	
Kipp-Delta College Prep School	5440700	48.44%	18.75%	32.81%	51.56%	
Kirby School District	5503000	67.58%	13.74%	18.68%	32.42%	
Lafayette County School District	3704000	2.27%	56.49%	18.51%	22.73%	41.24%

District Name	District LEA	Under Weight	Healthy Weight	Over-weight	Obese	Overweight or Obese
Lake Hamilton School District	2605000	1.39%	61.07%	18.59%	18.94%	37.53%
Lakeside School District	0903000	1.14%	55.81%	16.38%	26.67%	43.05%
Lakeside School District	2606000	3.98%	66.17%	14.89%	14.96%	29.85%
Lamar School District	3604000	59.43%		16.41%	24.17%	40.58%
Lavaca School District	6605000	2.08%	63.90%	16.88%	17.14%	34.02%
Lawrence County School District	3810000	2.09%	54.19%	20.68%	23.04%	43.72%
Lead Hill School District	0506000	64.33%		17.20%	18.47%	35.67%
Lee County School District	3904000	48.78%		19.65%	31.57%	51.22%
Lincoln School District	7205000	1.56%	64.42%	15.84%	18.18%	34.02%
Lisa Academy	6041700	4.37%	60.26%	20.96%	14.41%	35.37%
Lisa Academy North	6048700	65.95%		15.68%	18.38%	34.06%
Little Rock School District	6001000	1.82%	60.63%	17.83%	19.72%	37.55%
Lonoke School District	4301000	1.82%	59.10%	16.81%	22.27%	39.08%
Magazine School District	4202000	65.39%		16.54%	18.08%	34.62%
Magnet Cove School District	3003000	2.17%	65.65%	16.52%	15.65%	32.17%
Magnolia School District	1402000	1.34%	59.02%	17.85%	21.79%	39.64%
Malvern School District	3004000	1.36%	49.49%	20.43%	28.72%	49.15%
Mammoth Spring School District	2501000	46.27%		17.91%	35.82%	53.73%
Manila School District	4712000	1.49%	54.26%	18.30%	25.96%	44.26%
Mansfield School District	6606000	1.61%	62.26%	20.32%	15.81%	36.13%
Marion School District	1804000	1.04%	59.63%	18.41%	20.91%	39.32%
Marked Tree School District	5604000	45.64%		20.75%	33.61%	54.36%
Marmaduke School District	2803000	58.99%		19.42%	21.58%	41.00%
Marvell School District	5404000	57.51%		15.03%	27.45%	42.48%
Mayflower School District	2305000	1.14%	59.82%	18.72%	20.32%	39.04%
Maynard School District	6102000	68.37%		14.80%	16.84%	31.64%
Mccrory School District	7403000	60.17%		14.60%	25.22%	39.82%
Mcgehee School District	2105000	2.77%	55.05%	18.81%	23.37%	42.18%
Melbourne School District	3302000	2.34%	59.38%	21.48%	16.80%	38.28%
Mena School District	5703000	2.14%	62.25%	17.27%	18.34%	35.61%
Midland School District	3211000	60.10%		17.24%	22.66%	39.90%
Mineral Springs School District	3104000	6.74%	51.30%	16.58%	25.39%	41.97%
Monticello School District	2203000	2.48%	56.02%	20.25%	21.24%	41.49%
Mount Ida School District	4902000	59.05%		20.21%	20.74%	40.95%
Mountain Home School District	0303000	1.53%	62.99%	18.03%	17.45%	35.48%

District Name	District LEA	Under Weight	Healthy Weight	Over-weight	Obese	Overweight or Obese
Mountain Pine School District	2607000		62.61%	15.22%	22.17%	37.39%
Mountain View School District	6901000	1.61%	61.26%	16.89%	20.24%	37.13%
Mountainburg School District	1703000		68.08%	17.31%	14.62%	31.93%
Mt. Vernon-Enola School District	2306000		63.25%	16.27%	20.48%	36.75%
Mulberry School District	1704000		64.60%	15.53%	19.88%	35.41%
Murfreesboro School District	5504000		66.23%	17.32%	16.45%	33.77%
N. Little Rock School District	6002000	1.89%	62.34%	16.96%	18.80%	35.76%
Nashville School District	3105000	1.51%	60.12%	17.98%	20.39%	38.37%
Nemo Vista School District	1503000		65.31%	15.82%	18.88%	34.70%
Nettleton School District	1611000	3.21%	64.44%	14.97%	17.38%	32.35%
Nevada School District	5008000		54.43%	20.25%	25.32%	45.57%
Newport School District	3403000	2.12%	51.97%	20.15%	25.76%	45.91%
Norfork School District	0304000		60.24%	18.07%	21.69%	39.76%
Norphlet School District	7006000		57.41%	17.13%	25.46%	42.59%
Omaha School District	0504000		71.02%	16.67%	12.32%	28.99%
Osceola School District	4713000	2.66%	49.53%	19.92%	27.89%	47.81%
Ouachita River School District	5706000	2.70%	62.16%	15.83%	19.31%	35.14%
Ouachita School District	3005000	2.44%	68.78%	13.17%	15.61%	28.78%
Ozark Mountain School District	6505000		67.40%	12.78%	19.82%	32.60%
Ozark School District	2404000	2.70%	59.51%	17.79%	20.00%	37.79%
Palestine-Wheatley School District	6205000		51.77%	20.21%	28.01%	48.22%
Pangburn School District	7309000	3.11%	56.40%	19.38%	21.11%	40.49%
Paragould School District	2808000	1.46%	56.46%	18.08%	24.00%	42.08%
Paris School District	4203000	1.21%	59.96%	17.10%	21.73%	38.83%
Parkers Chapel School District	7007000		60.76%	23.96%	15.28%	39.24%
Pea Ridge School District	0407000	1.67%	60.72%	15.88%	21.73%	37.61%
Perryville School District	5303000		70.50%	10.79%	18.71%	29.50%
Piggott School District	1104000	1.73%	54.70%	14.60%	28.96%	43.56%
Pine Bluff School District	3505000	1.38%	58.82%	17.45%	22.34%	39.79%
Pocahontas School District	6103000	2.45%	53.55%	20.00%	24.00%	44.00%
Pottsville School District	5804000	1.01%	59.25%	20.81%	18.93%	39.74%
Poyen School District	2703000	4.00%	69.14%	11.43%	15.43%	26.86%
Prairie Grove School District	7206000	1.82%	71.22%	14.39%	12.57%	26.96%
Prescott School District	5006000	1.92%	59.62%	20.33%	18.13%	38.46%

District Name	District LEA	Under Weight	Healthy Weight	Over-weight	Obese	Overweight or Obese
Pulaski Co. Spec. School District	6003000	2.32%	63.09%	16.29%	18.30%	34.59%
Quitman School District	1203000		62.13%	16.54%	21.32%	37.86%
Rector School District	1106000		53.24%	16.45%	30.30%	46.75%
Riverside School District	1613000		72.00%	13.71%	14.29%	28.00%
Riverview School District	7307000	1.79%	59.19%	18.39%	20.63%	39.02%
Rogers School District	0405000	2.30%	59.67%	17.65%	20.37%	38.02%
Rose Bud School District	7310000		59.87%	21.40%	18.73%	40.13%
Russellville School District	5805000	1.34%	58.55%	18.33%	21.78%	40.11%
Salem School District	2502000	1.69%	56.27%	21.02%	21.02%	42.04%
Scranton School District	4204000		65.20%	14.92%	19.89%	34.81%
Searcy County School District	6502000		52.82%	20.47%	26.71%	47.18%
Searcy School District	7311000	2.97%	61.58%	16.24%	19.21%	35.45%
Sheridan School District	2705000	2.21%	62.51%	17.46%	17.82%	35.28%
Shirley School District	7104000		67.44%	14.73%	17.83%	32.56%
Siloam Springs School District	0406000	1.97%	61.96%	17.75%	18.32%	36.07%
Sloan-Hendrix School District	3806000		54.42%	20.00%	25.58%	45.58%
Smackover School District	7008000	3.83%	56.23%	20.77%	19.17%	39.94%
So. Conway Co. School District	1507000	0.76%	49.68%	19.92%	29.63%	49.55%
So. Miss. County School District	4706000		57.60%	15.38%	27.02%	42.40%
South Side School District	7105000	2.45%	65.20%	18.14%	14.22%	32.36%
Southside School District	3209000	2.81%	60.52%	18.04%	18.64%	36.68%
Spring Hill School District	2906000		57.53%	19.35%	23.12%	42.47%
Springdale School District	7207000	1.77%	60.57%	17.66%	19.99%	37.65%
Star City School District	4003000	1.97%	53.95%	17.76%	26.32%	44.08%
Stephens School District	5206000	3.09%	54.94%	15.43%	26.54%	41.97%
Strong-Huttig School District	7009000		53.21%	17.89%	28.90%	46.79%
Stuttgart School District	0104000	1.53%	56.19%	18.01%	24.27%	42.28%
Texarkana School District	4605000	1.50%	58.08%	17.25%	23.17%	40.42%
Trumann School District	5605000	3.73%	57.68%	16.10%	22.50%	38.60%
Twin Rivers School District	6806000		51.38%	22.92%	25.69%	48.61%
Two Rivers School District	7510000	4.13%	64.76%	11.43%	19.68%	31.11%
Valley Springs School District	0505000	2.50%	69.00%	13.75%	14.75%	28.50%
Valley View School District	1612000	3.22%	65.81%	14.15%	16.83%	30.98%
Van Buren School District	1705000	1.95%	64.19%	15.55%	18.32%	33.87%

District Name	District LEA	Under Weight	Healthy Weight	Over-weight	Obese	Overweight or Obese
Van Cove School District	5704000	63.63%	15.76%	20.61%	36.37%	
Vilonia School District	2307000	1.53%	66.58%	15.72%	16.17%	31.89%
Viola School District	2503000	61.11%	16.05%	22.84%	38.89%	
Waldron School District	6401000	1.46%	59.87%	19.26%	19.42%	38.68%
Warren School District	0602000	1.23%	51.61%	19.51%	27.65%	47.16%
Watson Chapel School District	3509000	1.19%	60.70%	15.45%	22.66%	38.11%
Weiner School District	5607000	58.39%	20.13%	21.48%	41.61%	
West Fork School District	7208000	66.23%	17.27%	16.49%	33.76%	
West Memphis School District	1803000	1.61%	57.71%	16.80%	23.88%	40.68%
West Side School District	1204000	69.66%	17.93%	12.41%	30.34%	
Western Yell Co. School District	7509000	63.45%	16.55%	20.00%	36.55%	
Westside Cons. School District	1602000	3.90%	57.96%	18.92%	19.22%	38.14%
Westside School District	3606000	2.61%	52.99%	18.66%	25.75%	44.41%
White Co. Central School District	7304000	62.21%	17.97%	19.82%	37.79%	
White Hall School District	3510000	1.15%	57.56%	19.03%	22.26%	41.29%
Wickes School District	5705000	1.88%	65.83%	17.24%	15.05%	32.29%
Wonderview School District	1505000	3.21%	58.29%	15.51%	22.99%	38.50%
Woodlawn School District	1304000	4.98%	69.23%	12.22%	13.57%	25.79%
Wynne School District	1905000	1.97%	57.83%	16.52%	23.68%	40.20%
Yellville-Summit School District	4502000	61.30%	17.51%	21.19%	38.70%	

Appendix C BMI Classification by School (2008-2009)

District Name	District LEA	School Name	School LEA	Under Weight	Healthy Weight	Over-weight	Obese	Over-weight or Obese
Academics Plus	6040700	Academics Plus	6040702		69.43%	14.65%	15.92%	30.57%
Academics Plus	6040700	Academics Plus	6040703		62.50%	37.50%		37.50%
Alma	1701000	Alma High	1701002		65.71%	10.48%	23.81%	34.29%
Alma	1701000	Alma Intermediate	1701001	3.11%	66.32%	12.95%	17.62%	30.57%
Alma	1701000	Alma Primary	1701004	6.15%	63.10%	15.95%	14.81%	30.76%
Alpena	0501000	Alpena Elementary	0501001		61.96%	18.48%	19.57%	38.05%
Alpena	0501000	Alpena High	0501002		58.62%	18.39%	22.99%	41.38%
Ark. School for the Deaf	6092000	Ark. School for the Deaf Elem.	6092001		81.58%	18.42%		18.42%
Arkadelphia	1002000	Arkadelphia High	1002010		58.62%	11.21%	30.17%	41.38%
Arkadelphia	1002000	Central Primary	1002006	5.70%	62.03%	10.13%	22.15%	32.28%
Arkadelphia	1002000	Goza Middle	1002009		53.36%	20.52%	26.12%	46.64%
Arkadelphia	1002000	Louisa Perritt Primary	1002007		64.63%	20.41%	14.97%	35.38%
Arkadelphia	1002000	Peake Elementary	1002008		54.48%	19.31%	26.21%	45.52%
Arkansas Virtual Academy	6043700	Arkansas Virtual Academy	6043701	6.52%	67.39%	8.70%	17.39%	26.09%
Armored	4701000	Armored Elementary	4701001	3.79%	68.18%	12.12%	15.91%	28.03%
Armored	4701000	Armored High	4701002		66.67%	19.05%	14.29%	33.34%
Ashdown	4101000	Ashdown High	4101004		59.80%	24.51%	15.69%	40.20%
Ashdown	4101000	Ashdown Junior High	4101003		60.27%	20.09%	19.65%	39.74%
Ashdown	4101000	C. D. Franks Elementary	4101002		48.86%	22.73%	28.41%	51.14%
Ashdown	4101000	L.F. Henderson Intermediate	4101001		54.64%	24.74%	20.62%	45.36%
Ashdown	4101000	Margaret Daniels Primary	4101005		56.52%	22.83%	20.65%	43.48%
Augusta	7401000	Augusta Elementary	7401001		50.68%	19.59%	29.73%	49.32%
Augusta	7401000	Augusta High	7401003		41.38%	24.14%	34.48%	58.62%
Augusta	7401000	Cotton Plant Elementary	7401007		37.50%	62.50%		62.50%
Bald Knob	7301000	Bald Knob High	7301003		64.52%	14.52%	20.97%	35.49%
Bald Knob	7301000	Bald Knob Middle	7301004		58.69%	17.37%	23.95%	41.32%
Bald Knob	7301000	H.L. Lubker Elementary	7301001		65.12%	17.08%	17.79%	34.87%
Barton-Lexa	5401000	Barton Elementary	5401002		50.22%	21.33%	28.44%	49.77%
Barton-Lexa	5401000	Barton High	5401003		46.28%	14.88%	38.84%	53.72%
Batesville	3201000	Batesville High	3201005		61.59%	17.07%	21.34%	38.41%
Batesville	3201000	Batesville Junior High	3201004		56.57%	17.68%	25.76%	43.44%
Batesville	3201000	Central Elementary	3201001		60.93%	13.25%	25.83%	39.08%
Batesville	3201000	Eagle Mountain Elementary	3201009	3.77%	63.77%	16.23%	16.23%	32.46%
Batesville	3201000	Sulphur Rock Elementary	3201042		60.00%	19.35%	20.65%	40.00%
Batesville	3201000	West Elementary	3201003	5.00%	62.73%	13.64%	18.64%	32.28%
Bauxite	6301000	Bauxite High	6301002		61.15%	19.11%	19.75%	38.86%
Bauxite	6301000	Pine Haven Elementary	6301001	2.04%	61.52%	19.83%	16.62%	36.45%
Bay	1601000	Bay Elementary	1601001		66.19%	14.39%	19.42%	33.81%
Bay	1601000	Bay High	1601002		65.72%	14.29%	20.00%	34.29%
Bearden	5201000	Bearden Elementary	5201001		47.37%	12.28%	40.35%	52.63%
Bearden	5201000	Bearden High	5201002		41.03%	23.08%	35.90%	58.98%
Bearden	5201000	Bearden Middle	5201005		50.00%	23.61%	26.39%	50.00%
Beebe	7302000	Beebe Elementary	7302008		46.56%	22.99%	30.45%	53.44%
Beebe	7302000	Beebe High	7302010		55.63%	17.22%	27.15%	44.37%
Beebe	7302000	Beebe Intermediate	7302013		67.54%	14.47%	17.98%	32.45%
Beebe	7302000	Beebe Junior High	7302009		62.37%	16.13%	21.51%	37.64%
Beebe	7302000	Beebe Middle	7302011	4.81%	53.37%	21.15%	20.67%	41.82%

District Name	District LEA	School Name	School LEA	Under Weight	Healthy Weight	Over-weight	Obese	Over-weight or Obese
Benton County School of Arts	0440700	Benton County School of Arts	0440701	2.13%	67.23%	15.32%	15.32%	30.64%
Benton	6302000	Angie Grant Elementary	6302007	3.42%	63.70%	13.01%	19.86%	32.87%
Benton	6302000	Benton High	6302012	4.14%	64.14%	16.90%	14.83%	31.73%
Benton	6302000	Benton Junior High	6302010	1.47%	60.18%	15.63%	22.71%	38.34%
Benton	6302000	Benton Middle	6302011	3.19%	55.94%	21.16%	19.71%	40.87%
Benton	6302000	Caldwell Elementary	6302006		67.84%	16.30%	15.86%	32.16%
Benton	6302000	Perrin Elementary	6302008	2.77%	61.94%	17.65%	17.65%	35.30%
Benton	6302000	Ringgold Elementary	6302009		72.00%	10.22%	17.78%	28.00%
Bentonville	0401000	Apple Glen Elementary	0401007	3.50%	68.87%	12.45%	15.18%	27.63%
Bentonville	0401000	Bentonville High	0401003	2.51%	66.03%	14.48%	16.99%	31.47%
Bentonville	0401000	Centerton Gamble Elementary	0401014		71.71%	14.14%	14.14%	28.28%
Bentonville	0401000	Central Park at Morning Star	0401012	1.37%	72.05%	17.81%	8.77%	26.58%
Bentonville	0401000	Cooper Elementary	0401015	4.48%	79.40%	7.76%	8.36%	16.12%
Bentonville	0401000	Elm Tree Elementary	0401009	1.99%	73.58%	13.92%	10.51%	24.43%
Bentonville	0401000	Lincoln Junior High	0401010	3.00%	68.12%	16.35%	12.53%	28.88%
Bentonville	0401000	Mary Mae Jones Elementary	0401011		66.77%	13.79%	19.44%	33.23%
Bentonville	0401000	Old High Middle	0401005	4.33%	67.97%	16.02%	11.69%	27.71%
Bentonville	0401000	R.E. Baker Elementary	0401004		77.59%	13.45%	8.97%	22.42%
Bentonville	0401000	Ruth Barker Middle	0401013	3.60%	68.47%	16.67%	11.26%	27.93%
Bentonville	0401000	Spring Hill Middle	0401008	3.39%	62.37%	18.31%	15.93%	34.24%
Bentonville	0401000	Sugar Creek Elementary	0401006		72.63%	14.60%	12.77%	27.37%
Bentonville	0401000	Thomas Jefferson Elementary	0401001	1.94%	69.38%	18.22%	10.47%	28.69%
Bentonville	0401000	Washington Junior High	0401002	3.23%	76.61%	11.29%	8.87%	20.16%
Bergman	0502000	Bergman Elementary	0502006	4.35%	62.06%	19.37%	14.23%	33.60%
Bergman	0502000	Bergman High	0502007		63.95%	16.28%	19.77%	36.05%
Bergman	0502000	Bergman Middle	0502008	3.61%	54.82%	17.47%	24.10%	41.57%
Berryville	0801000	Berryville Elementary	0801001	3.69%	63.42%	15.77%	17.11%	32.88%
Berryville	0801000	Berryville High	0801002		58.52%	15.56%	25.93%	41.49%
Berryville	0801000	Berryville Intermediate	0801004		61.94%	16.13%	21.94%	38.07%
Berryville	0801000	Berryville Middle	0801003	2.26%	58.27%	16.54%	22.93%	39.47%
Bismarck	3001000	Bismarck Elementary	3001001		67.72%	17.09%	15.19%	32.28%
Bismarck	3001000	Bismarck High	3001003		55.55%	24.07%	20.37%	44.44%
Bismarck	3001000	Bismarck Middle	3001002	3.31%	60.93%	17.88%	17.88%	35.76%
Blevins	2901000	Blevins Elementary	2901001		60.61%	18.18%	21.21%	39.39%
Blevins	2901000	Blevins High	2901002		68.09%	14.89%	17.02%	31.91%
Blevins	2901000	Emmet Elementary	2901013		52.54%	15.25%	32.20%	47.45%
Blevins	2901000	Emmet High	2901014		80.00%		20.00%	20.00%
Blytheville	4702000	Blytheville Charter & ALC	4702703		55.55%	18.52%	25.93%	44.45%
Blytheville	4702000	Blytheville High	4702013	3.47%	54.17%	19.44%	22.92%	42.36%
Blytheville	4702000	Blytheville Intermediate	4702011	2.29%	50.00%	23.85%	23.85%	47.70%
Blytheville	4702000	Blytheville Kindergarten Ctr.	4702007	2.97%	62.71%	15.68%	18.64%	34.32%
Blytheville	4702000	Blytheville Middle	4702012		54.02%	15.18%	30.80%	45.98%
Blytheville	4702000	Blytheville Primary	4702008	2.80%	58.80%	16.40%	22.00%	38.40%
Blytheville	4702000	Central Elementary	4702006		51.14%	20.55%	28.31%	48.86%
Booneville	4201000	Booneville Elementary	4201001	3.24%	63.89%	15.05%	17.82%	32.87%

District Name	District LEA	School Name	School LEA	Under Weight	Healthy Weight	Over-weight	Obese	Over-weight or Obese
Booneville	4201000	Booneville High	4201002		76.19%		23.81%	23.81%
Booneville	4201000	Booneville Junior High	4201003		68.66%	14.93%	16.42%	31.35%
Bradford	7303000	Bradford Elementary	7303014		50.00%	23.81%	26.19%	50.00%
Bradford	7303000	Bradford High	7303015		48.61%	16.67%	34.72%	51.39%
Bradley	3701000	Bradley Elementary	3701001		64.71%	15.69%	19.61%	35.30%
Bradley	3701000	Bradley High	3701002		53.44%	29.31%	17.24%	46.55%
Brinkley	4801000	Brinkley High	4801003		53.08%	18.52%	28.40%	46.92%
Brinkley	4801000	C.B. Partee Elementary	4801001	3.74%	59.36%	14.44%	22.46%	36.90%
Brookland	1603000	Brookland Elementary	1603006		58.12%	19.01%	22.87%	41.88%
Brookland	1603000	Brookland High	1603007		65.48%	14.29%	20.24%	34.53%
Brookland	1603000	Brookland Middle	1603009	2.22%	59.56%	17.33%	20.89%	38.22%
Bryant	6303000	Bethel Middle	6303028	3.47%	62.65%	18.98%	14.90%	33.88%
Bryant	6303000	Bryant Elementary	6303020	2.13%	63.33%	16.42%	18.12%	34.54%
Bryant	6303000	Bryant High	6303022	1.48%	64.41%	14.19%	19.92%	34.11%
Bryant	6303000	Bryant Middle	6303026	2.82%	59.79%	16.75%	20.63%	37.38%
Bryant	6303000	Collegeville Elementary	6303027		75.22%	12.61%	12.16%	24.77%
Bryant	6303000	Hurricane Creek Elementary	6303029	1.75%	65.38%	14.69%	18.18%	32.87%
Bryant	6303000	Robert L. Davis Elementary	6303024		62.95%	17.77%	19.29%	37.06%
Bryant	6303000	Salem Elementary	6303023	2.91%	71.36%	15.05%	10.68%	25.73%
Bryant	6303000	Springhill Elementary	6303025		70.43%	13.44%	16.13%	29.57%
Buffalo Is. Central	1605000	Buffalo Is. Central East Elementary	1605061	5.84%	50.36%	16.06%	27.74%	43.80%
Buffalo Is. Central	1605000	Buffalo Is. Central High	1605063		74.42%	11.63%	13.95%	25.58%
Buffalo Is. Central	1605000	Buffalo Is. Central Junior High	1605062		58.18%	23.64%	18.18%	41.82%
Buffalo Is. Central	1605000	Buffalo Is. Central West Elementary	1605060		62.31%	11.54%	26.15%	37.69%
Cabot	4304000	Academic Center for Excellence	4304703		66.67%		33.34%	33.34%
Cabot	4304000	Cabot High	4304005	2.08%	69.52%	14.55%	13.86%	28.41%
Cabot	4304000	Cabot Junior High North	4304011	3.45%	64.94%	18.39%	13.22%	31.61%
Cabot	4304000	Cabot Junior High South	4304004		60.42%	19.79%	19.79%	39.58%
Cabot	4304000	Cabot Middle North	4304012	1.85%	62.77%	15.69%	19.69%	35.38%
Cabot	4304000	Cabot Middle South	4304010	1.98%	57.76%	17.82%	22.44%	40.26%
Cabot	4304000	Central Elementary	4304002		68.50%	15.50%	16.00%	31.50%
Cabot	4304000	Eastside Elementary	4304001	2.93%	71.01%	13.68%	12.38%	26.06%
Cabot	4304000	Magness Creek Elementary	4304013	1.58%	66.14%	17.72%	14.56%	32.28%
Cabot	4304000	Northside Elementary	4304008	2.83%	64.15%	17.45%	15.57%	33.02%
Cabot	4304000	Southside Elementary	4304007		62.95%	20.72%	16.33%	37.05%
Cabot	4304000	Stagecoach Elementary	4304014	3.67%	67.33%	13.67%	15.33%	29.00%
Cabot	4304000	Ward Central Elementary	4304009	2.23%	66.02%	15.88%	15.88%	31.76%
Cabot	4304000	Westside Elementary	4304006		65.99%	17.81%	16.19%	34.00%
Caddo Hills	4901000	Caddo Hills Elementary	4901001		60.12%	18.99%	20.89%	39.88%
Caddo Hills	4901000	Caddo Hills High	4901003		56.07%	30.30%	13.64%	43.94%
Calico Rock	3301000	Calico Rock Elementary	3301001		62.12%	11.36%	26.52%	37.88%
Calico Rock	3301000	Calico Rock High	3301002		64.00%	14.00%	22.00%	36.00%

District Name	District LEA	School Name	School LEA	Under Weight	Healthy Weight	Over-weight	Obese	Over-weight or Obese
Camden Fairview	5204000	Camden Fairview High	5204023		62.34%	12.34%	25.32%	37.66%
Camden Fairview	5204000	Camden Fairview Intermediate	5204026		53.61%	19.59%	26.80%	46.39%
Camden Fairview	5204000	Camden Fairview Middle	5204028	2.03%	50.17%	22.71%	25.08%	47.79%
Camden Fairview	5204000	Fairview Elementary	5204021		65.10%	22.40%	12.50%	34.90%
Camden Fairview	5204000	Ivory Primary	5204025	3.31%	66.89%	14.57%	15.23%	29.80%
Carlisle	4303000	Carlisle Elementary	4303012		63.89%	17.22%	18.89%	36.11%
Carlisle	4303000	Carlisle High	4303013		50.56%	21.35%	28.09%	49.44%
Cave City	6802000	Cave City Elementary	6802001		57.97%	20.29%	21.74%	42.03%
Cave City	6802000	Cave City High	6802002		66.13%	16.13%	17.74%	33.87%
Cave City	6802000	Cave City Intermediate	6802008		48.08%	22.12%	29.81%	51.93%
Cave City	6802000	Cave City Middle	6802007		51.28%	20.51%	28.21%	48.72%
Cave City	6802000	Evening Shade Elementary	6802005		48.15%	24.07%	27.78%	51.85%
Cedar Ridge	3212000	Cedar Ridge High	3212027		49.02%	23.53%	27.45%	50.98%
Cedar Ridge	3212000	Cord-Charlotte Elementary	3212010		50.00%	24.39%	25.61%	50.00%
Cedar Ridge	3212000	Newark Elementary	3212026		61.24%	16.28%	22.48%	38.76%
Cedarville	1702000	Cedarville Elementary	1702008		70.93%	11.05%	18.02%	29.07%
Cedarville	1702000	Cedarville High	1702009		56.67%	23.33%	20.00%	43.33%
Cedarville	1702000	Cedarville Middle	1702010		75.00%	10.94%	14.06%	25.00%
Centerpoint	5502000	Centerpoint High	5502010	3.02%	61.21%	21.12%	14.66%	35.78%
Centerpoint	5502000	Centerpoint Intermediate	5502008		71.23%	15.07%	13.70%	28.77%
Centerpoint	5502000	Centerpoint Primary	5502006		65.04%	13.29%	21.68%	34.97%
Charleston	2402000	Charleston Elementary	2402006	3.45%	65.90%	13.41%	17.24%	30.65%
Charleston	2402000	Charleston High	2402007		63.46%	17.31%	19.23%	36.54%
Clarendon	4802000	Clarendon Elementary	4802008		58.23%	16.46%	25.32%	41.78%
Clarendon	4802000	Clarendon High	4802010		57.95%	14.77%	27.27%	42.04%
Clarksville	3601000	Clarksville High	3601005		61.29%	16.94%	21.77%	38.71%
Clarksville	3601000	Clarksville Junior High	3601004	2.87%	59.20%	21.26%	16.67%	37.93%
Clarksville	3601000	Kraus Middle	3601002		55.17%	13.79%	31.03%	44.82%
Clarksville	3601000	Pyron Elementary	3601001		60.81%	18.24%	20.95%	39.19%
Cleveland County	1305000	Kingsland Elementary	1305001		54.68%	10.94%	34.38%	45.32%
Cleveland County	1305000	Rison Elementary	1305009		43.82%	18.54%	37.64%	56.18%
Cleveland County	1305000	Rison High	1305010		55.07%	21.74%	23.19%	44.93%
Clinton	7102000	Clinton High	7102006		68.75%	13.75%	17.50%	31.25%
Clinton	7102000	Clinton Intermediate	7102007		64.40%	18.94%	16.67%	35.61%
Clinton	7102000	Clinton Junior High	7102008		60.57%	20.19%	19.23%	39.42%
Clinton	7102000	Cowsert Elementary	7102005		61.26%	21.99%	16.75%	38.74%
Concord	1201000	Concord Elementary	1201001	3.16%	51.90%	18.35%	26.58%	44.93%
Concord	1201000	Concord High	1201002		72.88%	15.25%	11.86%	27.11%
Conway	2301000	Bob Courtway Middle	2301013	2.20%	58.59%	18.06%	21.15%	39.21%
Conway	2301000	Carl Stuart Middle	2301004		64.34%	18.88%	16.78%	35.66%
Conway	2301000	Conway High East	2301005	2.97%	66.73%	15.64%	14.65%	30.29%

District Name	District LEA	School Name	School LEA	Under Weight	Healthy Weight	Over-weight	Obese	Over-weight or Obese
Conway	2301000	Ellen Smith Elementary	2301003	3.00%	63.67%	17.98%	15.36%	33.34%
Conway	2301000	Florence Mattison Elementary	2301009		63.68%	14.35%	21.97%	36.32%
Conway	2301000	Ida Burns Elementary	2301001	2.72%	60.87%	19.02%	17.39%	36.41%
Conway	2301000	Jim Stone Elementary	2301011	3.04%	69.57%	13.04%	14.35%	27.39%
Conway	2301000	Julia Lee Moore Elementary	2301008		70.79%	13.48%	15.73%	29.21%
Conway	2301000	Marguerite Vann Elementary	2301010		66.53%	15.29%	18.18%	33.47%
Conway	2301000	Ray-Phyllis Simon Intermediate	2301017	3.02%	49.43%	20.75%	26.79%	47.54%
Conway	2301000	Ruth Doyle Intermediate	2301016	1.96%	58.82%	19.61%	19.61%	39.22%
Conway	2301000	Sallie Cone Elementary	2301002		53.10%	25.42%	21.47%	46.89%
Conway	2301000	Theodore Jones Elementary	2301012	4.59%	72.48%	9.63%	13.30%	22.93%
Conway	2301000	Woodrow Cummins Elementary	2301018	4.95%	72.77%	9.41%	12.87%	22.28%
Corning	1101000	Central Elementary	1101005		55.69%	13.77%	30.54%	44.31%
Corning	1101000	Corning High	1101004		46.46%	21.94%	31.61%	53.55%
Corning	1101000	Park Elementary	1101006		65.34%	13.07%	21.59%	34.66%
Cotter	0302000	Amanda Gist Elementary	0302006	3.31%	51.93%	18.78%	25.97%	44.75%
Cotter	0302000	Cotter High	0302007		60.64%	12.77%	26.60%	39.37%
County Line	2403000	County Line Elementary	2403011		61.20%	18.66%	20.15%	38.81%
County Line	2403000	County Line High	2403012		61.54%	14.10%	24.36%	38.46%
Covenantkeepers Charter	6044700	Covenant Keepers Charter	6044702		67.06%	14.12%	18.82%	32.94%
Cross County	1901000	Cross County High	1901004		57.43%	16.83%	25.74%	42.57%
Cross County	1901000	Cross County Intermediate	1901005		50.00%	15.56%	34.44%	50.00%
Cross County	1901000	Cross County Primary	1901003		44.26%	27.87%	27.87%	55.74%
Crossett	0201000	Crossett Elementary	0201001	2.27%	57.43%	17.63%	22.67%	40.30%
Crossett	0201000	Crossett High	0201006		66.99%	10.68%	22.33%	33.01%
Crossett	0201000	Crossett Middle	0201008	3.08%	56.92%	15.00%	25.00%	40.00%
Cushman	3203000	Cushman Elementary	3203014		60.00%	20.00%	20.00%	40.00%
Cushman	3203000	Cushman High	3203015		55.26%	28.95%	15.79%	44.74%
Cutter-Morning Star	2601000	Cutter-Morning Star Elementary	2601001		66.19%	15.83%	17.99%	33.82%
Cutter-Morning Star	2601000	Cutter-Morning Star High	2601002		60.78%	16.67%	22.55%	39.22%
Danville	7503000	Danville High	7503006		50.00%	23.08%	26.92%	50.00%
Danville	7503000	Danville Middle	7503007		60.98%	19.51%	19.51%	39.02%
Danville	7503000	S.C. Tucker Elementary	7503005		47.45%	20.92%	31.63%	52.55%
Dardanelle	7504000	Dardanelle Elementary	7504009		55.43%	22.09%	22.49%	44.58%
Dardanelle	7504000	Dardanelle High	7504011	4.00%	53.60%	15.20%	27.20%	42.40%
Dardanelle	7504000	Dardanelle Middle	7504010		52.52%	19.42%	28.06%	47.48%
Dardanelle	7504000	Dardanelle Primary	7504013	3.16%	62.11%	15.44%	19.30%	34.74%
Decatur	0402000	Decatur Elementary	0402008		67.48%	17.07%	15.45%	32.52%
Decatur	0402000	Decatur High	0402009		58.93%	17.86%	23.21%	41.07%
Decatur	0402000	Decatur Middle	0402010		57.14%	20.00%	22.86%	42.86%
Deer-Mt. Judea	5106000	Deer Elementary	5106001		77.36%	13.21%	9.43%	22.64%
Deer-Mt. Judea	5106000	Deer High	5106002		67.86%	32.15%		32.15%
Deer-Mt. Judea	5106000	Mount Judea Elementary	5106009		38.24%	38.24%	23.53%	61.77%
Deer-Mt. Judea	5106000	Mount Judea High	5106010		46.67%	53.33%		53.33%
Delight	5501000	Delight Elementary	5501001		60.00%	18.75%	21.25%	40.00%

District Name	District LEA	School Name	School LEA	Under Weight	Healthy Weight	Over-weight	Obese	Over-weight or Obese
Delight	5501000	Delight Elementary	5501001		60.00%	18.75%	21.25%	40.00%
Delight	5501000	Delight High	5501002		61.70%	12.77%	25.53%	38.30%
Dequeen	6701000	Dequeen Elementary	6701001		50.32%	20.75%	28.93%	49.68%
Dequeen	6701000	Dequeen High	6701003		50.00%	19.72%	30.28%	50.00%
Dequeen	6701000	Dequeen Middle	6701004		55.76%	20.50%	23.74%	44.24%
Dequeen	6701000	Dequeen Primary	6701002	1.49%	53.98%	17.66%	26.87%	44.53%
Dequeen	6701000	Lockesburg Elementary	6701016		67.01%	8.25%	24.74%	32.99%
Dequeen	6701000	Lockesburg High	6701017		64.71%		35.29%	35.29%
Dermott	0901000	Dermott Elementary	0901001		55.80%	13.04%	31.16%	44.20%
Dermott	0901000	Dermott High	0901003		62.86%	27.14%	10.00%	37.14%
Des Arc	5901000	Des Arc Elementary	5901001		56.29%	19.76%	23.95%	43.71%
Des Arc	5901000	Des Arc High	5901002		56.34%	21.13%	22.54%	43.67%
Dewitt	0101000	Dewitt Elementary	0101001	2.03%	59.76%	14.63%	23.58%	38.21%
Dewitt	0101000	Dewitt High	0101004		60.67%	13.48%	25.84%	39.32%
Dewitt	0101000	Dewitt Middle	0101003		52.66%	18.62%	28.72%	47.34%
Dewitt	0101000	Gillett Elementary	0101008		59.46%	16.22%	24.32%	40.54%
Dewitt	0101000	Gillett High	0101009		75.00%		25.00%	25.00%
Dewitt	0101000	Humphrey Elementary	0101017		46.15%	26.92%	26.92%	53.84%
Dierks	3102000	Dierks High	3102002		61.82%	21.82%	16.36%	38.18%
Dierks	3102000	Joann Walters Elementary	3102001		51.13%	26.32%	22.56%	48.88%
Dollarway	3502000	Alzheimer-Martin Elementary	3502005		51.43%	20.00%	28.57%	48.57%
Dollarway	3502000	Dollarway High	3502010		55.84%	18.33%	25.83%	44.16%
Dollarway	3502000	Dollarway Middle	3502009		54.18%	19.82%	25.99%	45.81%
Dollarway	3502000	Matthews Elementary	3502006		62.24%	21.43%	16.33%	37.76%
Dollarway	3502000	Townsend Park North Elementary	3502007		55.35%	21.43%	23.21%	44.64%
Dollarway	3502000	Townsend Park South Elementary	3502008		60.87%	13.04%	26.09%	39.13%
Dover	5802000	Dover High	5802006		59.02%	19.67%	21.31%	40.98%
Dover	5802000	Dover Intermediate	5802007	4.63%	62.96%	13.89%	18.52%	32.41%
Dover	5802000	Dover Middle	5802008	3.17%	52.38%	19.05%	25.40%	44.45%
Dover	5802000	Dover Primary	5802005		65.29%	16.58%	18.13%	34.71%
Dreamland Academy	6042700	Dreamland Academy	6042701		65.58%	11.48%	22.95%	34.43%
Drew Central	2202000	Drew Central Elementary	2202004		67.23%	12.99%	19.77%	32.76%
Drew Central	2202000	Drew Central High	2202005		51.77%	19.15%	29.08%	48.23%
Drew Central	2202000	Drew Central Middle	2202007		61.54%	17.31%	21.15%	38.46%
Dumas	2104000	Central Elementary	2104017		68.50%	13.39%	18.11%	31.50%
Dumas	2104000	Dumas High	2104021		55.00%	14.00%	31.00%	45.00%
Dumas	2104000	Dumas Junior High	2104020		56.66%	20.00%	23.33%	43.33%
Dumas	2104000	Reed Elementary	2104024		53.18%	20.23	26.59%	46.82%
Earle	1802000	Dunbar Middle	1802006		64.77%	15.91%	19.32%	35.23%
Earle	1802000	Earle Elementary	1802005		66.04%	18.87%	15.09%	33.96%
Earle	1802000	Earle High	1802007		52.94%	11.76%	35.29%	47.05%
East End	5301000	Anne Watson Elementary	5301001		53.34%	21.33%	25.33%	46.66%
East End	5301000	Bigelow High	5301002		60.81%	17.57%	21.62%	39.19%
East Poinsett County	5608000	East Poinsett County High	5608037		52.03%	18.70%	29.27%	47.97%
East Poinsett County	5608000	Lepanto Elementary	5608034		59.09%	18.18%	22.73%	40.91%
East Poinsett County	5608000	Tyronza Elementary	5608035		59.82%	17.95%	22.22%	40.17%
El Dorado	7001000	Barton Junior High	7001010	2.16%	51.08%	19.06%	27.70%	46.76%
El Dorado	7001000	El Dorado High	7001012		54.11%	15.69%	30.20%	45.89%

District Name	District LEA	School Name	School LEA	Under Weight	Healthy Weight	Over-weight	Obese	Over-weight or Obese
El Dorado	7001000	Hugh Goodwin Elementary	7001001		62.56%	15.27%	22.17%	37.44%
El Dorado	7001000	Northwest Elementary	7001004		57.75%	15.49%	26.76%	42.25%
El Dorado	7001000	Retta Brown Elementary	7001005		54.99%	20.62%	24.38%	45.00%
El Dorado	7001000	Union Elementary	7001056		53.01%	24.10%	22.89%	46.99%
El Dorado	7001000	Washington Middle	7001011		56.25%	15.62%	28.12%	43.74%
El Dorado	7001000	Yocum Elementary	7001009		65.19%	14.64%	20.17%	34.81%
Elkins	7201000	Elkins Elementary Primary	7201004		71.22%	18.71%	10.07%	28.78%
Elkins	7201000	Elkins Elementary	7201001		57.47%	23.88%	18.66%	42.54%
Elkins	7201000	Elkins High	7201002		63.49%	15.87%	20.63%	36.50%
Elkins	7201000	Elkins Middle	7201003		61.64%	23.29%	15.07%	38.36%
Emerson-Taylor	1408000	Emerson Elementary	1408001		61.96%	10.87%	27.17%	38.04%
Emerson-Taylor	1408000	Emerson High	1408002		80.43%		19.57%	19.57%
Emerson-Taylor	1408000	Taylor Elementary	1408018		66.28%	19.77%	13.95%	33.72%
Emerson-Taylor	1408000	Taylor High	1408019		55.81%	18.60%	25.58%	44.18%
England	4302000	England Elementary	4302017	2.31%	48.08%	15.77%	33.85%	49.62%
England	4302000	England High	4302018		57.98%	15.13%	26.89%	42.02%
Estem Elementary Public Charter	6045700	Estem Elementary Charter	6045701	2.76%	59.45%	17.97%	19.82%	37.79%
Estem Middle Public Charter	6046700	Estem Middle Charter	6046702	3.72%	55.32%	18.62%	22.34%	40.96%
Eureka Springs	0802000	Eureka Springs Elementary	0802006		69.09%	12.73%	18.18%	30.91%
Eureka Springs	0802000	Eureka Springs High	0802007		68.75%		31.25%	31.25%
Farmington	7202000	Bob Folsom Elementary	7202009		69.10%	17.89%	13.01%	30.90%
Farmington	7202000	Farmington High	7202006		72.07%	13.51%	14.41%	27.92%
Farmington	7202000	George R. Ledbetter Intermediate	7202005		61.69%	20.78%	17.53%	38.31%
Farmington	7202000	Jerry "Pop" Williams Elementary	7202008		74.86%	15.08%	10.06%	25.14%
Farmington	7202000	Randall G. Lynch Middle	7202007	3.24%	62.78%	16.50%	17.48%	33.98%
Fayetteville	7203000	Asbell Elementary	7203010		63.58%	19.65%	16.76%	36.41%
Fayetteville	7203000	Butterfield Elementary	7203012	2.84%	72.51%	13.74%	10.90%	24.64%
Fayetteville	7203000	Fayetteville High East	7203020		77.16%	15.75%	7.09%	22.84%
Fayetteville	7203000	Happy Hollow Elementary	7203013		70.06%	16.95%	12.99%	29.94%
Fayetteville	7203000	Holcomb Elementary	7203022		65.32%	18.25%	16.42%	34.67%
Fayetteville	7203000	Holt Middle	7203025	3.11%	59.01%	19.25%	18.63%	37.88%
Fayetteville	7203000	Leverett Elementary	7203015	6.94%	72.22%	11.11%	9.72%	20.83%
Fayetteville	7203000	Mcnaair Middle	7203024	2.76%	72.76%	14.83%	9.66%	24.49%
Fayetteville	7203000	Owl Creek	7203027	2.04%	61.90%	16.67%	19.39%	36.06%
Fayetteville	7203000	Ramay Junior High	7203018		65.30%	16.89%	17.81%	34.70%
Fayetteville	7203000	Root Elementary	7203016		69.60%	15.86%	14.54%	30.40%
Fayetteville	7203000	Vandergriff Elementary	7203023	6.67%	75.79%	10.53%	7.02%	17.55%
Fayetteville	7203000	Washington Elementary	7203017		72.73%	12.34%	14.94%	27.28%
Fayetteville	7203000	Woodland Junior High	7203019	1.60%	73.80%	17.25%	7.35%	24.60%
Flippin	4501000	Flippin Elementary	4501001	2.78%	67.78%	15.56%	13.89%	29.45%
Flippin	4501000	Flippin High	4501002		58.93%	21.43%	19.64%	41.07%
Flippin	4501000	Flippin Middle	4501003		58.09%	18.38%	23.53%	41.91%
Fordyce	2002000	Fordyce Elementary	2002008		61.28%	16.17%	22.55%	38.72%
Fordyce	2002000	Fordyce High	2002007		48.72%	24.36%	26.92%	51.28%

District Name	District LEA	School Name	School LEA	Under Weight	Healthy Weight	Over-weight	Obese	Over-weight or Obese
Fordyce	2002000	Fordyce Middle	2002009		51.11%	21.48%	27.41%	48.89%
Foreman	4102000	Foreman High	4102010		64.52%	16.13%	19.35%	35.48%
Foreman	4102000	Oscar Hamilton Elementary	4102008		61.87%	13.56%	24.58%	38.14%
Forrest City	6201000	Central Elementary	6201003	1.68%	62.50%	17.79%	18.03%	35.82%
Forrest City	6201000	Forrest City High	6201011		57.22%	21.97%	20.81%	42.78%
Forrest City	6201000	Forrest City Junior High	6201010		57.90%	17.11%	25.00%	42.11%
Forrest City	6201000	Lincoln Middle	6201012		55.37%	19.01%	25.62%	44.63%
Forrest City	6201000	Stewart Elementary	6201014	2.66%	57.49%	20.53%	19.32%	39.85%
Fort Smith	6601000	Albert Pike Elementary	6601014	3.24%	58.92%	15.68%	22.16%	37.84%
Fort Smith	6601000	Ballman Elementary	6601001		65.38%	18.59%	16.03%	34.62%
Fort Smith	6601000	Barling Elementary	6601002		66.46%	16.77%	16.77%	33.54%
Fort Smith	6601000	Beard Elementary	6601003		71.17%	15.32%	13.51%	28.83%
Fort Smith	6601000	Belle Point Alternative Center	6601005		73.08%	26.93%		26.93%
Fort Smith	6601000	Bonneville Elementary	6601006	3.92%	64.71%	15.03%	16.34%	31.37%
Fort Smith	6601000	Carnall Elementary	6601007		64.89%	10.64%	24.47%	35.11%
Fort Smith	6601000	Cavanaugh Elementary	6601008		78.75%	15.00%	6.25%	21.25%
Fort Smith	6601000	Dora Kimmons Junior High	6601022		55.92%	16.59%	27.49%	44.08%
Fort Smith	6601000	Elmer H. Cook Elementary	6601031	2.11%	70.42%	16.20%	11.27%	27.47%
Fort Smith	6601000	Euper Lane Elementary	6601033		63.26%	17.86%	18.88%	36.74%
Fort Smith	6601000	Fairview Elementary	6601010		62.55%	18.73%	18.73%	37.46%
Fort Smith	6601000	Harry C. Morrison Elementary	6601030		59.04%	17.14%	23.81%	40.95%
Fort Smith	6601000	Howard Elementary	6601011		55.00%	13.89%	31.11%	45.00%
Fort Smith	6601000	John P. Woods Elementary	6601029	3.72%	72.56%	13.49%	10.23%	23.72%
Fort Smith	6601000	L. A. Chaffin Junior High	6601020		64.76%	16.19%	19.05%	35.24%
Fort Smith	6601000	Northside High	6601024		66.28%	15.71%	18.01%	33.72%
Fort Smith	6601000	Ramsey Junior High	6601023	4.66%	61.44%	14.41%	19.49%	33.90%
Fort Smith	6601000	Raymond E. Orr Elementary	6601012		69.00%	13.45%	17.54%	30.99%
Fort Smith	6601000	Southside High	6601025	3.00%	66.21%	14.99%	15.80%	30.79%
Fort Smith	6601000	Spradling Elementary	6601016	2.91%	57.28%	19.42%	20.39%	39.81%
Fort Smith	6601000	Sunnymede Elementary	6601017		59.93%	18.05%	22.02%	40.07%
Fort Smith	6601000	Sutton Elementary	6601018	2.07%	55.60%	19.50%	22.82%	42.32%
Fort Smith	6601000	Tilles Elementary	6601032		52.36%	21.70%	25.94%	47.64%
Fort Smith	6601000	Trusty Elementary	6601019	3.21%	58.33%	17.95%	20.51%	38.46%
Fort Smith	6601000	William O. Darby Junior High	6601021		47.76%	26.12%	26.12%	52.24%
Fouke	4603000	Fouke Elementary	4603009		63.22%	17.49%	19.28%	36.77%
Fouke	4603000	Fouke High	4603010		61.19%	19.40%	19.40%	38.80%
Fouke	4603000	Fouke Middle	4603011		61.25%	20.00%	18.75%	38.75%
Fountain Lake	2602000	Fountain Lake Elementary	2602005	1.65%	70.96%	16.17%	11.22%	27.39%
Fountain Lake	2602000	Fountain Lake High	2602006		60.78%	17.65%	21.57%	39.22%
Genoa Central	4602000	Gary E. Cobb Middle	4602007		51.20%	28.00%	20.80%	48.80%
Genoa Central	4602000	Genoa Central Elementary	4602005		68.09%	17.62%	14.29%	31.91%
Genoa Central	4602000	Genoa Central High	4602006		74.00%	12.00%	14.00%	26.00%
Gentry	0403000	Gentry High	0403014		71.18%	11.86%	16.95%	28.81%
Gentry	0403000	Gentry Intermediate	0403013		63.16%	22.11%	14.74%	36.85%
Gentry	0403000	Gentry Middle	0403015		54.64%	25.14%	20.22%	45.36%
Gentry	0403000	Gentry Primary	0403016		67.34%	18.59%	14.07%	32.66%

District Name	District LEA	School Name	School LEA	Under Weight	Healthy Weight	Over-weight	Obese	Over-weight or Obese
Gentry	0403000	Gentry Primary	0403016		67.34%	18.59%	14.07%	32.66%
Glen Rose	3002000	Glen Rose Elementary	3002007		70.68%	12.78%	16.54%	29.32%
Glen Rose	3002000	Glen Rose High	3002009		65.57%	11.48%	22.95%	34.43%
Glen Rose	3002000	Glen Rose Middle	3002010	5.77%	65.38%	10.58%	18.27%	28.85%
Gosnell	4708000	Gosnell Elementary	4708028	3.99%	65.34%	16.21%	14.46%	30.67%
Gosnell	4708000	Gosnell High	4708031		59.76%	15.98%	24.26%	40.24%
Gravette	0404000	Glenn Duffy Elementary	0404023		79.46%	12.97%	7.57%	20.54%
Gravette	0404000	Gravette High	0404022		69.00%	21.00%	10.00%	31.00%
Gravette	0404000	Gravette Middle	0404024	5.81%	72.09%	5.81%	16.28%	22.09%
Gravette	0404000	Gravette Upper Elementary	0404025		72.37%	13.16%	14.47%	27.63%
Green Forest	0803000	Green Forest Elementary	0803011		61.80%	16.29%	21.91%	38.20%
Green Forest	0803000	Green Forest High	0803012		50.00%	18.24%	31.76%	50.00%
Green Forest	0803000	Green Forest Intermediate	0803013		45.55%	24.61%	29.84%	54.45%
Greenbrier	2303000	Greenbrier Eastside Elementary	2303016		68.68%	13.21%	18.11%	31.32%
Greenbrier	2303000	Greenbrier High	2303017		68.00%	14.00%	18.00%	32.00%
Greenbrier	2303000	Greenbrier Junior High	2303020		65.05%	13.44%	21.51%	34.95%
Greenbrier	2303000	Greenbrier Middle	2303018	3.52%	59.80%	17.59%	19.10%	36.69%
Greenbrier	2303000	Greenbrier Westside Elementary	2303019	2.53%	72.73%	14.65%	10.10%	24.75%
Greenbrier	2303000	Wooster Elementary	2303021		66.27%	21.30%	12.43%	33.73%
Greene County Tech.	2807000	Green County Tech Junior High	2807009		58.56%	22.65%	18.78%	41.43%
Greene County Tech.	2807000	Greene County Tech. High	2807008		64.92%	14.66%	20.42%	35.08%
Greene County Tech.	2807000	Greene County Tech. Intermediate	2807007	2.18%	52.84%	19.21%	25.76%	44.97%
Greene County Tech.	2807000	Greene County Tech. Primary	2807010		62.06%	18.38%	19.57%	37.95%
Greene County Tech.	2807000	Greene County Tech Elementary	2807004		53.30%	18.27%	28.43%	46.70%
Greenland	7204000	Greenland Elementary	7204027		66.67%	16.67%	16.67%	33.34%
Greenland	7204000	Greenland High	7204028		65.12%	16.28%	18.60%	34.88%
Greenland	7204000	Greenland Middle	7204029		63.42%	19.51%	17.07%	36.58%
Greenwood	6602000	East Hills Middle	6602045	2.25%	62.17%	15.73%	19.85%	35.58%
Greenwood	6602000	North Main Intermediate	6602041	3.51%	63.16%	16.23%	17.11%	33.34%
Greenwood	6602000	Raymond E. Wells Junior High	6602042		63.08%	15.77%	21.15%	36.92%
Greenwood	6602000	Westwood Primary	6602044	1.80%	70.74%	16.03%	11.42%	27.45%
Gurdon	1003000	Cabe Middle	1003017		55.05%	20.18%	24.77%	44.95%
Gurdon	1003000	Gurdon High	1003018		61.22%	10.20%	28.57%	38.77%
Gurdon	1003000	Gurdon Primary	1003016		56.12%	16.55%	27.34%	43.89%
Guy-Perkins	2304000	Guy-Perkins Elementary	2304021		58.34%	17.42%	24.24%	41.66%
Guy-Perkins	2304000	Guy-Perkins High	2304022		35.48%	38.71%	25.81%	64.52%
Hackett	6603000	Hackett Elementary	6603047		51.65%	23.18%	25.17%	48.35%
Hackett	6603000	Hackett High	6603048		57.30%	22.47%	20.22%	42.69%
Hamburg	0203000	Allbritton Upper Elementary	0203016		55.88%	19.12%	25.00%	44.12%
Hamburg	0203000	Hamburg High	0203018		52.94%	24.71%	22.35%	47.06%
Hamburg	0203000	Hamburg Junior High	0203017		53.10%	19.47%	27.43%	46.90%
Hamburg	0203000	Noble Lower Elementary	0203028		68.86%	13.60%	17.54%	31.14%
Hamburg	0203000	Portland Elementary	0203027		56.16%	19.18%	24.66%	43.84%
Hamburg	0203000	Wilmot Elementary	0203019		58.00%	20.00%	22.00%	42.00%

District Name	District LEA	School Name	School LEA	Under Weight	Healthy Weight	Over-weight	Obese	Over-weight or Obese
Hampton	0701000	Hampton Elementary	0701001		51.77%	20.57%	27.66%	48.23%
Hampton	0701000	Hampton High	0701002		61.47%	13.76%	24.77%	38.53%
Harmony Grove	5205000	Harmony Grove Elementary	5205028		58.49%	16.51%	25.00%	41.51%
Harmony Grove	5205000	Harmony Grove High	5205029		56.25%	14.58%	29.17%	43.75%
Harmony Grove	6304000	Harmony Grove High	6304030		54.10%	19.67%	26.23%	45.90%
Harmony Grove	6304000	Harmony Grove Middle	6304031		54.10%	20.49%	25.41%	45.90%
Harmony Grove	5205000	Sparkman Elementary	5205011		56.95%	19.44%	23.61%	43.05%
Harmony Grove	6304000	Westbrook Elementary	6304029		71.87%	12.50%	15.62%	28.12%
Harrisburg	5602000	Harrisburg Elementary	5602005		53.63%	18.15%	28.23%	46.38%
Harrisburg	5602000	Harrisburg High	5602007		54.16%	10.42%	35.42%	45.84%
Harrisburg	5602000	Harrisburg Middle	5602008		53.15%	22.38%	24.48%	46.86%
Harrison	0503000	Eagle Heights Elementary	0503011		60.95%	20.95%	18.10%	39.05%
Harrison	0503000	Forest Heights Elementary	0503012	3.05%	63.96%	16.75%	16.24%	32.99%
Harrison	0503000	Harrison High	0503016		58.24%	17.03%	24.73%	41.76%
Harrison	0503000	Harrison Junior High	0503015	3.14%	57.85%	19.73%	19.28%	39.01%
Harrison	0503000	Harrison Middle	0503018		61.18%	19.41%	19.41%	38.82%
Harrison	0503000	Skyline Heights Elementary	0503013		67.69%	15.72%	16.59%	32.31%
Harrison	0503000	Woodland Heights Elementary	0503014		68.57%	8.57%	22.86%	31.43%
Hartford	6604000	Hartford Elementary	6604051	7.14%	69.39%	7.14%	16.33%	23.47%
Hartford	6604000	Hartford High	6604052		65.30%	16.33%	18.37%	34.70%
Hazen	5903000	Hazen Elementary	5903011		59.17%	15.60%	25.23%	40.83%
Hazen	5903000	Hazen High	5903012		70.00%	30.00%		30.00%
Heber Springs	1202000	Heber Springs Elementary	1202005	1.93%	70.10%	13.50%	14.47%	27.97%
Heber Springs	1202000	Heber Springs High	1202006		69.62%	11.39%	18.99%	30.38%
Heber Springs	1202000	Heber Springs Middle	1202007	2.51%	60.80%	18.09%	18.59%	36.68%
Hector	5803000	Hector Elementary	5803009		58.38%	16.77%	24.84%	41.61%
Hector	5803000	Hector High	5803010		62.16%	13.51%	24.32%	37.83%
Helena-W. Helena	5403000	Beech Crest Elementary	5403011		52.98%	20.24%	26.79%	47.03%
Helena-W. Helena	5403000	Central High	5403019		56.87%	13.75%	29.38%	43.13%
Helena-W. Helena	5403000	J.F. Wahl Elementary	5403015		49.23%	14.87%	35.90%	50.77%
Helena-W. Helena	5403000	Miller Junior High	5403018		52.83%	20.75%	26.42%	47.17%
Helena-W. Helena	5403000	West Side Elementary	5403016		47.77%	15.92%	36.31%	52.23%
Helena-W. Helena	5403000	Woodruff Elementary	5403017		63.05%	15.22%	21.74%	36.96%
Hermitage	0601000	Hermitage Elementary	0601006		48.53%	20.59%	30.88%	51.47%
Hermitage	0601000	Hermitage High	0601007		46.15%	53.85%		53.85%
Hermitage	0601000	Hermitage Middle	0601008		50.98%	17.65%	31.37%	49.02%
Highland	6804000	Cherokee Elementary	6804009	6.73%	69.55%	11.22%	12.50%	23.72%
Highland	6804000	Highland High	6804010		58.21%	13.93%	27.86%	41.79%
Highland	6804000	Highland Middle	6804011		59.83%	18.75%	21.43%	40.18%
Hillcrest	3809000	Hillcrest Elementary	3809014		54.07%	21.48%	24.44%	45.92%
Hillcrest	3809000	Hillcrest High	3809023		52.31%	15.38%	32.31%	47.69%

District Name	District LEA	School Name	School LEA	Under Weight	Healthy Weight	Over-weight	Obese	Over-weight or Obese
Hope Academy	3540700	Hope Academy	3540702		35.71%	21.43%	42.86%	64.29%
Hope	2903000	Beryl Henry Upper Elementary	2903008		53.41%	13.07%	33.52%	46.59%
Hope	2903000	Hope High	2903012	5.48%	53.42%	15.75%	25.34%	41.09%
Hope	2903000	Wm. Jefferson Clinton Primary	2903007	1.68%	57.48%	17.31%	23.53%	40.84%
Hope	2903000	Yerger Junior High	2903011		59.43%	14.86%	25.71%	40.57%
Horatio	6703000	Horatio Elementary	6703012		53.39%	18.55%	28.05%	46.60%
Horatio	6703000	Horatio High	6703013		58.18%	20.91%	20.91%	41.82%
Horatio	6703000	Winthrop Elementary	6703014		60.47%	23.26%	16.28%	39.54%
Hot Springs	2603000	Gardner Magnet	2603011		60.88%	17.01%	22.11%	39.12%
Hot Springs	2603000	Hot Springs High	2603021		58.26%	19.13%	22.61%	41.74%
Hot Springs	2603000	Hot Springs Middle	2603020	1.60%	55.32%	17.02%	26.06%	43.08%
Hot Springs	2603000	Langston Magnet	2603023		52.83%	24.53%	22.64%	47.17%
Hot Springs	2603000	Oaklawn Magnet	2603015	2.87%	62.18%	15.76%	19.20%	34.96%
Hot Springs	2603000	Park Magnet	2603016		64.10%	19.66%	16.24%	35.90%
Hot Springs	2603000	Summit	2603013		52.94%	47.06%		47.06%
Hoxie	3804000	Hoxie Elementary	3804009		56.61%	16.98%	26.42%	43.40%
Hoxie	3804000	Hoxie High	3804010		49.25%	21.21%	29.55%	50.76%
Hughes	6202000	Hughes High	6202024		61.64%	19.18%	19.18%	38.36%
Hughes	6202000	Mildred Jackson Elementary.	6202022		61.39%	17.82%	20.79%	38.61%
Huntsville	4401000	Huntsville High	4401003		67.74%	11.83%	20.43%	32.26%
Huntsville	4401000	Huntsville Intermediate	4401004		66.99%	21.36%	11.65%	33.01%
Huntsville	4401000	Huntsville Middle	4401002		69.16%	16.42%	14.43%	30.85%
Huntsville	4401000	St. Paul Elementary	4401011		71.43%	10.20%	18.37%	28.57%
Huntsville	4401000	St. Paul High	4401012		67.74%	32.26%		32.26%
Huntsville	4401000	Watson Primary	4401001	4.67%	64.95%	12.62%	17.76%	30.38%
Imboden Charter	3840700	Imboden Area Charter	3840701		61.76%	23.53%	14.71%	38.24%
Izard County Consolidated	3306000	Izard Co. Cons. Elementary	3306014		63.87%	13.45%	22.69%	36.14%
Izard County Consolidated	3306000	Izard Co. Cons. High	3306015		38.71%	19.35%	41.94%	61.29
Izard County Consolidated	3306000	Izard Co. Cons. Middle	3306016		53.75%	16.25%	30.00%	46.25%
Jackson County	3405000	Swifton Middle	3405019		62.22%	20.00%	17.78%	37.78%
Jackson County	3405000	Tuckerman Elementary	3405024		62.32%	17.39%	20.29%	37.68%
Jackson County	3405000	Tuckerman High	3405025		59.18%	17.35%	23.47%	40.82%
Jasper	5102000	Jasper Elementary	5102005		67.57%	16.89%	15.54%	32.43%
Jasper	5102000	Jasper High	5102006		60.98%	13.41%	25.61%	39.02%
Jasper	5102000	Kingston Elementary	5102007		65.79%	11.84%	22.37%	34.21%
Jasper	5102000	Kingston High	5102008		48.00%	24.00%	28.00%	52.00%
Jessieville	2604000	Jessieville Elementary	2604029	4.60%	66.09%	14.37%	14.94%	29.31%
Jessieville	2604000	Jessieville High	2604030		71.43%	14.29%	14.29%	28.58%
Jessieville	2604000	Jessieville Middle	2604031	6.93%	69.31%	12.87%	10.89%	23.76%
Jonesboro	1608000	Annie Camp Junior High	1608023		60.00%	22.35%	17.65%	40.00%
Jonesboro	1608000	Douglas Macarthur Junior High	1608024		50.00%	21.83%	28.17%	50.00%
Jonesboro	1608000	Health-Wellness Environ. Magnet	1608020		59.33%	15.79%	24.88%	40.67%
Jonesboro	1608000	International Studies Magnet	1608021		66.86%	14.29%	18.86%	33.15%
Jonesboro	1608000	Jonesboro High	1608025		55.55%	20.00%	24.44%	44.44%
Jonesboro	1608000	Kindergarten Center	1608026		64.90%	18.94%	16.16%	35.10%
Jonesboro	1608000	Math & Science Magnet	1608017		59.17%	13.30%	27.52%	40.82%
Jonesboro	1608000	Microsociety Magnet	1608022		59.81%	14.16%	26.03%	40.19%
Jonesboro	1608000	Visual & Performing Arts Magnet	1608019		55.77%	22.12%	22.12%	44.24%

District Name	District LEA	School Name	School LEA	Under Weight	Healthy Weight	Over-weight	Obese	Over-weight or Obese
Junction City	7003000	Junction City Elementary	7003027		62.06%	16.09%	21.84%	37.93%
Junction City	7003000	Junction City High	7003028		55.35%	22.32%	22.32%	44.64%
Kipp-Delta College Prep.	5440700	Kipp-Delta College Prep. High	5440703		62.86%	37.14%		37.14%
Kipp-Delta College Prep.	5440700	Kipp-Delta College Prep.	5440702		43.01%	22.58%	34.41%	56.99%
Kirby	5503000	Kirby Elementary	5503010		69.00%	12.40%	18.60%	31.00%
Kirby	5503000	Kirby High	5503011		64.15%	16.98%	18.87%	35.85%
Lafayette County	3704000	Lafayette County Elementary	3704007	2.44%	54.63%	18.54%	24.39%	42.93%
Lafayette County	3704000	Lafayette County High	3704013		62.13%	18.45%	19.42%	37.87%
Lake Hamilton	2605000	Lake Hamilton Elementary	2605033		65.49%	18.82%	15.69%	34.51%
Lake Hamilton	2605000	Lake Hamilton High	2605034		73.05%	14.89%	12.06%	26.95%
Lake Hamilton	2605000	Lake Hamilton Intermediate	2605036	2.34%	60.55%	19.14%	17.97%	37.11%
Lake Hamilton	2605000	Lake Hamilton Junior High	2605035		60.71%	19.44%	19.84%	39.28%
Lake Hamilton	2605000	Lake Hamilton Middle	2605037		55.79%	22.11%	22.11%	44.22%
Lake Hamilton	2605000	Lake Hamilton Primary	2605038	2.83%	59.51%	14.98%	22.67%	37.65%
Lakeside	0903000	Eudora Elementary	0903007		55.17%	22.41%	22.41%	44.82%
Lakeside	2606000	Lakeside High	2606041		69.00%	17.50%	13.50%	31.00%
Lakeside	0903000	Lakeside High	0903018		57.96%	17.05%	25.00%	42.05%
Lakeside	2606000	Lakeside Intermediate	2606042	6.78%	64.57%	12.56%	16.08%	28.64%
Lakeside	2606000	Lakeside Junior High	2606040	2.74%	68.04%	13.24%	15.98%	29.22%
Lakeside	0903000	Lakeside Lower Elementary	0903015		62.50%	15.00%	22.50%	37.50%
Lakeside	2606000	Lakeside Middle	2606043		64.47%	17.98%	17.54%	35.52%
Lakeside	0903000	Lakeside Middle	0903017		57.81%	12.50%	29.69%	42.19%
Lakeside	2606000	Lakeside Primary	2606039	4.62%	69.33%	15.13%	10.92%	26.05%
Lakeside	0903000	Lakeside Upper Elementary	0903016		44.77%	23.88%	31.34%	55.22%
Lamar	3604000	Lamar Elementary	3604018		61.04%	16.88%	22.08%	38.96%
Lamar	3604000	Lamar High	3604019		56.16%	16.44%	27.40%	43.84%
Lamar	3604000	Lamar Middle	3604020		58.50%	15.65%	25.85%	41.50%
Lavaca	6605000	Lavaca Elementary	6605056		67.39%	18.48%	14.13%	32.61%
Lavaca	6605000	Lavaca High	6605057		66.67%	15.94%	17.39%	33.33%
Lavaca	6605000	Lavaca Middle	6605058	3.79%	59.85%	15.15%	21.21%	36.36%
Lawrence County	3810000	Black Rock Elementary	3810001		58.82%	20.59%	20.59%	41.18%
Lawrence County	3810000	Black Rock High	3810002		60.98%	17.07%	21.95%	39.02%
Lawrence County	3810000	Walnut Ridge Elementary	3810026		55.49%	23.12%	21.39%	44.51%
Lawrence County	3810000	Walnut Ridge High	3810027		54.00%	18.00%	28.00%	46.00%
Lead Hill	0506000	Lead Hill Elementary	0506031		69.45%	14.81%	15.74%	30.55%
Lead Hill	0506000	Lead Hill High	0506032		53.06%	22.45%	24.49%	46.94%
Lee County	3904000	Anna Strong Elementary	3904004		50.00%	21.62%	28.38%	50.00%
Lee County	3904000	Anna Strong Middle	3904006		45.58%	17.69%	36.73%	54.42%
Lee County	3904000	Lee High	3904008		42.67%	25.33%	32.00%	57.33%
Lee County	3904000	Whitten Elementary	3904005		54.14%	17.83%	28.03%	45.86%
Lincoln	7205000	Lincoln Elementary	7205031		70.13%	14.03%	15.84%	29.87%
Lincoln	7205000	Lincoln High	7205032		58.62%	20.69%	20.69%	41.38%
Lincoln	7205000	Lincoln Middle	7205033		60.74%	17.78%	21.48%	39.26%
Lisa Academy	6041700	Lisa Academy	6041702	3.31%	60.22%	20.99%	15.47%	36.46%
Lisa Academy	6041700	Lisa Academy High	6041703		68.75%	20.83%	10.42%	31.25%
Lisa Academy North	6048700	Lisa Academy North Middle	6048702		65.95%	15.68%	18.38%	34.06%
Little Rock	6001000	Bale Elementary	6001017		65.79%	16.32%	17.89%	34.21%
Little Rock	6001000	Baseline Elementary	6001052		60.00%	22.61%	17.39%	40.00%
Little Rock	6001000	Booker Arts Magnet Elementary	6001006	4.00%	67.33%	12.67%	16.00%	28.67%
Little Rock	6001000	Brady Elementary	6001018		56.56%	24.59%	18.85%	43.44%

District Name	District LEA	School Name	School LEA	Under Weight	Healthy Weight	Over-weight	Obese	Over-weight or Obese
Little Rock	6001000	Carver Magnet Elementary	6001021		61.42%	18.78%	19.80%	38.58%
Little Rock	6001000	Central High	6001001	2.01%	67.27%	13.05%	17.67%	30.72%
Little Rock	6001000	Chicot Primary	6001072		66.46%	18.94%	14.60%	33.54%
Little Rock	6001000	Cloverdale Middle	6001061	1.35%	49.66%	22.70%	26.29%	48.99%
Little Rock	6001000	David O'Dodd Elementary	6001055		63.57%	15.00%	21.43%	36.43%
Little Rock	6001000	Dunbar Magnet Middle	6001007		54.81%	21.15%	24.04%	45.19%
Little Rock	6001000	Felder Alternative Academy	6001703		47.06%	52.94%		52.94%
Little Rock	6001000	Forest Heights Middle	6001009	2.03%	56.98%	20.06%	20.93%	40.99%
Little Rock	6001000	Forest Park Elementary	6001024		71.20%	17.28%	11.52%	28.80%
Little Rock	6001000	Franklin Incentive Elementary	6001025		61.84%	17.56%	20.61%	38.17%
Little Rock	6001000	Fulbright Elementary	6001048	3.65%	72.19%	9.83%	14.33%	24.16%
Little Rock	6001000	Geyer Springs Elementary	6001056	4.20%	58.82%	18.49%	18.49%	36.98%
Little Rock	6001000	Gibbs Magnet Elementary	6001027		74.01%	17.32%	8.66%	25.98%
Little Rock	6001000	Hall High	6001002	1.70%	63.95%	17.69%	16.67%	34.36%
Little Rock	6001000	Henderson Middle	6001013	1.26%	57.68%	19.90%	21.16%	41.06%
Little Rock	6001000	J.A. Fair High	6001063		60.27%	15.23%	24.50%	39.73%
Little Rock	6001000	Jefferson Elementary	6001030		72.38%	15.71%	11.90%	27.61%
Little Rock	6001000	M.L. King Magnet Elementary	6001035		66.54%	16.35%	17.11%	33.46%
Little Rock	6001000	Mabelvale Elementary	6001057		48.85%	21.84%	29.31%	51.15%
Little Rock	6001000	Mabelvale Middle	6001062	1.57%	49.66%	20.22%	28.54%	48.76%
Little Rock	6001000	Mann Magnet Middle	6001003	2.10%	55.62%	18.29%	24.00%	42.29%
Little Rock	6001000	McClellan Magnet High	6001064		57.96%	13.07%	28.98%	42.05%
Little Rock	6001000	Mcdermott Elementary	6001020		68.50%	15.75%	15.75%	31.50%
Little Rock	6001000	Meadowcliff Elementary	6001033		59.42%	20.00%	20.59%	40.59%
Little Rock	6001000	Otter Creek Elementary	6001058		59.92%	22.18%	17.90%	40.08%
Little Rock	6001000	Parkview Magnet High	6001005	2.70%	61.71%	16.67%	18.92%	35.59%
Little Rock	6001000	Pulaski Heights Elementary	6001038	4.58%	65.36%	17.65%	12.42%	30.07%
Little Rock	6001000	Pulaski Heights Middle	6001010	2.62%	60.70%	18.12%	18.56%	36.68%
Little Rock	6001000	Rockefeller Incent. Elementary	6001050		58.54%	20.33%	21.14%	41.47%
Little Rock	6001000	Romine Interdist. Elementary	6001040		66.89%	14.29%	18.83%	33.12%
Little Rock	6001000	Stephens Elementary	6001041	2.91%	61.63%	13.95%	21.51%	35.46%
Little Rock	6001000	Terry Elementary	6001047	1.97%	64.59%	16.39%	17.05%	33.44%
Little Rock	6001000	W.D. Hamilton Learning Academy	6001070		63.16%	36.84%		36.84%
Little Rock	6001000	Wakefield Elementary	6001059		58.75%	19.58%	21.67%	41.25%
Little Rock	6001000	Washington Magnet Elementary	6001042	2.42%	57.97%	17.39%	22.22%	39.61%
Little Rock	6001000	Watson Intermediate	6001071		56.25%	24.22%	19.53%	43.75%
Little Rock	6001000	Western Hills Elementary	6001029		58.77%	21.93%	19.30%	41.23%
Little Rock	6001000	Williams Magnet Elementary	6001043	2.38%	60.48%	19.52%	17.62%	37.14%
Little Rock	6001000	Wilson Elementary	6001044		66.04%	12.26%	21.70%	33.96%
Little Rock	6001000	Woodruff Elementary	6001045		55.79%	23.16%	21.05%	44.21%

District Name	District LEA	School Name	School LEA	Under Weight	Healthy Weight	Over-weight	Obese	Over-weight or Obese
Lonoke	4301000	Lonoke Elementary	4301027		60.15%	17.29%	22.56%	39.85%
Lonoke	4301000	Lonoke High	4301029		58.66%	17.33%	24.00%	41.33%
Lonoke	4301000	Lonoke Middle	4301028	3.03%	59.09%	16.29%	21.59%	37.88%
Lonoke	4301000	Lonoke Primary	4301030		60.75%	16.94%	22.31%	39.25%
Magazine	4202000	J.D. Leftwich High	4202008		69.42%	14.05%	16.53%	30.58%
Magazine	4202000	Magazine Elementary	4202007		61.87%	18.71%	19.42%	38.13%
Magnet Cove	3003000	Magnet Cove Elementary	3003013	3.29%	66.45%	16.45%	13.82%	30.27%
Magnet Cove	3003000	Magnet Cove High	3003014		64.10%	16.67%	19.23%	35.90%
Magnolia	1402000	Central Elementary	1402006	1.89%	54.72%	20.49%	22.91%	43.40%
Magnolia	1402000	East-West Elementary	1402007		63.59%	16.81%	19.61%	36.42%
Magnolia	1402000	Magnolia High	1402009		64.38%	15.62%	20.00%	35.62%
Magnolia	1402000	Magnolia Junior High	1402008		57.79%	16.23%	25.97%	42.20%
Malvern	3004000	Malvern Elementary	3004021		52.71%	21.04%	26.25%	47.29%
Malvern	3004000	Malvern High	3004023		50.00%	22.92%	27.08%	50.00%
Malvern	3004000	Malvern Junior High	3004022		47.48%	17.99%	34.53%	52.52%
Malvern	3004000	Wilson Intermediate	3004025	3.65%	45.26%	18.25%	32.85%	51.10%
Mammoth Spring	2501000	Mammoth Spring Elementary	2501001		40.74%	18.52%	40.74%	59.26%
Mammoth Spring	2501000	Mammoth Spring High	2501002		50.00%	17.50%	32.50%	50.00%
Manila	4712000	Manila Elementary	4712043		63.55%	13.14%	23.31%	36.45%
Manila	4712000	Manila High	4712044		49.41%	23.53%	27.06%	50.59%
Manila	4712000	Manila Middle	4712045		46.98%	23.49%	29.53%	53.02%
Mansfield	6606000	Mansfield Elementary	6606060		64.43%	20.13%	15.44%	35.57%
Mansfield	6606000	Mansfield High	6606062		60.71%	21.43%	17.86%	39.29%
Mansfield	6606000	Mansfield Middle	6606061		64.76%	20.00%	15.24%	35.24%
Marion	1804000	Avondale Elementary	1804011		69.07%	17.99%	12.95%	30.94%
Marion	1804000	Marion Elementary	1804012		63.37%	18.32%	18.32%	36.64%
Marion	1804000	Marion High	1804015		61.85%	16.87%	21.29%	38.16%
Marion	1804000	Marion Intermediate	1804017		57.29%	19.71%	22.99%	42.70%
Marion	1804000	Marion Junior High	1804014		62.84%	17.01%	20.14%	37.15%
Marion	1804000	Marion Middle	1804016		49.64%	20.50%	29.86%	50.36%
Marked Tree	5604000	Marked Tree Elementary	5604015		45.95%	18.92%	35.14%	54.06%
Marked Tree	5604000	Marked Tree High	5604017		44.64%	26.79%	28.57%	55.36%
Marmaduke	2803000	Marmaduke Elementary	2803016		59.22%	18.44%	22.35%	40.79%
Marmaduke	2803000	Marmaduke High	2803017		58.59%	21.21%	20.20%	41.41%
Marvell	5404000	Lucilia Wood Elementary	5404006		56.76%	18.92%	24.32%	43.24%
Marvell	5404000	Marvell High	5404032		57.58%	11.11%	31.31%	42.42%
Marvell	5404000	Marvell Primary	5404030		57.65%	16.47%	25.88%	42.35%
Mayflower	2305000	Mayflower Elementary	2305025		67.71%	16.59%	15.70%	32.29%
Mayflower	2305000	Mayflower High	2305026		61.76%	16.18%	22.06%	38.24%
Mayflower	2305000	Mayflower Middle	2305027		50.34%	23.13%	26.53%	49.66%
Maynard	6102000	Maynard Elementary	6102005		71.56%	14.68%	13.76%	28.44%
Maynard	6102000	Maynard High	6102006		64.37%	14.94%	20.69%	35.63%
McCrory	7403000	McCrory Elementary	7403012		61.25%	16.25%	22.50%	38.75%
McCrory	7403000	McCrory High	7403013		57.58%	10.61%	31.82%	42.43%
McGehee	2105000	McGehee Elementary	2105026	1.74%	57.39%	19.71%	21.16%	40.87%
McGehee	2105000	McGehee High	2105028	5.00%	50.00%	16.88%	28.12%	45.00%

District Name	District LEA	School Name	School LEA	Under Weight	Healthy Weight	Over-weight	Obese	Over-weight or Obese
McGehee	2105000	McGehee High	2105028	5.00%	50.00%	16.88%	28.12%	45.00%
Melbourne	3302000	Melbourne Elementary	3302005		68.29%	20.33%	11.38%	31.71%
Melbourne	3302000	Melbourne High	3302006		48.00%	24.00%	28.00%	52.00%
Melbourne	3302000	Mount Pleasant Elementary	3302010		65.52%	20.69%	13.79%	34.48%
Mena	5703000	Holly Harshman Elementary	5703010		55.86%	21.38%	22.76%	44.14%
Mena	5703000	Louise Durham Elementary	5703009	3.82%	67.56%	14.12%	14.50%	28.62%
Mena	5703000	Mena High	5703012		65.89%	13.18%	20.93%	34.11%
Mena	5703000	Mena Middle	5703011		67.37%	20.00%	12.63%	32.63%
Mena	5703000	Mena Upper Elementary	5703013		55.17%	21.55%	23.28%	44.83%
Midland	3211000	Midland Elementary	3211022		62.67%	17.61%	19.72%	37.33%
Midland	3211000	Midland High	3211035		54.10%	16.39%	29.51%	45.90%
Mineral Springs	3104000	Mineral Springs Elementary	3104005	10.31%	51.55%	13.40%	24.74%	38.14%
Mineral Springs	3104000	Mineral Springs High	3104006		51.11%	28.89%	20.00%	48.89%
Mineral Springs	3104000	Saratoga Elementary	3104021		56.10%	14.63%	29.27%	43.90%
Monticello	2203000	Monticello Elementary	2203010	2.26%	54.89%	19.55%	23.31%	42.86%
Monticello	2203000	Monticello High	2203012		65.71%	20.00%	14.29%	34.29%
Monticello	2203000	Monticello Intermediate	2203014		47.91%	25.00%	27.08%	52.08%
Monticello	2203000	Monticello Middle	2203011	3.79%	58.62%	18.62%	18.97%	37.59%
Mount Ida	4902000	Mount Ida Elementary	4902006		62.31%	20.77%	16.92%	37.69%
Mount Ida	4902000	Mount Ida High	4902007		51.72%	18.97%	29.31%	48.28%
Mountain Home	0303000	Guy Berry Intermediate	0303016	1.89%	67.05%	17.80%	13.26%	31.06%
Mountain Home	0303000	Mountain Home Junior High	0303019	2.06%	58.42%	19.59%	19.93%	39.52%
Mountain Home	0303000	Mountain Home Kindergarten	0303018		73.38%	14.33%	12.29%	26.62%
Mountain Home	0303000	Mtn. Home High Career Academics	0303703		62.75%	17.35%	19.90%	37.25%
Mountain Home	0303000	Nelson Wilks Herron Elementary	0303013	2.21%	64.58%	17.34%	15.87%	33.21%
Mountain Home	0303000	Pinkston Middle	0303014	1.96%	51.37%	21.96%	24.71%	46.67%
Mountain Pine	2607000	Mountain Pine Elementary	2607046		62.66%	14.00%	23.33%	37.33%
Mountain Pine	2607000	Mountain Pine High	2607047		62.50%	17.50%	20.00%	37.50%
Mountain View	6901000	Mountain View Elementary	6901005	1.95%	62.21%	18.24%	17.59%	35.83%
Mountain View	6901000	Mountain View High	6901007		65.79%	18.42%	15.79%	34.21%
Mountain View	6901000	Mountain View Middle	6901006		57.46%	12.71%	29.83%	42.54%
Mountain View	6901000	Rural Special Elementary	6901011		58.62%	27.59%	13.79%	41.38%
Mountain View	6901000	Rural Special High	6901012		76.92%	23.07%	23.07%	23.07%
Mountain View	6901000	Timbo Elementary	6901015		65.58%	11.48%	22.95%	34.43%
Mountain View	6901000	Timbo High	6901016		64.86%	16.22%	18.92%	35.14%
Mountainburg	1703000	Mountainburg Elementary	1703012		70.89%	13.92%	15.19%	29.11%
Mountainburg	1703000	Mountainburg High	1703013		61.11%	16.67%	22.22%	38.89%
Mountainburg	1703000	Mountainburg Middle	1703022		65.15%	25.76%	9.09%	34.85%
Mt. Vernon-Enola	2306000	Mt. Vernon-Enola Elementary	2306029		63.79%	17.24%	18.97%	36.21%
Mt. Vernon-Enola	2306000	Mt. Vernon-Enola High	2306030		62.00%	14.00%	24.00%	38.00%
Mulberry	1704000	Marvin Primary	1704016		60.76%	18.99%	20.25%	39.24%
Mulberry	1704000	Millsap Intermediate	1704022		58.62%	41.38%	41.38%	41.38%
Mulberry	1704000	Mulberry High	1704017		76.19%	23.81%	23.81%	23.81%
Mulberry	1704000	Pleasant View Junior High	1704018		71.88%	28.12%	28.12%	28.12%

District Name	District LEA	School Name	School LEA	Under Weight	Healthy Weight	Over-weight	Obese	Over-weight or Obese
Murfreesboro	5504000	Murfreesboro Elementary	5504014		63.92%	18.99%	17.09%	36.08%
Murfreesboro	5504000	Murfreesboro High	5504015		71.23%	13.70%	15.07%	28.77%
N. Little Rock	6002000	Amboy Elementary	6002050		58.09%	20.59%	21.32%	41.91%
N. Little Rock	6002000	Belwood Elementary	6002053		48.61%	16.67%	34.72%	51.39%
N. Little Rock	6002000	Boone Park Elementary	6002054		66.66%	14.39%	18.94%	33.33%
N. Little Rock	6002000	Crestwood Elementary	6002055		70.73%	17.56%	11.71%	29.27%
N. Little Rock	6002000	Glenview Elementary	6002056		69.14%	14.81%	16.05%	30.86%
N. Little Rock	6002000	Indian Hills Elementary	6002057	4.28%	66.54%	17.12%	12.06%	29.18%
N. Little Rock	6002000	Lakewood Elementary	6002058	3.80%	64.67%	15.22%	16.30%	31.52%
N. Little Rock	6002000	Lakewood Middle	6002070		66.11%	14.43%	19.46%	33.89%
N. Little Rock	6002000	Lynch Drive Elementary	6002060	4.67%	60.75%	20.56%	14.02%	34.58%
N. Little Rock	6002000	Meadow Park Elementary	6002061		57.75%	19.72%	22.54%	42.26%
N. Little Rock	6002000	NLR High East Campus	6002075		63.02%	17.74%	19.25%	36.99%
N. Little Rock	6002000	N. Heights Elementary	6002063		64.74%	18.59%	16.67%	35.26%
N. Little Rock	6002000	Park Hill Elementary	6002064		59.02%	15.57%	25.41%	40.98%
N. Little Rock	6002000	Pike View Elementary	6002065		71.78%	12.88%	15.34%	28.22%
N. Little Rock	6002000	Poplar Street Middle	6002059	1.03%	62.06%	15.26%	21.65%	36.91%
N. Little Rock	6002000	Ridgeroad Charter Middle	6002702		56.43%	22.91%	20.67%	43.58%
N. Little Rock	6002000	Rose City Middle	6002077		52.46%	21.31%	26.23%	47.54%
N. Little Rock	6002000	Seventh Street Elementary	6002069		63.31%	17.27%	19.42%	36.69%
Nashville	3105000	Nashville Elementary	3105009	2.65%	54.87%	20.35%	22.12%	42.47%
Nashville	3105000	Nashville High	3105011		67.69%	15.38%	16.92%	32.30%
Nashville	3105000	Nashville Junior High	3105010		55.21%	14.58%	30.21%	44.79%
Nashville	3105000	Nashville Primary	3105012		65.81%	17.82%	16.36%	34.18%
Nemo Vista	1503000	Nemo Vista Elementary	1503016		69.70%	13.13%	17.17%	30.30%
Nemo Vista	1503000	Nemo Vista High	1503017		64.00%	36.00%		36.00%
Nemo Vista	1503000	Nemo Vista Middle	1503018		59.72%	18.06%	22.22%	40.28%
Nettleton	1611000	Fox Meadow Elementary	1611039	6.86%	68.63%	11.76%	12.75%	24.51%
Nettleton	1611000	Fox Meadow Intermediate Cntr.	1611045	3.09%	57.73%	18.56%	20.62%	39.18%
Nettleton	1611000	Nettleton Central Elementary	1611044		73.56%	10.34%	16.09%	26.43%
Nettleton	1611000	Nettleton High	1611042		63.83%	14.89%	21.28%	36.17%
Nettleton	1611000	Nettleton Intermediate Cntr.	1611043	5.67%	61.34%	15.98%	17.01%	32.99%
Nettleton	1611000	Nettleton Junior High	1611041		63.35%	14.91%	21.74%	36.65%
Nettleton	1611000	University Hts. Elementary	1611040		71.63%	16.31%	12.06%	28.37%
Nevada	5008000	Nevada Elementary	5008013		54.43%	20.25%	25.32%	45.57%
Newport	3403000	Castleberry Elementary	3403011	2.10%	59.66%	17.23%	21.01%	38.24%
Newport	3403000	Gibbs Albright Elementary	3403010	2.70%	47.75%	22.97%	26.58%	49.55%
Newport	3403000	Newport High	3403013		53.66%	17.07%	29.27%	46.34%
Newport	3403000	Newport Junior High	3403012		45.76%	22.88%	31.36%	54.24%

District Name	District LEA	School Name	School LEA	Under Weight	Healthy Weight	Over-weight	Obese	Over-weight or Obese
Norfolk	0304000	Norfolk Elementary	0304021		62.62%	16.82%	20.56%	37.38%
Norfolk	0304000	Norfolk High	0304022		55.93%	20.34%	23.73%	44.07%
Norphlet	7006000	Norphlet Elementary	7006035		54.69%	17.97%	27.34%	45.31%
Norphlet	7006000	Norphlet High	7006036		61.37%	15.91%	22.73%	38.64%
Omaha	0504000	Omaha Elementary	0504022		67.02%	19.15%	13.83%	32.98%
Omaha	0504000	Omaha High	0504023		79.54%		20.45%	20.45%
Osceola	4713000	Academic Center Of Excellence	4713702	4.22%	47.59%	17.47%	30.72%	48.19%
Osceola	4713000	East Elementary	4713047		61.37%	18.18%	20.45%	38.63%
Osceola	4713000	North Elementary	4713052		44.26%	23.77%	31.97%	55.74%
Osceola	4713000	Osceola High	4713051		47.27%	20.00%	32.73%	52.73%
Osceola	4713000	Osceola Middle	4713050		52.50%	20.00%	27.50%	47.50%
Osceola	4713000	West Elementary	4713048		66.67%	20.00%	13.33%	33.33%
Ouachita River	5706000	Acorn Elementary	5706001		65.69%	16.79%	17.52%	34.31%
Ouachita River	5706000	Acorn High	5706002		67.86%	17.86%	14.29%	32.15%
Ouachita River	5706000	Oden High	5706011		72.73%		27.27%	27.27%
Ouachita River	5706000	Oden Maddox Elementary	5706010		54.55%	13.64%	31.82%	45.46%
Ouachita	3005000	Ouachita Elementary	3005029		70.20%	13.25%	16.56%	29.81%
Ouachita	3005000	Ouachita High	3005030		74.07%	12.96%	12.96%	25.92%
Ozark Mountain	6505000	Bruno-Pyatt Elementary	6505012		66.04%		33.97%	33.97%
Ozark Mountain	6505000	Bruno-Pyatt High	6505011		62.50%	18.75%	18.75%	37.50%
Ozark Mountain	6505000	St. Joe Elementary	6505009		65.39%	13.46%	21.15%	34.61%
Ozark Mountain	6505000	Western Grove Elementary	6505013		66.66%	14.81%	18.52%	33.33%
Ozark Mountain	6505000	Western Grove High	6505014		72.22%		27.78%	27.78%
Ozark	2404000	Elgin B. Milton Elementary	2404015	2.84%	61.70%	16.31%	19.15%	35.46%
Ozark	2404000	Ozark High	2404017	4.24%	64.41%	13.56%	17.80%	31.36%
Ozark	2404000	Ozark Junior High	2404016		56.92%	18.46%	24.62%	43.08%
Ozark	2404000	Ozark Kindergarten	2404005	3.45%	60.00%	22.07%	14.48%	36.55%
Ozark	2404000	Ozark Middle	2404004		55.72%	19.29%	25.00%	44.29%
Palestine-Wheatley	6205000	Palestine-Wheatley Elementary	6205027		55.09%	19.49%	25.42%	44.91%
Palestine-Wheatley	6205000	Palestine-Wheatley Middle	6205031		50.00%	20.37%	29.63%	50.00%
Palestine-Wheatley	6205000	Palestine-Wheatley Senior High	6205028		48.22%	21.43%	30.36%	51.79%
Pangburn	7309000	Pangburn Elementary	7309038	3.47%	57.92%	20.30%	18.32%	38.62%
Pangburn	7309000	Pangburn High	7309039		55.17%	17.24%	27.59%	44.83%
Paragould	2808000	Baldwin Elementary	2808024	2.66%	58.17%	20.15%	19.01%	39.16%
Paragould	2808000	Oak Grove Elementary	2808041		56.11%	21.76%	22.14%	43.90%
Paragould	2808000	Oak Grove Middle	2808028		52.15%	16.13%	31.72%	47.85%
Paragould	2808000	Paragould High	2808043		56.12%	18.88%	25.00%	43.88%
Paragould	2808000	Paragould Junior High	2808042		56.58%	15.61%	27.80%	43.41%
Paragould	2808000	Woodrow Wilson Elementary	2808027		65.43%	13.83%	20.74%	34.57%
Paris	4203000	Paris Elementary	4203011	2.34%	60.16%	18.36%	19.14%	37.50%
Paris	4203000	Paris High	4203012		59.32%	13.56%	27.12%	40.68%
Paris	4203000	Paris Middle	4203013		59.89%	16.48%	23.63%	40.11%
Parkers Chapel	7007000	Parkers Chapel Elementary	7007039		62.50%	21.88%	15.62%	37.50%
Parkers Chapel	7007000	Parkers Chapel High	7007040		57.29%	28.12%	14.58%	42.70%
Pea Ridge	0407000	Pea Ridge Elementary	0407026	1.36%	63.86%	15.49%	19.29%	34.78%
Pea Ridge	0407000	Pea Ridge High	0407027		66.33%	12.24%	21.43%	33.67%

District Name	District LEA	School Name	School LEA	Under Weight	Healthy Weight	Over-weight	Obese	Over-weight or Obese
Pea Ridge	0407000	Pea Ridge Middle	0407028	1.98%	54.76%	17.86%	25.40%	43.26%
Perryville	5303000	Perryville Elementary	5303010		70.08%	10.68%	19.23%	29.91%
Perryville	5303000	Perryville High	5303011		72.73%	11.36%	15.91%	27.27%
Piggott	1104000	Piggott Elementary	1104017	2.53%	56.32%	13.72%	27.44%	41.16%
Piggott	1104000	Piggott High	1104018		51.18%	16.54%	32.28%	48.82%
Pine Bluff	3505000	Belair Middle	3505025		49.43%	21.59%	28.98%	50.57%
Pine Bluff	3505000	Broadmoor Elementary	3505026		65.08%	19.62%	15.31%	34.93%
Pine Bluff	3505000	Greenville Elementary	3505030		62.57%	16.20%	21.23%	37.43%
Pine Bluff	3505000	Jack Robey Junior High	3505044		62.36%	15.59%	22.05%	37.64%
Pine Bluff	3505000	Oak Park Elementary	3505034	2.65%	61.38%	18.52%	17.46%	35.98%
Pine Bluff	3505000	Pine Bluff High	3505042	1.91%	57.32%	18.15%	22.61%	40.76%
Pine Bluff	3505000	Southeast Middle	3505041		52.94%	17.06%	30.00%	47.06%
Pine Bluff	3505000	Southwood Elementary	3505037		61.62%	14.65%	23.74%	38.39%
Pine Bluff	3505000	Thirty-Fourth Ave. Elementary	3505036	2.75%	59.34%	15.38%	22.53%	37.91%
Pine Bluff	3505000	W. T. Cheney Elementary	3505046		60.84%	18.18%	20.98%	39.16%
Pocahontas	6103000	Alma Spikes Elementary	6103009	2.20%	62.11%	17.18%	18.50%	35.68%
Pocahontas	6103000	Pocahontas High	6103010		55.08%	20.34%	24.58%	44.92%
Pocahontas	6103000	Pocahontas Junior High	6103012	3.27%	45.10%	21.57%	30.07%	51.64%
Pocahontas	6103000	Pocahontas Upper Elementary	6103011	3.25%	50.54%	21.30%	24.91%	46.21%
Pottsville	5804000	Pottsville Elementary	5804013		54.55%	20.66%	24.79%	45.45%
Pottsville	5804000	Pottsville High	5804014		69.34%	18.67%	12.00%	30.67%
Pottsville	5804000	Pottsville Junior High	5804016		64.52%	17.74%	17.74%	35.48%
Pottsville	5804000	Pottsville Middle Grade	5804015		60.96%	23.11%	15.94%	39.05%
Poyen	2703000	Poyen Elementary	2703009	4.72%	66.14%	12.60%	16.54%	29.14%
Poyen	2703000	Poyen High	2703010		79.16%	20.83%		20.83%
Prairie Grove	7206000	Prairie Grove Elementary	7206035		75.66%	16.40%	7.94%	24.34%
Prairie Grove	7206000	Prairie Grove High	7206036		80.88%	8.82%	10.29%	19.11%
Prairie Grove	7206000	Prairie Grove Intermediate	7206039		69.73%	15.60%	14.68%	30.28%
Prairie Grove	7206000	Prairie Grove Middle	7206038	2.73%	66.67%	13.66%	16.94%	30.60%
Prescott	5006000	Mcrae Middle	5006023	3.79%	49.24%	25.00%	21.97%	46.97%
Prescott	5006000	Prescott Elementary	5006022		65.39%	19.23%	15.38%	34.61%
Prescott	5006000	Prescott High	5006024		70.00%	12.00%	18.00%	30.00%
Pulaski County Special	6003000	Arnold Drive Elementary	6003137	6.96%	76.52%	7.83%	8.70%	16.53%
Pulaski County Special	6003000	Baker Interdistrict Elementary	6003092	3.40%	69.90%	15.05%	11.65%	26.70%
Pulaski County Special	6003000	Bates Elementary	6003146	3.19%	61.17%	18.62%	17.02%	35.64%
Pulaski County Special	6003000	Bayou Meto Elementary	6003094		67.14%	15.00%	17.86%	32.86%
Pulaski County Special	6003000	Cato Elementary	6003129	4.35%	65.94%	15.22%	14.49%	29.71%
Pulaski County Special	6003000	Chenal Elementary	6003150		70.10%	14.43%	15.46%	29.89%
Pulaski County Special	6003000	Clinton Elementary	6003095	1.60%	62.18%	16.99%	19.23%	36.22%
Pulaski County Special	6003000	College Station Elementary	6003135		67.06%	17.65%	15.29%	32.94%
Pulaski County Special	6003000	Crystal Hill Elementary	6003093	1.79%	65.36%	18.57%	14.29%	32.86%

District Name	District LEA	School Name	School LEA	Under Weight	Healthy Weight	Over-weight	Obese	Over-weight or Obese
Pulaski County Special	6003000	Fuller Middle	6003120		63.13%	14.83%	22.03%	36.86%
Pulaski County Special	6003000	Harris Elementary	6003102		75.76%	24.25%		24.25%
Pulaski County Special	6003000	Jacksonville Elementary	6003103	4.33%	57.48%	13.39%	24.80%	38.19%
Pulaski County Special	6003000	Jacksonville High	6003123		54.55%	23.78%	21.68%	45.46%
Pulaski County Special	6003000	Jacksonville Middle Boys	6003118		60.00%	17.58%	22.42%	40.00%
Pulaski County Special	6003000	Jacksonville Middle Girls	6003116		53.64%	18.54%	27.81%	46.35%
Pulaski County Special	6003000	Joe T. Robinson Elementary	6003110		67.35%	16.33%	16.33%	32.66%
Pulaski County Special	6003000	Joe T. Robinson High	6003127		67.17%	16.42%	16.42%	32.84%
Pulaski County Special	6003000	Joe T. Robinson Middle	6003143		65.42%	13.08%	21.50%	34.58%
Pulaski County Special	6003000	Landmark Elementary	6003104		58.99%	20.14%	20.86%	41.00%
Pulaski County Special	6003000	Lawson Elementary	6003105		67.89%	17.43%	14.68%	32.11%
Pulaski County Special	6003000	Maumelle Middle	6003149	2.20%	66.30%	14.65%	16.85%	31.50%
Pulaski County Special	6003000	Murrell Taylor Elementary	6003141		63.82%	18.59%	17.59%	36.18%
Pulaski County Special	6003000	North Pulaski High	6003136		77.93%	11.69%	10.39%	22.08%
Pulaski County Special	6003000	Northwood Middle	6003140	3.09%	58.30%	20.46%	18.15%	38.61%
Pulaski County Special	6003000	Oak Grove Elementary	6003108		61.74%	18.26%	20.00%	38.26%
Pulaski County Special	6003000	Oak Grove High	6003126		58.54%	12.20%	29.27%	41.47%
Pulaski County Special	6003000	Oakbrooke Elementary	6003139		69.34%	14.15%	16.51%	30.66%
Pulaski County Special	6003000	Pine Forest Elementary	6003142	3.00%	66.52%	17.17%	13.30%	30.47%
Pulaski County Special	6003000	Pinewood Elementary	6003130		65.00%	13.33%	21.67%	35.00%
Pulaski	6003000	Scott Elementary	6003111		58.62%	41.38%		41.38%
	6003000	Sherwood Elementary	6003112		62.65%	17.47%	19.88%	37.35%
	6003000	Sylvan Hills Elementary	6003113		69.63%	15.18%	15.18%	30.36%
	6003000	Sylvan Hills High	6003128		79.21%	9.90%	10.89%	20.79%
	6003000	Sylvan Hills Middle	6003122	3.34%	55.02%	18.84%	22.80%	41.64%
	6003000	Tolleson Elementary	6003106		71.22%	16.67%	12.12%	28.79%
	6003000	Warren Dupree Elementary.	6003099		62.50%	17.65%	19.85%	37.50%
	6003000	Wilbur D. Mills High	6003125		53.54%	20.20%	26.26%	46.46%
Quitman	1203000	Quitman Elementary	1203010		60.96%	18.18%	20.86%	39.04%
Quitman	1203000	Quitman High	1203011		64.71%	12.94%	22.35%	35.29%
Rector	1106000	Rector Elementary	1106022		55.28%	17.39%	27.33%	44.72%
Rector	1106000	Rector High	1106023		48.57%	14.29%	37.14%	51.43%
Riverside	1613000	Riverside East Elementary	1613010		65.12%	23.26%	11.63%	34.89%
Riverside	1613000	Riverside Junior High	1613011		66.67%	33.33%		33.33%
Riverside	1613000	Riverside West Elementary	1613031		75.00%	9.21%	15.79%	25.00%
Riverview	7307000	Judsonia Elementary	7307026		68.25%	15.87%	15.87%	31.74%
Riverview	7307000	Kensett Elementary	7307030	3.26%	53.26%	21.20%	22.28%	43.48%
Riverview	7307000	Riverview High	7307032		57.89%	14.47%	27.63%	42.10%
Riverview	7307000	Riverview Junior High	7307033		63.34%	20.00%	16.67%	36.67%

District Name	District LEA	School Name	School LEA	Under Weight	Healthy Weight	Over-weight	Obese	Over-weight or Obese
Rogers	0405000	Bellview Elementary	0405047		73.90%	17.27%	8.84%	26.11%
Rogers	0405000	Bonnie Grimes Elementary	0405041		60.25%	17.95%	21.79%	39.74%
Rogers	0405000	Eastside Elementary	0405031		63.55%	11.82%	24.63%	36.45%
Rogers	0405000	Elmwood Middle	0405037	2.15%	51.55%	16.47%	29.83%	46.30%
Rogers	0405000	Elza R. Tucker Elementary	0405050		69.50%	14.50%	16.00%	30.50%
Rogers	0405000	Frank Tillery Elementary	0405043	6.00%	65.00%	10.50%	18.50%	29.00%
Rogers	0405000	Garfield Elementary	0405032		53.33%	28.89%	17.78%	46.67%
Rogers	0405000	Grace Hill Elementary	0405040		64.29%	11.31%	24.40%	35.71%
Rogers	0405000	Joe Mathias Elementary	0405044	4.04%	59.60%	15.15%	21.21%	36.36%
Rogers	0405000	Jones Elementary	0405049		56.13%	18.06%	25.81%	43.87%
Rogers	0405000	Kirksey Middle	0405045	2.33%	58.99%	20.51%	18.18%	38.69%
Rogers	0405000	Lingle Middle	0405046	3.39%	57.79%	18.74%	20.09%	38.83%
Rogers	0405000	Lowell Elementary	0405033		54.63%	20.00%	25.37%	45.37%
Rogers	0405000	Northside Elementary	0405034	4.89%	63.59%	16.30%	15.22%	31.52%
Rogers	0405000	Oakdale Middle	0405039	2.00%	52.12%	20.45%	25.44%	45.89%
Rogers	0405000	Old Wire Elementary	0405051		54.61%	21.99%	23.40%	45.39%
Rogers	0405000	Reagan Elementary	0405042		63.83%	21.81%	14.36%	36.17%
Rogers	0405000	Rogers Heritage High	0405052	1.64%	65.19%	15.89%	17.29%	33.18%
Rogers	0405000	Rogers High	0405048	2.22%	60.13%	20.89%	16.77%	37.66%
Rogers	0405000	Westside Elementary	0405036	3.76%	60.75%	17.20%	18.28%	35.48%
Rose Bud	7310000	Rose Bud Elementary	7310042		57.14%	23.15%	19.70%	42.85%
Rose Bud	7310000	Rose Bud High	7310043		65.62%	17.71%	16.67%	34.38%
Russellville	5805000	Center Valley Elementary	5805025		63.23%	19.35%	17.42%	36.77%
Russellville	5805000	Crawford Elementary	5805017		66.34%	17.07%	16.59%	33.66%
Russellville	5805000	Dwight Elementary	5805018		61.47%	23.85%	14.68%	38.53%
Russellville	5805000	London Elementary	5805019		60.81%	17.57%	21.62%	39.19%
Russellville	5805000	Oakland Heights Elementary	5805020		56.95%	20.83%	22.22%	43.05%
Russellville	5805000	Russellville High	5805024	2.19%	57.30%	16.42%	24.09%	40.51%
Russellville	5805000	Russellville Junior High	5805023		55.47%	16.61%	27.92%	44.53%
Russellville	5805000	Russellville Middle	5805022		57.30%	19.19%	23.51%	42.70%
Russellville	5805000	Sequoyah Elementary	5805021	1.95%	61.33%	17.19%	19.53%	36.72%
Salem	2502000	Salem Elementary	2502005		58.62%	18.72%	22.66%	41.38%
Salem	2502000	Salem High	2502006		56.52%	26.09%	17.39%	43.48%
Scranton	4204000	Scranton Elementary	4204016		64.56%	15.75%	19.69%	35.44%
Scranton	4204000	Scranton High	4204019		66.66%	12.96%	20.37%	33.33%
Searcy County	6502000	Leslie Elementary	6502001		60.00%	20.00%	20.00%	40.00%
Searcy County	6502000	Marshall Elementary	6502005		51.11%	22.22%	26.67%	48.89%
Searcy County	6502000	Marshall High	6502006		52.99%	17.95%	29.06%	47.01%
Searcy	7311000	AHLF Junior High	7311051		50.37%	21.85%	27.78%	49.63%
Searcy	7311000	Mcrae Elementary	7311047		68.70%	16.03%	15.27%	31.30%
Searcy	7311000	Searcy High	7311052	4.27%	66.67%	11.97%	17.09%	29.06%
Searcy	7311000	Sidney Deener Elementary	7311046	2.79%	65.58%	14.88%	16.74%	31.62%
Searcy	7311000	Southwest Middle	7311050	2.69%	60.22%	17.20%	19.89%	37.09%

District Name	District LEA	School Name	School LEA	Under Weight	Healthy Weight	Over-weight	Obese	Over-weight or Obese
Searcy	7311000	Westside Elementary	7311053	4.42%	67.01%	13.27%	15.31%	28.58%
Sheridan	2705000	East End Elementary	2705018		67.68%	18.34%	13.97%	32.31%
Sheridan	2705000	East End Intermediate	2705024	4.98%	56.85%	20.75%	17.43%	38.18%
Sheridan	2705000	Sheridan Elementary	2705019	3.33%	68.33%	13.00%	15.33%	28.33%
Sheridan	2705000	Sheridan High	2705021		67.23%	17.23%	15.55%	32.78%
Sheridan	2705000	Sheridan Intermediate	2705023		55.21%	19.63%	25.15%	44.78%
Sheridan	2705000	Sheridan Middle	2705020	1.10%	61.18%	17.54%	20.18%	37.72%
Shirley	7104000	Shirley Elementary	7104014		65.94%	16.48%	17.58%	34.06%
Shirley	7104000	Shirley High	7104015		71.05%		28.95%	28.95%
Siloam Springs	0406000	Delbert "Pete"& Pat Allen Elementary	0406048		65.86%	17.59%	16.55%	34.14%
Siloam Springs	0406000	Northside Elementary	0406046	1.96%	68.24%	13.33%	16.47%	29.80%
Siloam Springs	0406000	Siloam Springs High	0406050		66.10%	18.22%	15.68%	33.90%
Siloam Springs	0406000	Siloam Springs Middle	0406049	2.14%	56.70%	20.58%	20.58%	41.16%
Siloam Springs	0406000	Southside Elementary	0406047	3.62%	60.14%	16.30%	19.93%	36.23%
Sloan-Hendrix	3806000	Sloan-Hendrix Elementary	3806018		58.00%	19.00%	23.00%	42.00%
Sloan-Hendrix	3806000	Sloan-Hendrix High	3806019		54.55%	19.48%	25.97%	45.45%
Sloan-Hendrix	3806000	Sloan-Hendrix Middle	3806020		44.74%	23.68%	31.58%	55.26%
Smackover	7008000	Smackover Elementary	7008043	2.29%	56.42%	20.64%	20.64%	41.28%
Smackover	7008000	Smackover High	7008045	7.37%	55.79%	21.05%	15.79%	36.84%
S. Conway County	1507000	Morrilton Elementary	1507029		45.45%	23.30%	31.25%	54.55%
S. Conway County	1507000	Morrilton Intermediate	1507031		53.30%	18.94%	27.75%	46.69%
S. Conway County	1507000	Morrilton Junior High	1507037		50.91%	17.27%	31.82%	49.09%
S. Conway County	1507000	Morrilton Primary	1507032		49.38%	19.38%	31.25%	50.63%
S. Conway County	1507000	Morrilton Senior High	1507036		53.33%	20.00%	26.67%	46.67%
S. Mississippi County	4706000	Rivercrest High	4706066		57.78%	13.33%	28.89%	42.22%
S. Mississippi County	4706000	Rivercrest Junior High	4706068		57.75%	7.04%	35.21%	42.25%
S. Mississippi County	4706000	S. Mississippi County Elementary at Keiser	4706059		63.33%	20.00%	16.67%	36.67%
S. Mississippi County	4706000	S. Mississippi County Elementary at Luxora	4706039		62.96%	12.35%	24.69%	37.04%
S. Mississippi County	4706000	S. Mississippi-County Elementary at Wilson	4706040		52.74%	18.41%	28.86%	47.27%
South Side	7105000	South Side Elementary	7105018		65.81%	17.42%	16.77%	34.19%
South Side	7105000	South Side High	7105019		73.47%		26.53%	26.53%
Southside	3209000	Southside Elementary	3209038		66.67%	17.92%	15.42%	33.34%
Southside	3209000	Southside High	3209039		55.07%	17.39%	27.54%	44.93%
Southside	3209000	Southside Middle	3209041	4.74%	57.37%	18.42%	19.47%	37.89%

District Name	District LEA	School Name	School LEA	Under Weight	Healthy Weight	Over-weight	Obese	Over-weight or Obese
Spring Hill	2906000	Spring Hill Elementary	2906025		57.14%	19.84%	23.02%	42.86%
Spring Hill	2906000	Spring Hill High	2906026		58.33%	18.33%	23.33%	41.66%
Springdale	7207000	Bayyari Elementary	7207059	2.48%	56.61%	18.60%	22.31%	40.91%
Springdale	7207000	Bernice Young Elementary	7207057	3.33%	62.92%	20.83%	12.92%	33.75%
Springdale	7207000	Central Junior High	7207047	1.27%	66.75%	14.72%	17.26%	31.98%
Springdale	7207000	Elmdale Elementary	7207040		53.98%	16.61%	29.41%	46.02%
Springdale	7207000	George Elementary	7207053		64.81%	16.03%	19.16%	35.19%
Springdale	7207000	George Junior High	7207060	2.64%	58.42%	18.81%	20.13%	38.94%
Springdale	7207000	Har-Ber High	7207062		71.82%	11.34%	16.84%	28.18%
Springdale	7207000	Harp Elementary	7207058	1.70%	57.48%	17.35%	23.47%	40.82%
Springdale	7207000	Helen Tyson Middle	7207055	2.32%	55.22%	17.63%	24.83%	42.46%
Springdale	7207000	Hellstern Middle	7207061	3.43%	58.05%	16.62%	21.90%	38.52%
Springdale	7207000	Hunt Elementary	7207063		69.39%	18.97%	11.64%	30.61%
Springdale	7207000	J. O. Kelly Middle	7207054	2.18%	52.91%	20.87%	24.03%	44.90%
Springdale	7207000	John Tyson Elementary	7207044	2.81%	61.85%	14.86%	20.48%	35.34%
Springdale	7207000	Jones Elementary	7207041		55.04%	14.22%	30.73%	44.95%
Springdale	7207000	Monitor Elementary	7207065	2.76%	64.83%	14.14%	18.28%	32.42%
Springdale	7207000	Parson Hills Elementary	7207050		63.89%	19.84%	16.27%	36.11%
Springdale	7207000	Robert E. Lee Elementary	7207042		53.61%	23.20%	23.20%	46.40%
Springdale	7207000	Southwest Junior High	7207048	2.05%	54.09%	22.81%	21.05%	43.86%
Springdale	7207000	Springdale Alternative	7207067		61.54%	38.46%		38.46%
Springdale	7207000	Springdale High	7207049		66.03%	16.99%	16.99%	33.98%
Springdale	7207000	Thurman G. Smith Elementary	7207051		63.75%	18.43%	17.82%	36.25%
Springdale	7207000	Turnbow Elementary	7207064		64.17%	18.24%	17.59%	35.83%
Springdale	7207000	Walker Elementary	7207052	2.35%	63.14%	17.65%	16.86%	34.51%
Springdale	7207000	Westwood Elementary	7207046		59.27%	22.17%	18.55%	40.72%
Springdale	7207000	Willis Shaw Elementary	7207066		72.60%	14.61%	12.79%	27.40%
Star City	4003000	Brown Elementary	4003014	3.08%	54.62%	15.90%	26.41%	42.31%
Star City	4003000	Star City High	4003016		56.56%	18.85%	24.59%	43.44%
Star City	4003000	Star City Middle	4003015		52.83%	20.16%	27.02%	47.18%
Stephens	5206000	Stephens Elementary	5206032	4.55%	53.64%	15.45%	26.36%	41.81%
Stephens	5206000	Stephens High	5206033		57.69%	15.38%	26.92%	42.30%
Strong-Huttig	7009000	Gardner-Strong Elementary	7009048		52.73%	20.00%	27.27%	47.27%
Strong-Huttig	7009000	Strong High	7009049		71.79%	28.20%		28.20%
Strong-Huttig	7009000	Strong-Huttig Middle	7009025		43.48%	13.04%	43.48%	56.52%
Stuttgart	0104000	Meekins Middle	0104023		55.47%	20.31%	24.22%	44.53%
Stuttgart	0104000	Park Avenue Elementary	0104021	2.12%	55.44%	18.30%	24.14%	42.44%
Stuttgart	0104000	Stuttgart High	0104025		59.02%	20.49%	20.49%	40.98%
Stuttgart	0104000	Stuttgart Junior High	0104026		58.97%	13.46%	27.56%	41.02%
Texarkana	4605000	Arkansas High	4605026		61.81%	15.58%	22.61%	38.19%
Texarkana	4605000	College Hill Elementary	4605019		60.52%	17.89%	21.58%	39.47%
Texarkana	4605000	College Hill Middle	4605024	2.68%	54.85%	21.74%	20.74%	42.48%
Texarkana	4605000	Edward D. Trice Elementary	4605027	1.95%	59.74%	13.64%	24.68%	38.32%
Texarkana	4605000	Fairview Elementary	4605020		58.92%	13.18%	27.91%	41.09%

District Name	District LEA	School Name	School LEA	Under Weight	Healthy Weight	Over-weight	Obese	Over-weight or Obese
Texarkana	4605000	North Heights Junior High	4605025	1.89%	56.06%	18.56%	23.48%	42.04%
Texarkana	4605000	Union Elementary	4605022		53.66%	18.70%	27.64%	46.34%
Texarkana	4605000	Vera Kilpatrick Elementary	4605021		62.11%	17.18%	20.70%	37.88%
Trumann	5605000	Cedar Park Elementary	5605021	2.67%	63.37%	14.44%	19.52%	33.96%
Trumann	5605000	Central Elementary	5605001	7.50%	53.75%	18.75%	20.00%	38.75%
Trumann	5605000	Trumann High	5605023	4.15%	49.31%	17.97%	28.57%	46.54%
Twin Rivers	6806000	Oak Ridge Central Elementary	6806013		55.81%	23.26%	20.93%	44.19%
Twin Rivers	6806000	Oak Ridge Central High	6806014		71.43%		28.58%	28.58%
Twin Rivers	6806000	Williford Elementary	6806018		38.30%	29.79%	31.91%	61.70%
Twin Rivers	6806000	Williford High	6806019		51.52%	18.18%	30.30%	48.48%
Two Rivers	7510000	Fourche Valley Elementary	7510016		54.55%		45.45%	45.45%
Two Rivers	7510000	Fourche Valley High	7510017		68.75%		31.25%	31.25%
Two Rivers	7510000	Ola Elementary	7510024	6.25%	61.11%	11.81%	20.83%	32.64%
Two Rivers	7510000	Ola High	7510025		63.64%	12.73%	23.64%	36.37%
Two Rivers	7510000	Plainview-Rover Elementary	7510028		76.27%	8.47%	15.25%	23.72%
Valley Springs	0505000	Valley Springs Elementary	0505026	3.54%	70.35%	11.50%	14.60%	26.10%
Valley Springs	0505000	Valley Springs High	0505027		77.50%		22.50%	22.50%
Valley Springs	0505000	Valley Springs Middle	0505028		65.67%	16.42%	17.91%	34.33%
Valley View	1612000	Valley View Elementary	1612047	3.65%	66.08%	13.01%	17.25%	30.26%
Valley View	1612000	Valley View High	1612048	2.01%	65.06%	17.27%	15.66%	32.93%
Van Buren	1705000	Butterfield Junior High	1705026	3.25%	57.14%	22.08%	17.53%	39.61%
Van Buren	1705000	Central Middle	1705028	3.83%	56.83%	14.75%	24.59%	39.34%
Van Buren	1705000	City Heights Elementary	1705020		71.94%	13.67%	14.39%	28.06%
Van Buren	1705000	Coleman Junior High	1705031		67.59%	15.86%	16.55%	32.41%
Van Buren	1705000	J. J. Izard Elementary	1705025		57.45%	15.96%	26.60%	42.56%
Van Buren	1705000	James R. Tate Elementary	1705029	2.86%	66.86%	9.71%	20.57%	30.28%
Van Buren	1705000	King Elementary	1705022		71.43%	15.08%	13.49%	28.57%
Van Buren	1705000	Northridge Middle	1705033		63.13%	16.76%	20.11%	36.87%
Van Buren	1705000	Parkview Elementary	1705030		75.64%	14.72%	9.64%	24.36%
Van Buren	1705000	Rena Elementary	1705032		65.43%	17.28%	17.28%	34.56%
Van Buren	1705000	Van Buren High	1705027		66.36%	15.00%	18.64%	33.64%
Van Cove	5704000	Van Cove Elementary	5704019		62.62%	14.02%	23.36%	37.38%
Van Cove	5704000	Van Cove High	5704018		65.52%	18.97%	15.52%	34.49%
Vilonia	2307000	Academy of Service & Tech.	2307702		54.55%	14.55%	30.91%	45.46%
Vilonia	2307000	Academy Of Technology	2307701		68.00%	16.00%	16.00%	32.00%
Vilonia	2307000	Vilonia Elementary	2307033	2.37%	69.53%	12.43%	15.68%	28.11%
Vilonia	2307000	Vilonia High	2307034		77.98%	13.76%	8.26%	22.02%
Vilonia	2307000	Vilonia Junior High	2307036		64.58%	14.58%	20.83%	35.41%
Vilonia	2307000	Vilonia Middle	2307037		58.33%	24.40%	17.26%	41.66%
Vilonia	2307000	Vilonia Primary	2307035		71.64%	16.42%	11.94%	28.36%
Viola	2503000	Viola Elementary	2503009		65.05%	16.50%	18.45%	34.95%
Viola	2503000	Viola High	2503010		54.24%	15.25%	30.51%	45.76%
Waldron	6401000	Waldron Elementary	6401001	1.86%	62.45%	21.19%	14.50%	35.69%
Waldron	6401000	Waldron High	6401003		63.96%	17.12%	18.92%	36.04%

District Name	District LEA	School Name	School LEA	Under Weight	Healthy Weight	Over-weight	Obese	Over-weight or Obese
Waldron	6401000	Waldron Middle	6401004		56.72%	18.07%	25.21%	43.28%
Warren	0602000	Eastside Primary	0602012		53.25%	17.75%	29.00%	46.75%
Warren	0602000	Thomas C. Brunson Elementary	0602013		62.39%	18.80%	18.80%	37.60%
Warren	0602000	Warren High	0602014		45.28%	17.92%	36.79%	54.71%
Warren	0602000	Warren Middle	0602015		50.76%	22.84%	26.40%	49.24%
Watson Chapel	3509000	Coleman Elementary	3509066	1.60%	56.29%	17.85%	24.26%	42.11%
Watson Chapel	3509000	Edgewood Elementary	3509063		69.95%	13.15%	16.90%	30.05%
Watson Chapel	3509000	L. L. Owen Elementary	3509064		66.67%	15.53%	17.80%	33.33%
Watson Chapel	3509000	Watson Chapel High	3509067		58.00%	14.95%	27.05%	42.00%
Watson Chapel	3509000	Watson Chapel Junior High	3509068		61.28%	13.62%	25.11%	38.73%
Weiner	5607000	Weiner Elementary	5607031		57.89%	18.95%	23.16%	42.11%
Weiner	5607000	Weiner High	5607032		59.26%	22.22%	18.52%	40.74%
West Fork	7208000	West Fork Elementary	7208060		68.98%	17.59%	13.43%	31.02%
West Fork	7208000	West Fork High	7208062		58.33%	18.75%	22.92%	41.67%
West Fork	7208000	West Fork Middle	7208061		64.51%	16.13%	19.35%	35.48%
West Memphis	1803000	Bragg Elementary	1803025		59.18%	17.35%	23.47%	40.82%
West Memphis	1803000	East Junior High	1803033		61.06%	9.73%	29.20%	38.93%
West Memphis	1803000	Faulk Elementary	1803026	2.06%	59.67%	11.93%	26.34%	38.27%
West Memphis	1803000	Jackson Elementary	1803027	2.16%	64.07%	21.21%	12.55%	33.76%
West Memphis	1803000	Maddux Elementary	1803028	2.70%	55.60%	17.37%	24.32%	41.69%
West Memphis	1803000	Richland Elementary	1803029		57.97%	20.34%	21.69%	42.03%
West Memphis	1803000	Weaver Elementary	1803030		63.23%	16.13%	20.65%	36.78%
West Memphis	1803000	Wedlock Elementary	1803031		36.07%	22.95%	40.98%	63.93%
West Memphis	1803000	West Junior High	1803034		61.42%	17.14%	21.43%	38.57%
West Memphis	1803000	West Memphis High	1803036		52.56%	16.67%	30.77%	47.44%
West Memphis	1803000	Wonder Elementary	1803032		60.64%	15.66%	23.69%	39.35%
West Memphis	1803000	Wonder Junior High	1803035		55.97%	14.18%	29.85%	44.03%
West Side	1204000	West Side Elementary	1204014		66.98%	19.81%	13.21%	33.02%
West Side	1204000	West Side High	1204015		76.92%		23.08%	23.08%
Western Yell County	7509000	Western Yell County Elementary	7509030		61.95%	17.39%	20.65%	38.04%
Western Yell County	7509000	Western Yell County High	7509033		66.04%	15.09%	18.87%	33.96%
Westside Consolidated	1602000	Westside Elementary	1602056	4.85%	60.91%	19.39%	14.85%	34.24%
Westside Consolidated	1602000	Westside High	1602055	2.89%	56.20%	18.18%	22.73%	40.91%
Westside Consolidated	1602000	Westside Middle	1602058		55.32%	19.15%	25.53%	44.68%
Westside	3606000	Westside Elementary	3606025	3.87%	51.93%	17.68%	26.52%	44.20%
Westside	3606000	Westside High	3606026		55.17%	20.69%	24.14%	44.83%
White County Central	7304000	White Co. Central Elementary	7304018		67.93%	13.21%	18.87%	32.08%
White County Central	7304000	White Co. Central High	7304019		46.55%	31.03%	22.41%	53.44%
White Hall	3510000	Gandy Elementary	3510084		63.64%	19.70%	16.67%	36.37%
White Hall	3510000	Hardin Elementary	3510078		58.59%	19.11%	22.29%	41.40%
White Hall	3510000	Moody Elementary	3510079	2.30%	52.07%	19.82%	25.81%	45.63%

District Name	District LEA	School Name	School LEA	Under Weight	Healthy Weight	Over-weight	Obese	Over-weight or Obese
White Hall	3510000	Redfield Junior High	3510077		68.97%		31.03%	31.03%
White Hall	3510000	Taylor Elementary	3510080		57.64%	19.61%	22.75%	42.36%
White Hall	3510000	White Hall High	3510076		56.71%	16.45%	26.84%	43.29%
White Hall	3510000	White Hall Junior High	3510081		60.65%	20.83%	18.52%	39.35%
Wickes	5705000	Umpire Elementary	5705016		75.61%	12.20%	12.20%	24.40%
Wickes	5705000	Wickes Elementary	5705021		65.34%	18.75%	15.91%	34.66%
Wickes	5705000	Wickes High	5705022		63.30%	17.72%	18.99%	36.71%
Wonderview	1505000	Wonderview Elementary	1505025		70.34%	9.32%	20.34%	29.66%
Wonderview	1505000	Wonderview High	1505026		46.38%	26.09%	27.54%	53.63%
Woodlawn	1304000	Woodlawn Elementary	1304014	6.71%	70.47%	12.08%	10.74%	22.82%
Woodlawn	1304000	Woodlawn High	1304015		68.06%	12.50%	19.44%	31.94%
Wynne	1905000	Wynne High	1905017		54.95%	16.48%	28.57%	45.05%
Wynne	1905000	Wynne Intermediate	1905015		58.44%	16.44%	25.11%	41.55%
Wynne	1905000	Wynne Junior High	1905016	2.25%	55.73%	15.06%	26.97%	42.03%
Wynne	1905000	Wynne Primary	1905014	2.82%	61.65%	18.12%	17.41%	35.53%
Yellville-Summit	4502000	Yellville-Summit Elementary	4502005		67.70%	14.91%	17.39%	32.30%
Yellville-Summit	4502000	Yellville-Summit High	4502006		55.22%	23.88%	20.90%	44.78%
Yellville-Summit	4502000	Yellville-Summit Middle	4502004		56.35%	17.46%	26.19%	43.65%